

IHC*easy* PRPF19 Ready-To-Use IHC Kit

Catalog Number: **KHC2000**

General Information

Sample type:
FFPE tissue
Cited sample type:
Reactivity:
Human, Mouse, Rat
Cited Reactivity:

Assay type:
Immunohistochemistry
Primary antibody type:
Rabbit Polyclonal
Secondary antibody type:
Polymer-HRP-Goat anti-Rabbit

Kit Component

Component	Size	Concentration
Antigen Retrieval Buffer	100 mL	50×
Washing Buffer	100 mL ×2	20×
Blocking Buffer	5 mL	RTU
Primary Antibody	5 mL	RTU
Secondary Antibody	5 mL	RTU
Chromogen Component A	0.2 mL	RTU
Chromogen Component B	4 mL	RTU
Signal Enhancer	5 mL	RTU
Counter Staining Reagent	5 mL	RTU
Mounting Media	5 mL	RTU
Control Slide	1 slide (Optional)	FFPE
Datasheet	1 Copy	
Manual	1 Copy	

Storage Instructions

All the reagents are stored at 2-8°C. The kit is stable for 6 months from the date of receipt.

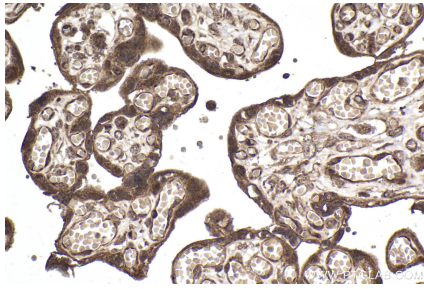
Background

PRPF19 is involved in several processes, including DNA damage checkpoint signaling; cellular protein metabolic process; and mRNA splicing, via spliceosome.

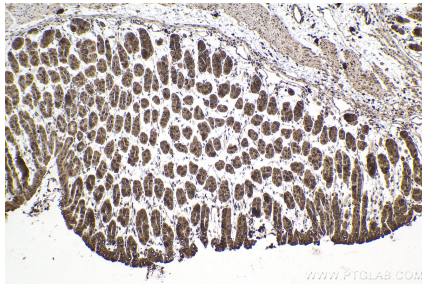
Synonyms

hPSO4, Nuclear matrix protein 200, Pre mRNA processing factor 19, PRP19, PRP19/PSO4 homolog, PRPF19, PSO4, Senescence evasion factor, SNEV, UBOX4

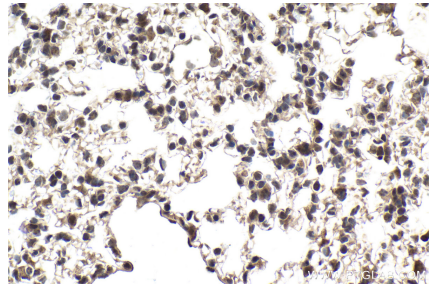
Selected Validation Data



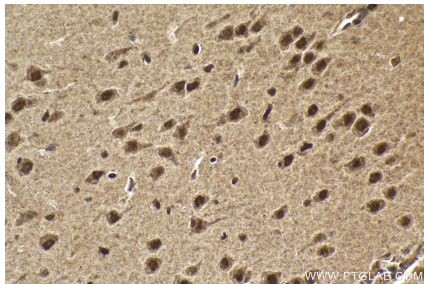
Immunohistochemical analysis of paraffin-embedded human placenta tissue slide using KHC2000 (PRPF19 IHC Kit).



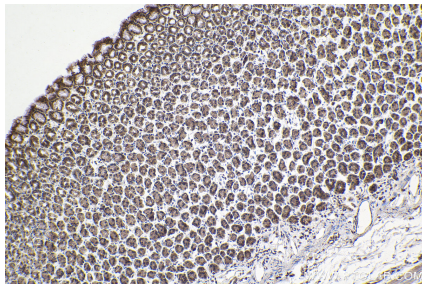
Immunohistochemical analysis of paraffin-embedded mouse stomach tissue slide using KHC2000 (PRPF19 IHC Kit).



Immunohistochemical analysis of paraffin-embedded mouse lung tissue slide using KHC2000 (PRPF19 IHC Kit).



Immunohistochemical analysis of paraffin-embedded mouse brain tissue slide using KHC2000 (PRPF19 IHC Kit).



Immunohistochemical analysis of paraffin-embedded rat stomach tissue slide using KHC2000 (PRPF19 IHC Kit).