

# IHC*easy* MAFF Ready-To-Use IHC Kit

Catalog Number: **KHC1999**

## General Information

Sample type:  
FFPE tissue  
Cited sample type:  
Reactivity:  
Human, Mouse, Rat  
Cited Reactivity:

Assay type:  
Immunohistochemistry  
Primary antibody type:  
Rabbit Polyclonal  
Secondary antibody type:  
Polymer-HRP-Goat anti-Rabbit

## Kit Component

Component	Size	Concentration
Antigen Retrieval Buffer	100 mL	50×
Washing Buffer	100 mL ×2	20×
Blocking Buffer	5 mL	RTU
Primary Antibody	5 mL	RTU
Secondary Antibody	5 mL	RTU
Chromogen Component A	0.2 mL	RTU
Chromogen Component B	4 mL	RTU
Signal Enhancer	5 mL	RTU
Counter Staining Reagent	5 mL	RTU
Mounting Media	5 mL	RTU
Control Slide	1 slide (Optional)	FFPE
Datasheet	1 Copy	
Manual	1 Copy	

## Storage Instructions

All the reagents are stored at 2-8°C. The kit is stable for 6 months from the date of receipt.

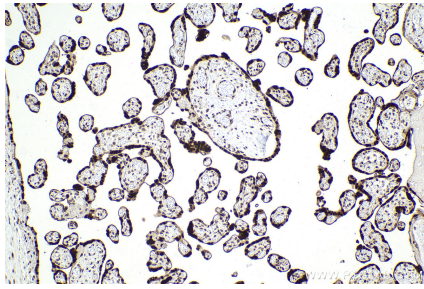
## Background

MAFF encodes a basic region and leucine zipper (bZIP)-type transcription factor protein. MAFF interacts with the upstream promoter region of oxytocin receptor (OXTR) and plays a role in OXTR upregulation. Mice lacking MAFF, MAFK and MAFK are embryonic lethal. MAFF has a higher expression in adipose, colon, lung, prostate and skeletal muscle tissues.

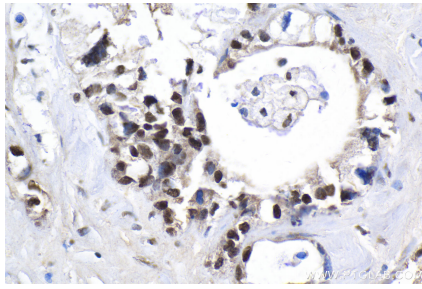
## Synonyms

V-maf musculoaponeurotic fibrosarcoma oncogene homolog F, U-Maf, U MAF

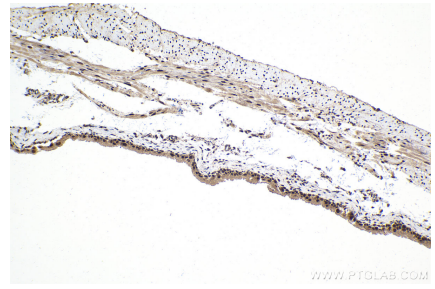
## Selected Validation Data



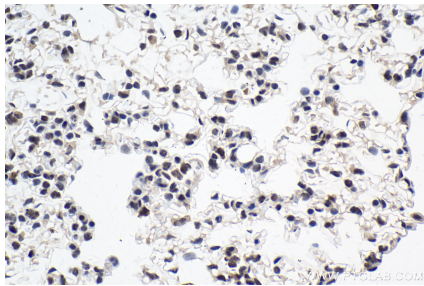
Immunohistochemical analysis of paraffin-embedded human placenta tissue slide using KHC1999 (MAFF IHC Kit).



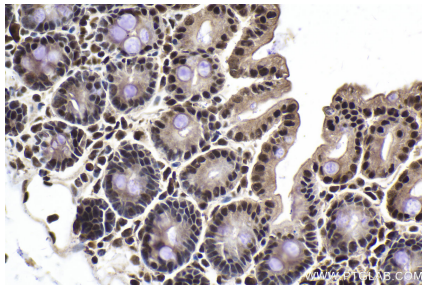
Immunohistochemical analysis of paraffin-embedded human pancreas cancer tissue slide using KHC1999 (MAFF IHC Kit).



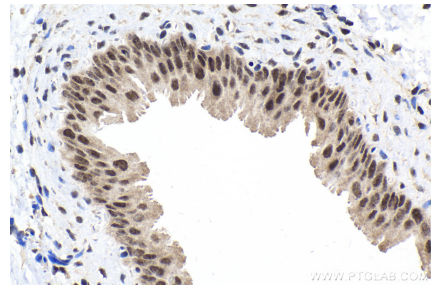
Immunohistochemical analysis of paraffin-embedded mouse bladder tissue slide using KHC1999 (MAFF IHC Kit).



Immunohistochemical analysis of paraffin-embedded mouse lung tissue slide using KHC1999 (MAFF IHC Kit).



Immunohistochemical analysis of paraffin-embedded mouse intestine tissue slide using KHC1999 (MAFF IHC Kit).



Immunohistochemical analysis of paraffin-embedded rat bladder tissue slide using KHC1999 (MAFF IHC Kit).