

IHC*easy* CGGBP1 Ready-To-Use IHC Kit

Catalog Number: **KHC1979**

General Information

Sample type:
FFPE tissue
Cited sample type:
Reactivity:
Human, Mouse, Rat
Cited Reactivity:

Assay type:
Immunohistochemistry
Primary antibody type:
Rabbit Polyclonal
Secondary antibody type:
Polymer-HRP-Goat anti-Rabbit

Kit Component

Component	Size	Concentration
Antigen Retrieval Buffer	100 mL	50×
Washing Buffer	100 mL ×2	20×
Blocking Buffer	5 mL	RTU
Primary Antibody	5 mL	RTU
Secondary Antibody	5 mL	RTU
Chromogen Component A	0.2 mL	RTU
Chromogen Component B	4 mL	RTU
Signal Enhancer	5 mL	RTU
Counter Staining Reagent	5 mL	RTU
Mounting Media	5 mL	RTU
Control Slide	1 slide (Optional)	FFPE
Datasheet	1 Copy	
Manual	1 Copy	

Storage Instructions

All the reagents are stored at 2-8°C. The kit is stable for 6 months from the date of receipt.

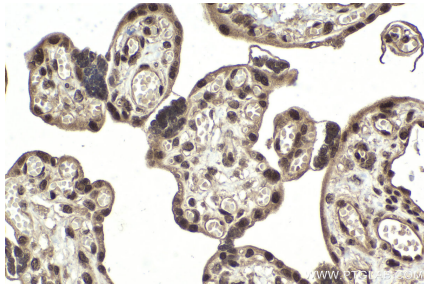
Background

CGGBP1, also named as CGGBP, is a 20 kDa CGG-binding protein. It binds to nonmethylated 5'-d(CGG)(n)-3' trinucleotide repeats in the FMR1 promoter. CGGBP1 may play a role in regulating FMR1 promoter. It is a bona fide midbody protein required for normal abscission and mitosis in general.

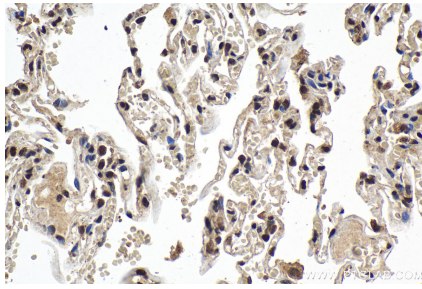
Synonyms

p20-CGGBP DNA-binding protein, CGGBP, CGG-binding protein 1, CGG triplet repeat-binding protein 1, 20 kDa CGG-binding protein

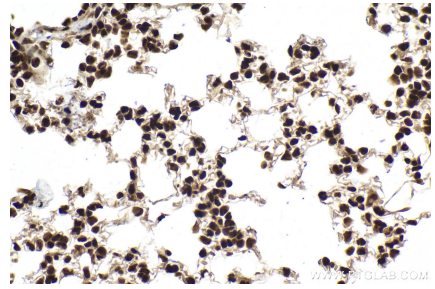
Selected Validation Data



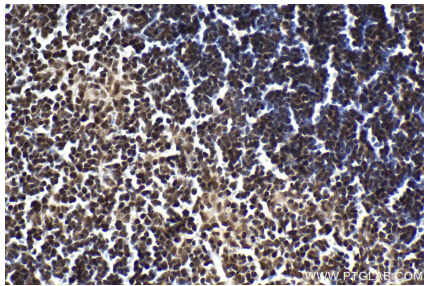
Immunohistochemical analysis of paraffin-embedded human placenta tissue slide using KHC1979 (CGGBP1 IHC Kit).



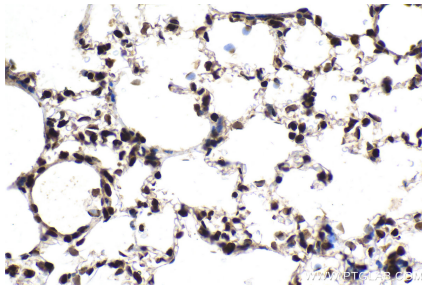
Immunohistochemical analysis of paraffin-embedded human lung tissue slide using KHC1979 (CGGBP1 IHC Kit).



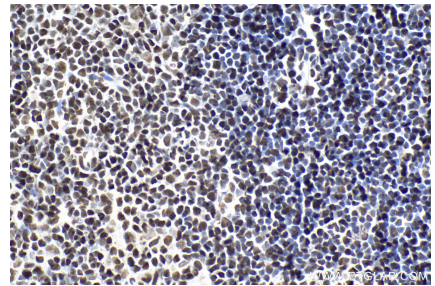
Immunohistochemical analysis of paraffin-embedded mouse lung tissue slide using KHC1979 (CGGBP1 IHC Kit).



Immunohistochemical analysis of paraffin-embedded mouse thymus tissue slide using KHC1979 (CGGBP1 IHC Kit).



Immunohistochemical analysis of paraffin-embedded rat lung tissue slide using KHC1979 (CGGBP1 IHC Kit).



Immunohistochemical analysis of paraffin-embedded rat thymus tissue slide using KHC1979 (CGGBP1 IHC Kit).