

# IHC*easy* XAB2 Ready-To-Use IHC Kit

Catalog Number: **KHC1947**

## General Information

**Sample type:**  
FFPE tissue

**Cited sample type:**

**Reactivity:**  
Human, Mouse, Rat

**Cited Reactivity:**

**Assay type:**  
Immunohistochemistry

**Primary antibody type:**  
Rabbit Polyclonal

**Secondary antibody type:**  
Polymer-HRP-Goat anti-Rabbit

## Kit Component

Component	Size	Concentration
Antigen Retrieval Buffer	100 mL	50×
Washing Buffer	100 mL ×2	20×
Blocking Buffer	5 mL	RTU
Primary Antibody	5 mL	RTU
Secondary Antibody	5 mL	RTU
Chromogen Component A	0.2 mL	RTU
Chromogen Component B	4 mL	RTU
Signal Enhancer	5 mL	RTU
Counter Staining Reagent	5 mL	RTU
Mounting Media	5 mL	RTU
Control Slide	1 slide (Optional)	FFPE
Datasheet	1 Copy	
Manual	1 Copy	

## Storage Instructions

All the reagents are stored at 2-8°C. The kit is stable for 6 months from the date of receipt.

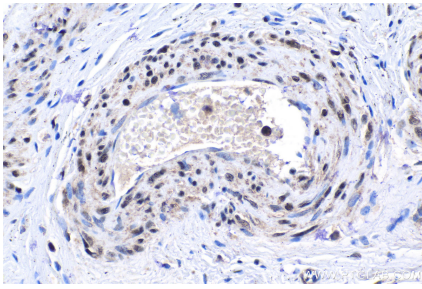
## Background

XPA-binding protein 2 (XAB2) a tetratricopeptide repeat protein involved in transcription-coupled DNA repair and transcription. XAB2 is involved in pre-mRNA splicing, transcription, and transcription-coupled DNA repair, leading to preimplantation lethality, and is essential for mouse embryogenesis. It interacts with Cockayne syndrome groups A and B (CSA and CSB) proteins and RNA polymerase II, which are known to be involved in transcription-coupled repair (TCR) and transcription, and that the antibodies against XAB2 protein inhibited the recovery of RNA synthesis after UV irradiation and normal RNA synthesis when microinjected into living fibroblasts.

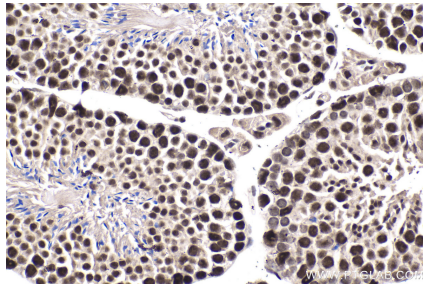
## Synonyms

HCNP, HCRN, KIAA1177, NTC90, Pre mRNA splicing factor SYF1, Protein HCNP, SYF1, XAB2, XPA binding protein 2

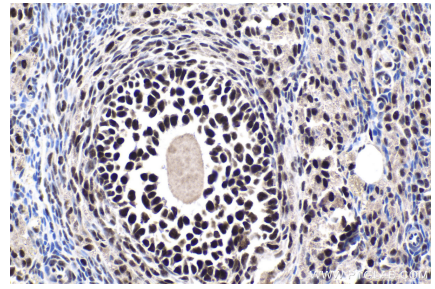
## Selected Validation Data



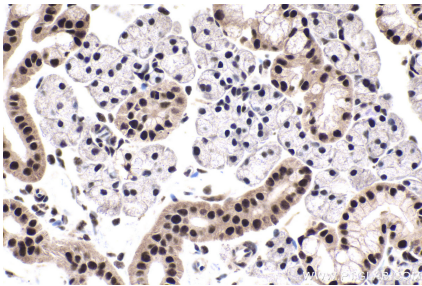
Immunohistochemical analysis of paraffin-embedded human cervical cancer tissue slide using KHC1947 (XAB2 IHC Kit).



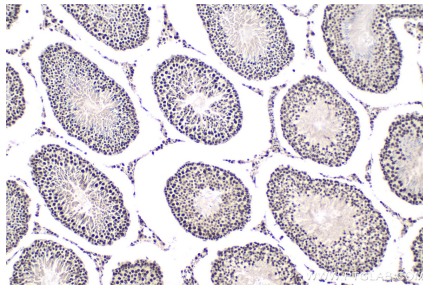
Immunohistochemical analysis of paraffin-embedded mouse testis tissue slide using KHC1947 (XAB2 IHC Kit).



Immunohistochemical analysis of paraffin-embedded rat ovary tissue slide using KHC1947 (XAB2 IHC Kit).



Immunohistochemical analysis of paraffin-embedded rat salivary gland tissue slide using KHC1947 (XAB2 IHC Kit).



Immunohistochemical analysis of paraffin-embedded rat testis tissue slide using KHC1947 (XAB2 IHC Kit).