

# IHC*easy* RGC32 Ready-To-Use IHC Kit

Catalog Number: **KHC1933**

## General Information

Sample type:  
FFPE tissue  
Cited sample type:  
Reactivity:  
Human, Mouse, Rat  
Cited Reactivity:

Assay type:  
Immunohistochemistry  
Primary antibody type:  
Rabbit Polyclonal  
Secondary antibody type:  
Polymer-HRP-Goat anti-Rabbit

## Kit Component

Component	Size	Concentration
Antigen Retrieval Buffer	100 mL	50×
Washing Buffer	100 mL ×2	20×
Blocking Buffer	5 mL	RTU
Primary Antibody	5 mL	RTU
Secondary Antibody	5 mL	RTU
Chromogen Component A	0.2 mL	RTU
Chromogen Component B	4 mL	RTU
Signal Enhancer	5 mL	RTU
Counter Staining Reagent	5 mL	RTU
Mounting Media	5 mL	RTU
Control Slide	1 slide (Optional)	FFPE
Datasheet	1 Copy	
Manual	1 Copy	

## Storage Instructions

All the reagents are stored at 2-8°C. The kit is stable for 6 months from the date of receipt.

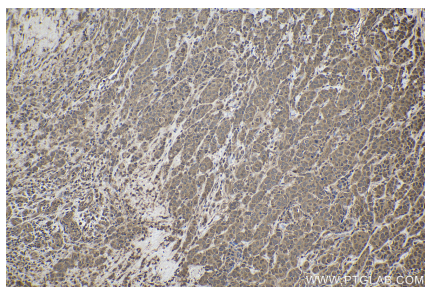
## Background

RGC32, also named as C13orf15, modulates the activity of cell cycle-specific kinases. RGC32 enhances CDC2 activity. RGC32 may contribute to the regulation of the cell cycle. And it inhibits growth of glioma cells by promoting arrest of mitotic progression at the G2/M transition.

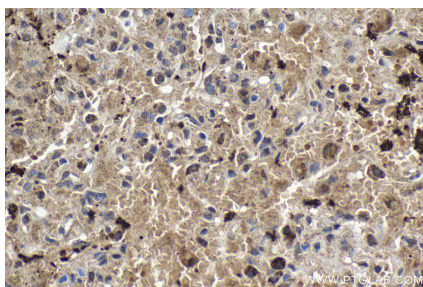
## Synonyms

C13orf15, KIAA0564, RGC 32, RGC32, RGCC

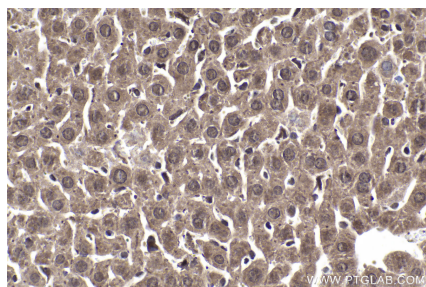
## Selected Validation Data



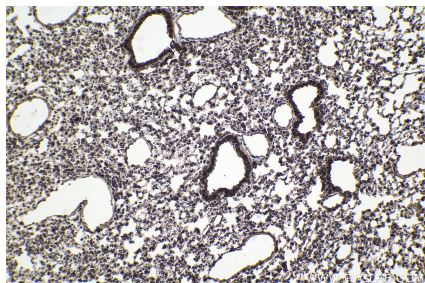
Immunohistochemical analysis of paraffin-embedded human malignant melanoma tissue slide using KHC1933 (RGC32 IHC Kit).



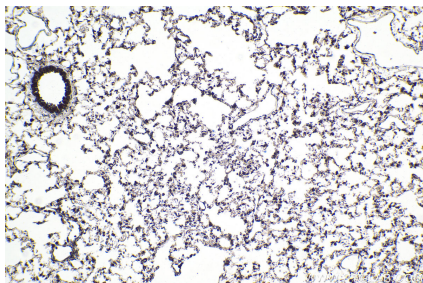
Immunohistochemical analysis of paraffin-embedded human lung tissue slide using KHC1933 (RGC32 IHC Kit).



Immunohistochemical analysis of paraffin-embedded mouse liver tissue slide using KHC1933 (RGC32 IHC Kit).



Immunohistochemical analysis of paraffin-embedded mouse lung tissue slide using KHC1933 (RGC32 IHC Kit).



Immunohistochemical analysis of paraffin-embedded rat lung tissue slide using KHC1933 (RGC32 IHC Kit).