

IHC*easy* IER2 Ready-To-Use IHC Kit

Catalog Number: **KHC1904**

General Information

Sample type:
FFPE tissue

Cited sample type:

Reactivity:
Human, Mouse, Rat

Cited Reactivity:

Assay type:
Immunohistochemistry

Primary antibody type:
Rabbit Polyclonal

Secondary antibody type:
Polymer-HRP-Goat anti-Rabbit

Kit Component

Component	Size	Concentration
Antigen Retrieval Buffer	100 mL	50×
Washing Buffer	100 mL ×2	20×
Blocking Buffer	5 mL	RTU
Primary Antibody	5 mL	RTU
Secondary Antibody	5 mL	RTU
Chromogen Component A	0.2 mL	RTU
Chromogen Component B	4 mL	RTU
Signal Enhancer	5 mL	RTU
Counter Staining Reagent	5 mL	RTU
Mounting Media	5 mL	RTU
Control Slide	1 slide (Optional)	FFPE
Datasheet	1 Copy	
Manual	1 Copy	

Storage Instructions

All the reagents are stored at 2-8°C. The kit is stable for 6 months from the date of receipt.

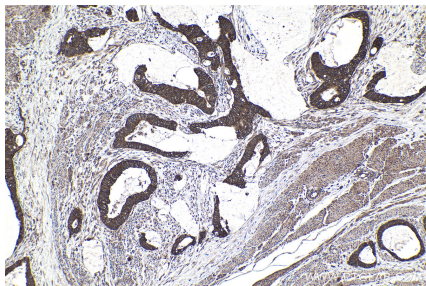
Background

IER2 (also called ETR101, Pip92, 3CH92 and CHX1, hereafter referred to as Ier2, regardless of species) is an immediate early gene that was originally found to be upregulated in fibroblasts upon their activation. Immediate early genes are a group of genes that are rapidly induced in quiescent cells by proliferation- and migration-inducing stimuli. Ier2 may have a role in tumor cell motility and metastasis.

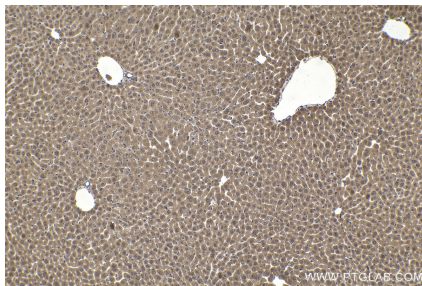
Synonyms

3CH92, CHX1, ETR101, IER2, immediate early response 2, Pip92, Protein ETR101

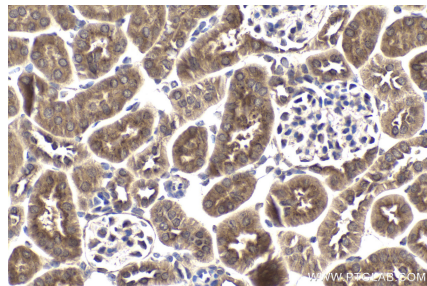
Selected Validation Data



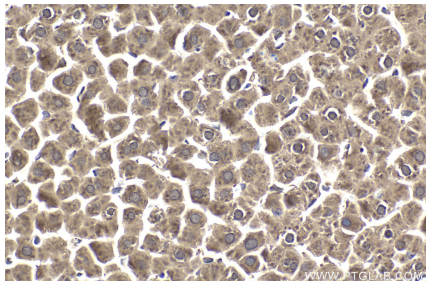
Immunohistochemical analysis of paraffin-embedded human urothelial carcinoma tissue slide using KHC1904 (IER2 IHC Kit).



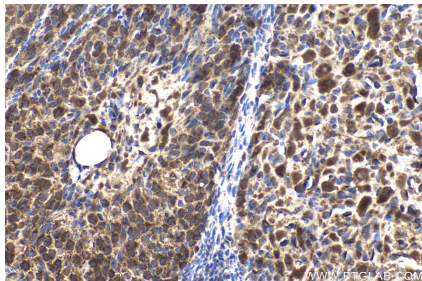
Immunohistochemical analysis of paraffin-embedded mouse liver tissue slide using KHC1904 (IER2 IHC Kit).



Immunohistochemical analysis of paraffin-embedded mouse kidney tissue slide using KHC1904 (IER2 IHC Kit).



Immunohistochemical analysis of paraffin-embedded rat liver tissue slide using KHC1904 (IER2 IHC Kit).



Immunohistochemical analysis of paraffin-embedded rat ovary tissue slide using KHC1904 (IER2 IHC Kit).