

IHC*easy* VPS25 Ready-To-Use IHC Kit

Catalog Number: **KHC1900**

General Information

Sample type:
FFPE tissue
Cited sample type:
Reactivity:
Human, Mouse, Rat
Cited Reactivity:

Assay type:
Immunohistochemistry
Primary antibody type:
Rabbit Polyclonal
Secondary antibody type:
Polymer-HRP-Goat anti-Rabbit

Kit Component

| Component | Size | Concentration |
|--------------------------|--------------------|---------------|
| Antigen Retrieval Buffer | 100 mL | 50× |
| Washing Buffer | 100 mL ×2 | 20× |
| Blocking Buffer | 5 mL | RTU |
| Primary Antibody | 5 mL | RTU |
| Secondary Antibody | 5 mL | RTU |
| Chromogen Component A | 0.2 mL | RTU |
| Chromogen Component B | 4 mL | RTU |
| Signal Enhancer | 5 mL | RTU |
| Counter Staining Reagent | 5 mL | RTU |
| Mounting Media | 5 mL | RTU |
| Control Slide | 1 slide (Optional) | FFPE |
| Datasheet | 1 Copy | |
| Manual | 1 Copy | |

Storage Instructions

All the reagents are stored at 2-8°C. The kit is stable for 6 months from the date of receipt.

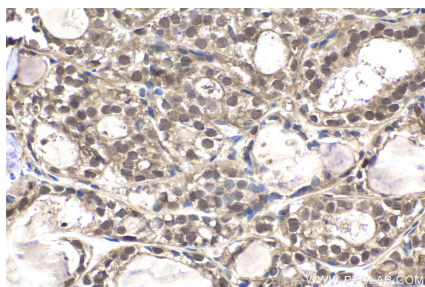
Background

VPS25 is a component of the endosome-associated complex ESCRT-II (Endosomal Sorting Complexes Required for Transport protein II). ESCRT-II complex, composed of VPS25, VPS36, and SNF8, functions in sorting of ubiquitinated membrane proteins during endocytosis. ESCRT-II complex is probably involved in the recruitment of the ESCRT-III complex. VPS25 is highly conserved. Human VPS25 gene maps to chromosome 17q21.31 and is expressed in a wide range of tissues.

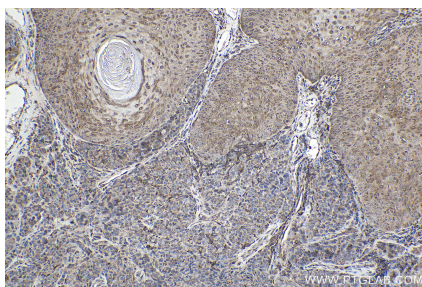
Synonyms

hVps25, ESCRT-II complex subunit VPS25, ELL-associated protein of 20 kDa, EAP20, DERP9

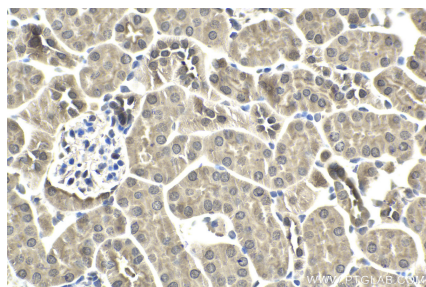
Selected Validation Data



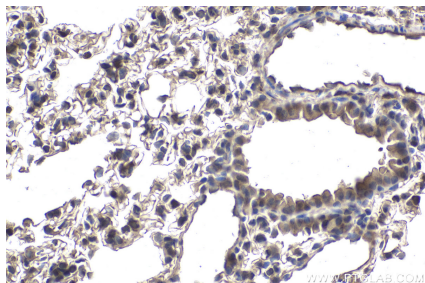
Immunohistochemical analysis of paraffin-embedded human thyroid cancer tissue slide using KHC1900 (VPS25 IHC Kit).



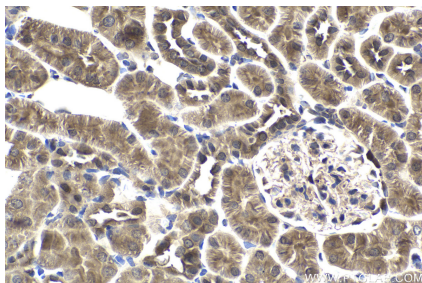
Immunohistochemical analysis of paraffin-embedded human malignant melanoma tissue slide using KHC1900 (VPS25 IHC Kit).



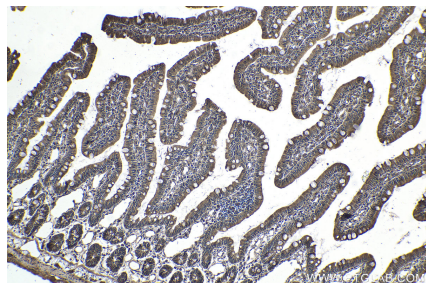
Immunohistochemical analysis of paraffin-embedded mouse kidney tissue slide using KHC1900 (VPS25 IHC Kit).



Immunohistochemical analysis of paraffin-embedded mouse lung tissue slide using KHC1900 (VPS25 IHC Kit).



Immunohistochemical analysis of paraffin-embedded rat kidney tissue slide using KHC1900 (VPS25 IHC Kit).



Immunohistochemical analysis of paraffin-embedded rat small intestine tissue slide using KHC1900 (VPS25 IHC Kit).