

IHC*easy* ATF6B Ready-To-Use IHC Kit

Catalog Number: **KHC1899**

General Information

Sample type:
FFPE tissue
Cited sample type:
Reactivity:
Human, Mouse, Rat
Cited Reactivity:

Assay type:
Immunohistochemistry
Primary antibody type:
Rabbit Polyclonal
Secondary antibody type:
Polymer-HRP-Goat anti-Rabbit

Kit Component

Component	Size	Concentration
Antigen Retrieval Buffer	100 mL	50×
Washing Buffer	100 mL ×2	20×
Blocking Buffer	5 mL	RTU
Primary Antibody	5 mL	RTU
Secondary Antibody	5 mL	RTU
Chromogen Component A	0.2 mL	RTU
Chromogen Component B	4 mL	RTU
Signal Enhancer	5 mL	RTU
Counter Staining Reagent	5 mL	RTU
Mounting Media	5 mL	RTU
Control Slide	1 slide (Optional)	FFPE
Datasheet	1 Copy	
Manual	1 Copy	

Storage Instructions

All the reagents are stored at 2-8°C. The kit is stable for 6 months from the date of receipt.

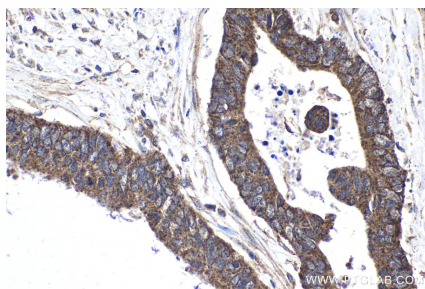
Background

The endoplasmic reticulum (ER)-transmembrane proteins, ATF6 alpha (ATF6) and ATF6 beta (ATF6B), are cleaved during the ER stress response (ERSR). The resulting N-terminal fragments of both ATF6 isoforms, which have conserved basic leucine-zipper and DNA binding domains but divergent transcriptional activation domains, translocate to the nucleus where they bind to ER stress-response elements (ERSE) in ERSR, such as Bip/GRP78.

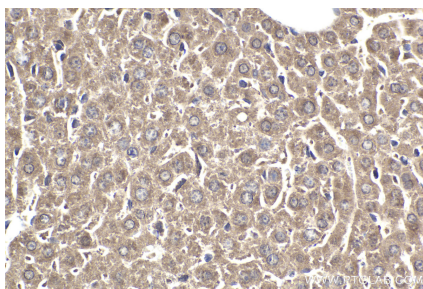
Synonyms

ATF6 beta, ATF6B, CREB RP, CREBL1, G13, Protein G13

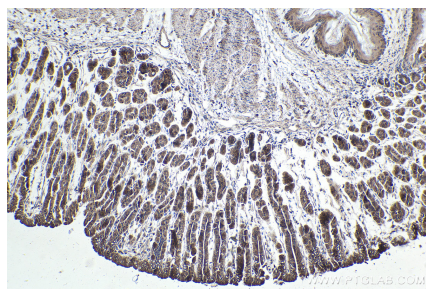
Selected Validation Data



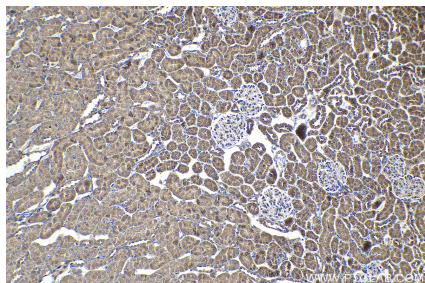
Immunohistochemical analysis of paraffin-embedded human urothelial carcinoma tissue slide using KHC1899 (ATF6B IHC Kit).



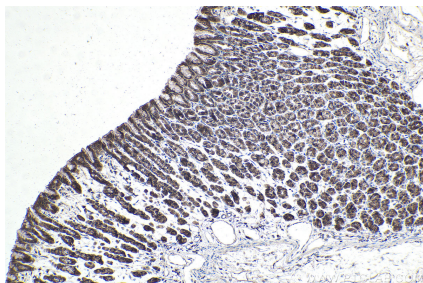
Immunohistochemical analysis of paraffin-embedded mouse liver tissue slide using KHC1899 (ATF6B IHC Kit).



Immunohistochemical analysis of paraffin-embedded mouse stomach tissue slide using KHC1899 (ATF6B IHC Kit).



Immunohistochemical analysis of paraffin-embedded rat kidney tissue slide using KHC1899 (ATF6B IHC Kit).



Immunohistochemical analysis of paraffin-embedded rat stomach tissue slide using KHC1899 (ATF6B IHC Kit).