

# IHC*easy* TSC22D3/GILZ Ready-To-Use IHC Kit

Catalog Number: **KHC1891**

## General Information

Sample type:  
FFPE tissue  
Cited sample type:  
Reactivity:  
Human, Rat  
Cited Reactivity:

Assay type:  
Immunohistochemistry  
Primary antibody type:  
Rabbit Polyclonal  
Secondary antibody type:  
Polymer-HRP-Goat anti-Rabbit

## Kit Component

Component	Size	Concentration
Antigen Retrieval Buffer	100 mL	50×
Washing Buffer	100 mL ×2	20×
Blocking Buffer	5 mL	RTU
Primary Antibody	5 mL	RTU
Secondary Antibody	5 mL	RTU
Chromogen Component A	0.2 mL	RTU
Chromogen Component B	4 mL	RTU
Signal Enhancer	5 mL	RTU
Counter Staining Reagent	5 mL	RTU
Mounting Media	5 mL	RTU
Control Slide	1 slide (Optional)	FFPE
Datasheet	1 Copy	
Manual	1 Copy	

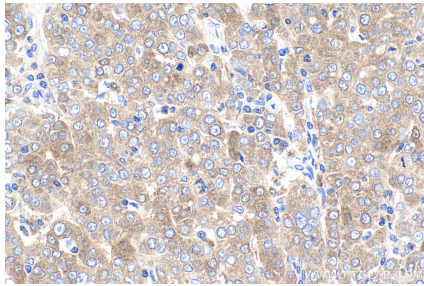
## Storage Instructions

All the reagents are stored at 2-8°C. The kit is stable for 6 months from the date of receipt.

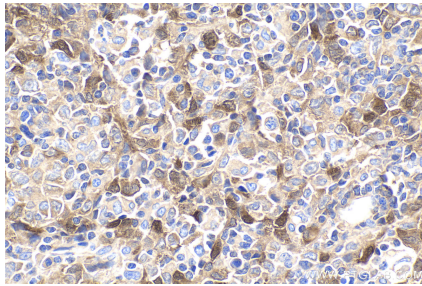
## Synonyms

DIP, DSIP immunoreactive peptide, DSIPI, GILZ, hDIP, Protein DIP, TSC 22 like protein, TSC 22 related protein, TSC 22R, TSC22 domain family protein 3, TSC22 domain family, member 3, TSC22D3

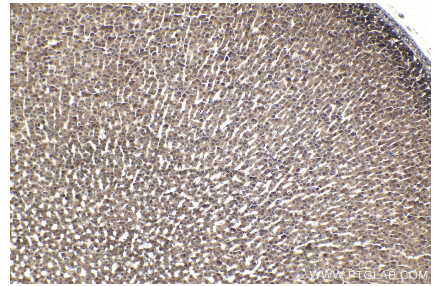
## Selected Validation Data



Immunohistochemical analysis of paraffin-embedded human ovary tumor tissue slide using KHC1891 (TSC22D3/GILZ IHC Kit).



Immunohistochemical analysis of paraffin-embedded human malignant melanoma tissue slide using KHC1891 (TSC22D3/GILZ IHC Kit).



Immunohistochemical analysis of paraffin-embedded rat adrenal gland tissue slide using KHC1891 (TSC22D3/GILZ IHC Kit).