

# IHC*easy* TCF12 Ready-To-Use IHC Kit

Catalog Number: **KHC1888**

## General Information

Sample type:  
FFPE tissue  
Cited sample type:  
Reactivity:  
Human  
Cited Reactivity:

Assay type:  
Immunohistochemistry  
Primary antibody type:  
Rabbit Polyclonal  
Secondary antibody type:  
Polymer-HRP-Goat anti-Rabbit

## Kit Component

Component	Size	Concentration
Antigen Retrieval Buffer	100 mL	50×
Washing Buffer	100 mL ×2	20×
Blocking Buffer	5 mL	RTU
Primary Antibody	5 mL	RTU
Secondary Antibody	5 mL	RTU
Chromogen Component A	0.2 mL	RTU
Chromogen Component B	4 mL	RTU
Signal Enhancer	5 mL	RTU
Counter Staining Reagent	5 mL	RTU
Mounting Media	5 mL	RTU
Control Slide	1 slide (Optional)	FFPE
Datasheet	1 Copy	
Manual	1 Copy	

## Storage Instructions

All the reagents are stored at 2-8°C. The kit is stable for 6 months from the date of receipt.

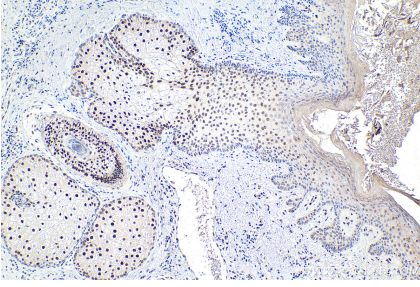
## Background

The product of TCF12 gene (TCF12, also called HTF4 or HEB) is a member of helix-loop-helix (HLH) protein family. TCF12 is a transcriptional regulator that involved in the initiation of neuronal differentiation. It's also known as E proteins, and activates transcription by binding to the E box (5'-CANNTG-3'), because of their direct DNA (E-box) binding ability. TCF12 was shown to suppress E-cadherin expression during the early stages of renal tubular epithelial cell dedifferentiation.

## Synonyms

bHLHb20, DNA binding protein HTF4, E box binding protein, HEB, HsT17266, HTF4, TCF 12, TCF12, TCF12/HEB, transcription factor 12, Transcription factor HTF 4

## Selected Validation Data



Immunohistochemical analysis of paraffin-embedded human skin cancer tissue slide using KHC1888 (TCF12 IHC Kit).