

# IHC*easy* CIDEc Ready-To-Use IHC Kit

Catalog Number: **KHC1867**

## General Information

Sample type:  
FFPE tissue  
Cited sample type:  
Reactivity:  
Human, Mouse, Rat  
Cited Reactivity:

Assay type:  
Immunohistochemistry  
Primary antibody type:  
Rabbit Polyclonal  
Secondary antibody type:  
Polymer-HRP-Goat anti-Rabbit

## Kit Component

Component	Size	Concentration
Antigen Retrieval Buffer	100 mL	50×
Washing Buffer	100 mL ×2	20×
Blocking Buffer	5 mL	RTU
Primary Antibody	5 mL	RTU
Secondary Antibody	5 mL	RTU
Chromogen Component A	0.2 mL	RTU
Chromogen Component B	4 mL	RTU
Signal Enhancer	5 mL	RTU
Counter Staining Reagent	5 mL	RTU
Mounting Media	5 mL	RTU
Control Slide	1 slide (Optional)	FFPE
Datasheet	1 Copy	
Manual	1 Copy	

## Storage Instructions

All the reagents are stored at 2-8°C. The kit is stable for 6 months from the date of receipt.

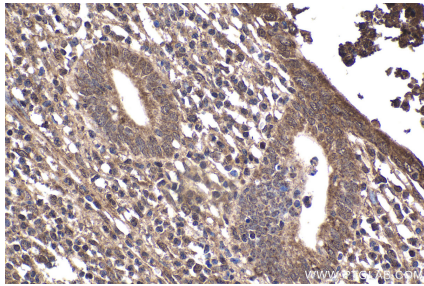
## Background

Cell death-inducing DFF45-like effector (CIDE) proteins, including CIDEA, CIDEB and CIDEc (also called Fsp27 in rodents), are predominantly expressed in brown adipose tissues (BAT), liver and WAT. CIDEc was found to be highly expressed in adipose tissues and to function as a lipid droplet-binding protein that promotes lipid accumulation in adipocytes. While normal mouse livers express low levels of CIDEc protein, its expression is highly upregulated in NALFD, but not in chronic ethanol feeding-induced fatty liver.

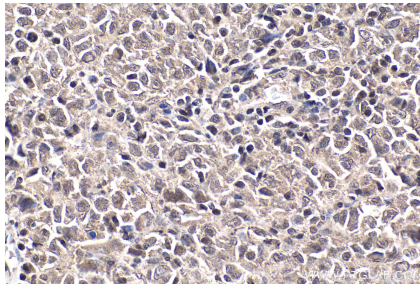
## Synonyms

Cell death activator CIDE 3, CIDE 3, CIDEc, Fsp27

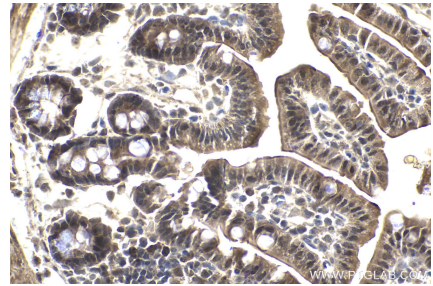
## Selected Validation Data



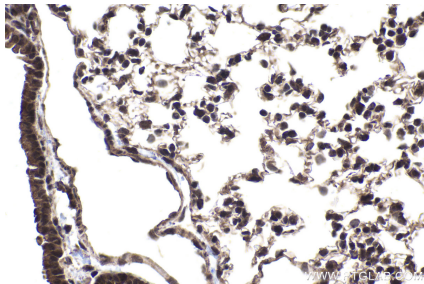
Immunohistochemical analysis of paraffin-embedded human appendicitis tissue slide using KHC1867 (CIDEK IHC Kit).



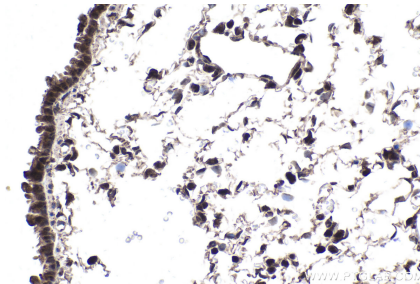
Immunohistochemical analysis of paraffin-embedded human malignant melanoma tissue slide using KHC1867 (CIDEK IHC Kit).



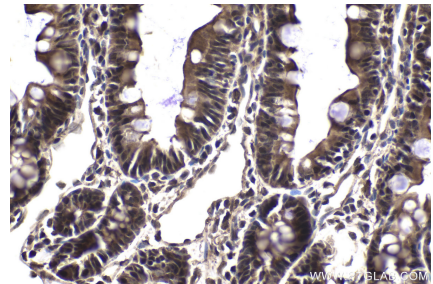
Immunohistochemical analysis of paraffin-embedded mouse small intestine tissue slide using KHC1867 (CIDEK IHC Kit).



Immunohistochemical analysis of paraffin-embedded mouse lung tissue slide using KHC1867 (CIDEK IHC Kit).



Immunohistochemical analysis of paraffin-embedded rat lung tissue slide using KHC1867 (CIDEK IHC Kit).



Immunohistochemical analysis of paraffin-embedded rat small intestine tissue slide using KHC1867 (CIDEK IHC Kit).