

IHC*easy* DHX38 Ready-To-Use IHC Kit

Catalog Number: **KHC1848**

General Information

Sample type:
FFPE tissue

Cited sample type:

Reactivity:
Human, Mouse, Rat

Cited Reactivity:

Assay type:
Immunohistochemistry

Primary antibody type:
Rabbit Polyclonal

Secondary antibody type:
Polymer-HRP-Goat anti-Rabbit

Kit Component

Component	Size	Concentration
Antigen Retrieval Buffer	100 mL	50×
Washing Buffer	100 mL ×2	20×
Blocking Buffer	5 mL	RTU
Primary Antibody	5 mL	RTU
Secondary Antibody	5 mL	RTU
Chromogen Component A	0.2 mL	RTU
Chromogen Component B	4 mL	RTU
Signal Enhancer	5 mL	RTU
Counter Staining Reagent	5 mL	RTU
Mounting Media	5 mL	RTU
Control Slide	1 slide (Optional)	FFPE
Datasheet	1 Copy	
Manual	1 Copy	

Storage Instructions

All the reagents are stored at 2-8°C. The kit is stable for 6 months from the date of receipt.

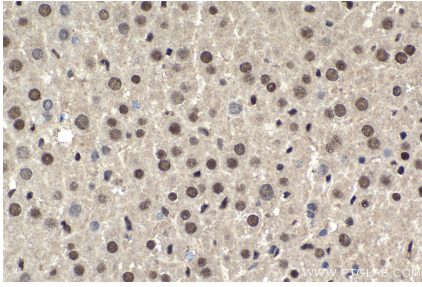
Background

The protein encoded by this gene is a member of the DEAD/H box family of splicing factors, which are involved in pre-mRNA splicing. The yeast prp16 is an essential splicing factor that catalyzes RNA-dependent hydrolysis of nucleoside triphosphates, acting as an ATPase. This protein resembles yeast Prp16 more closely than other DEAD/H family members and also is a general splicing factor essential for catalytic step II during pre-mRNA processing.

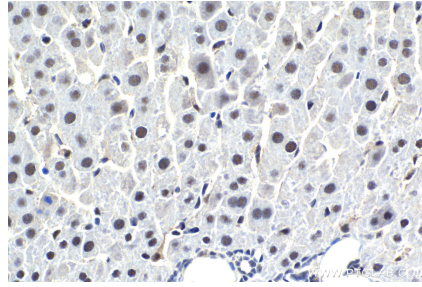
Synonyms

DDX38, DEAH box protein 38, DHX38, KIAA0224, PRP16, PRPF16

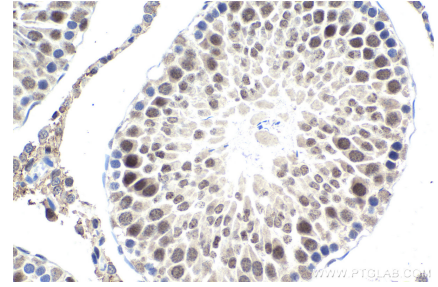
Selected Validation Data



Immunohistochemical analysis of paraffin-embedded mouse liver tissue slide using KHC1848 (DHX38 IHC Kit).



Immunohistochemical analysis of paraffin-embedded rat liver tissue slide using KHC1848 (DHX38 IHC Kit).



Immunohistochemical analysis of paraffin-embedded rat testis tissue slide using KHC1848 (DHX38 IHC Kit).