

IHC*easy* GTF3C2 Ready-To-Use IHC Kit

Catalog Number: **KHC1843**

General Information

Sample type:
FFPE tissue
Cited sample type:
Reactivity:
Human, Mouse, Rat
Cited Reactivity:

Assay type:
Immunohistochemistry
Primary antibody type:
Rabbit Polyclonal
Secondary antibody type:
Polymer-HRP-Goat anti-Rabbit

Kit Component

Component	Size	Concentration
Antigen Retrieval Buffer	100 mL	50×
Washing Buffer	100 mL ×2	20×
Blocking Buffer	5 mL	RTU
Primary Antibody	5 mL	RTU
Secondary Antibody	5 mL	RTU
Chromogen Component A	0.2 mL	RTU
Chromogen Component B	4 mL	RTU
Signal Enhancer	5 mL	RTU
Counter Staining Reagent	5 mL	RTU
Mounting Media	5 mL	RTU
Control Slide	1 slide (Optional)	FFPE
Datasheet	1 Copy	
Manual	1 Copy	

Storage Instructions

All the reagents are stored at 2-8°C. The kit is stable for 6 months from the date of receipt.

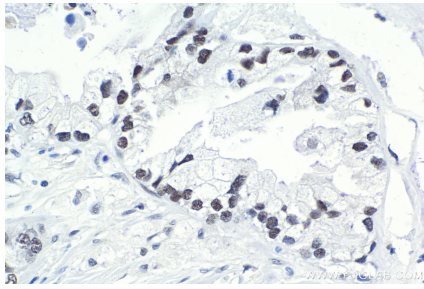
Background

GTF3C2, also named as KIAA0011, is a 911 amino acid protein, which localizes in the nucleus. GTF3C2 is required for RNA polymerase III-mediated transcription. GTF3C2 is a component of TFIIC that initiates transcription complex assembly on tRNA and is required for transcription of 5S rRNA and other stable nuclear and cytoplasmic RNAs. GTF3C2 may play a direct role in stabilizing interactions of TFIIC2 with TFIIC1.

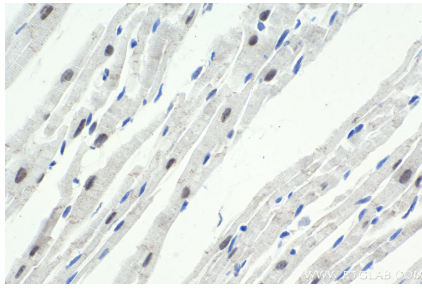
Synonyms

GTF3C2, KIAA0011, TF3C beta, TFIIC 110 kDa subunit, TFIIC BETA, TFIIC110

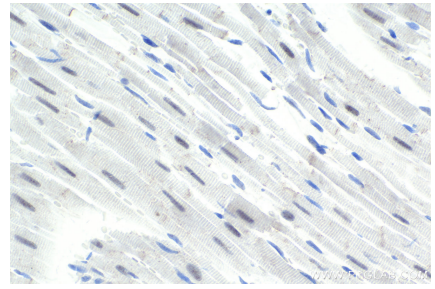
Selected Validation Data



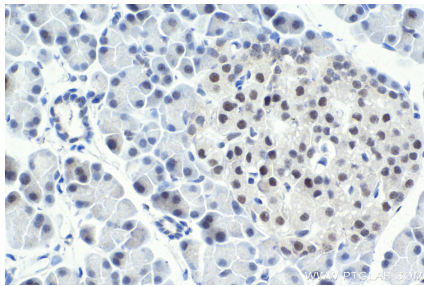
Immunohistochemical analysis of paraffin-embedded human pancreas cancer tissue slide using KHC1843 (GTF3C2 IHC Kit).



Immunohistochemical analysis of paraffin-embedded mouse heart tissue slide using KHC1843 (GTF3C2 IHC Kit).



Immunohistochemical analysis of paraffin-embedded rat heart tissue slide using KHC1843 (GTF3C2 IHC Kit).



Immunohistochemical analysis of paraffin-embedded rat pancreas tissue slide using KHC1843 (GTF3C2 IHC Kit).