

# IHC*easy* CREB3L4 Ready-To-Use IHC Kit

Catalog Number: **KHC1842**

## General Information

Sample type:  
FFPE tissue  
Cited sample type:  
Reactivity:  
Human, Mouse, Rat  
Cited Reactivity:

Assay type:  
Immunohistochemistry  
Primary antibody type:  
Rabbit Polyclonal  
Secondary antibody type:  
Polymer-HRP-Goat anti-Rabbit

## Kit Component

Component	Size	Concentration
Antigen Retrieval Buffer	100 mL	50×
Washing Buffer	100 mL ×2	20×
Blocking Buffer	5 mL	RTU
Primary Antibody	5 mL	RTU
Secondary Antibody	5 mL	RTU
Chromogen Component A	0.2 mL	RTU
Chromogen Component B	4 mL	RTU
Signal Enhancer	5 mL	RTU
Counter Staining Reagent	5 mL	RTU
Mounting Media	5 mL	RTU
Control Slide	1 slide (Optional)	FFPE
Datasheet	1 Copy	
Manual	1 Copy	

## Storage Instructions

All the reagents are stored at 2-8°C. The kit is stable for 6 months from the date of receipt.

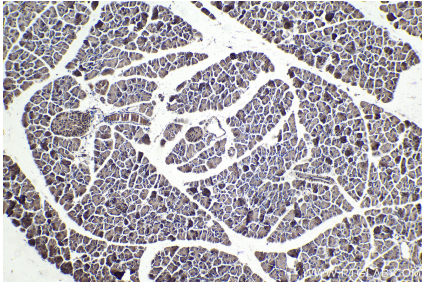
## Background

CREB3L4 (cAMP responsive element binding protein 3-like 4), also named as AIBZIP, CREB4 and ATCE1, is a member of the CREB/ATF transcription factor family. CREB3L4 may play a role in the unfolded protein response, characterized by their regulation of gene expression through the cAMP-responsive element. CREB3L4 is highly expressed in multiple human cancers, such as human breast carcinoma, prostate cancer.

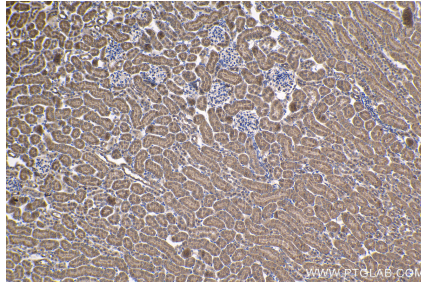
## Synonyms

AIBZIP, ATCE1, Attaching to CRE like 1, CREB 4, CREB3, CREB3L4, CREB4, hJAL, JAL, Tisp40

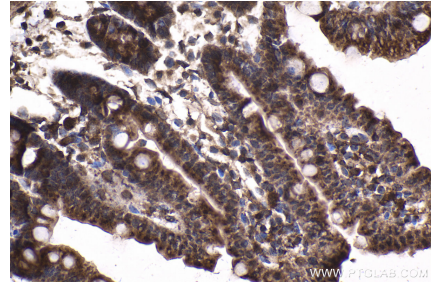
## Selected Validation Data



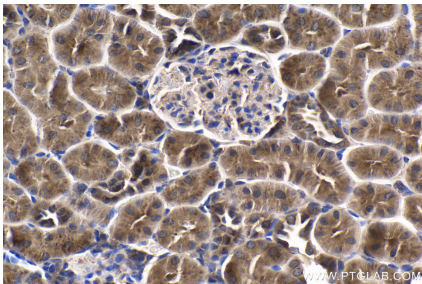
Immunohistochemical analysis of paraffin-embedded mouse pancreas tissue slide using KHC1842 (CREB3L4 IHC Kit).



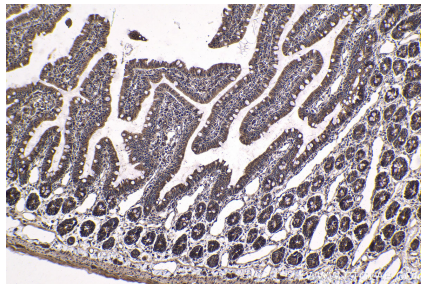
Immunohistochemical analysis of paraffin-embedded mouse kidney tissue slide using KHC1842 (CREB3L4 IHC Kit).



Immunohistochemical analysis of paraffin-embedded mouse small intestine tissue slide using KHC1842 (CREB3L4 IHC Kit).



Immunohistochemical analysis of paraffin-embedded rat kidney tissue slide using KHC1842 (CREB3L4 IHC Kit).



Immunohistochemical analysis of paraffin-embedded rat small intestine tissue slide using KHC1842 (CREB3L4 IHC Kit).