

IHC*easy* SUPT20H/FAM48A Ready-To-Use IHC Kit

Catalog Number: **KHC1836**

General Information

Sample type:
FFPE tissue
Cited sample type:
Reactivity:
Human, Mouse
Cited Reactivity:

Assay type:
Immunohistochemistry
Primary antibody type:
Rabbit Polyclonal
Secondary antibody type:
Polymer-HRP-Goat anti-Rabbit

Kit Component

Component	Size	Concentration
Antigen Retrieval Buffer	100 mL	50×
Washing Buffer	100 mL ×2	20×
Blocking Buffer	5 mL	RTU
Primary Antibody	5 mL	RTU
Secondary Antibody	5 mL	RTU
Chromogen Component A	0.2 mL	RTU
Chromogen Component B	4 mL	RTU
Signal Enhancer	5 mL	RTU
Counter Staining Reagent	5 mL	RTU
Mounting Media	5 mL	RTU
Control Slide	1 slide (Optional)	FFPE
Datasheet	1 Copy	
Manual	1 Copy	

Storage Instructions

All the reagents are stored at 2-8°C. The kit is stable for 6 months from the date of receipt.

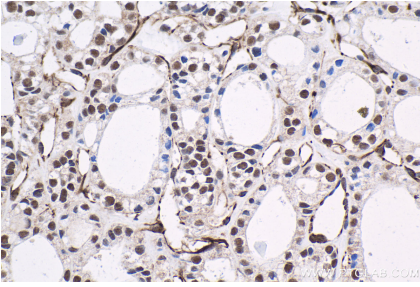
Background

FAM48A also named as C13orf19 or SUPT20H is a 779 amino acid protein, which belongs to the SPT20 family. FAM48A is required for MAP kinase p38 activation during gastrulation and for starvation-induced ATG9A trafficking during autophagy. FAM48A localizes in the nucleus and is highly expressed in testis, moderately in brain and pituitary gland.

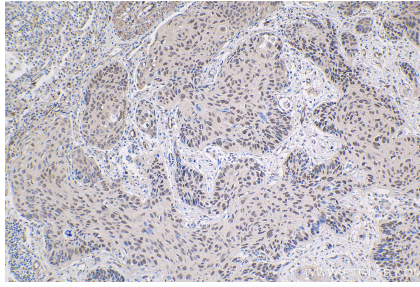
Synonyms

C13, C13orf19, FAM48A, FP757, p38 interacting protein, P38IP, Protein FAM48A

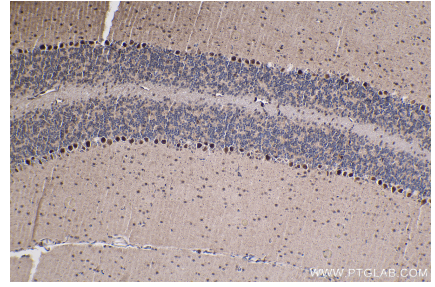
Selected Validation Data



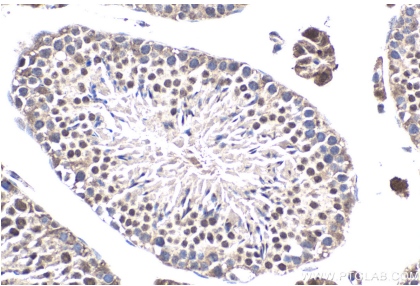
Immunohistochemical analysis of paraffin-embedded human thyroid cancer tissue slide using KHC1836 (SUPT20H/FAM48A IHC Kit).



Immunohistochemical analysis of paraffin-embedded human lung cancer tissue slide using KHC1836 (SUPT20H/FAM48A IHC Kit).



Immunohistochemical analysis of paraffin-embedded mouse cerebellum tissue slide using KHC1836 (SUPT20H/FAM48A IHC Kit).



Immunohistochemical analysis of paraffin-embedded mouse testis tissue slide using KHC1836 (SUPT20H/FAM48A IHC Kit).