

IHC*easy* PBRM1 Ready-To-Use IHC Kit

Catalog Number: **KHC1815**

General Information

Sample type:
FFPE tissue
Cited sample type:
Reactivity:
Human, Mouse
Cited Reactivity:

Assay type:
Immunohistochemistry
Primary antibody type:
Rabbit Polyclonal
Secondary antibody type:
Polymer-HRP-Goat anti-Rabbit

Kit Component

Component	Size	Concentration
Antigen Retrieval Buffer	100 mL	50×
Washing Buffer	100 mL ×2	20×
Blocking Buffer	5 mL	RTU
Primary Antibody	5 mL	RTU
Secondary Antibody	5 mL	RTU
Chromogen Component A	0.2 mL	RTU
Chromogen Component B	4 mL	RTU
Signal Enhancer	5 mL	RTU
Counter Staining Reagent	5 mL	RTU
Mounting Media	5 mL	RTU
Control Slide	1 slide (Optional)	FFPE
Datasheet	1 Copy	
Manual	1 Copy	

Storage Instructions

All the reagents are stored at 2-8°C. The kit is stable for 6 months from the date of receipt.

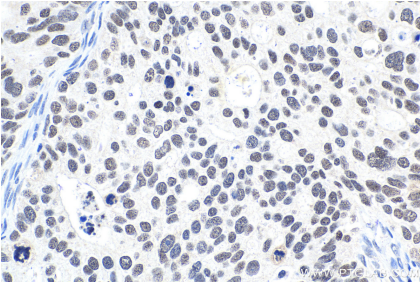
Background

PBRM1, also named hPB1 BAF180 and Polybromo-1D, acts as a negative regulator of cell proliferation. PBRM1 is the second major mutated clear cell RCC cancer gene after VHL. PBRM1 loss is associated with low grade features.

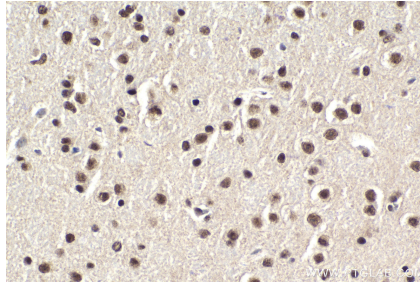
Synonyms

BAF180, BRG1 associated factor 180, hPB1, PB1, PBRM1, polybromo 1, Polybromo 1D, Protein polybromo 1

Selected Validation Data



Immunohistochemical analysis of paraffin-embedded human ovary tumor tissue slide using KHC1815 (PBRM1 IHC Kit).



Immunohistochemical analysis of paraffin-embedded mouse brain tissue slide using KHC1815 (PBRM1 IHC Kit).