

# IHC*easy* DTX1 Ready-To-Use IHC Kit

Catalog Number: **KHC1811**

## General Information

Sample type:  
FFPE tissue  
Cited sample type:  
Reactivity:  
Human, Mouse, Rat  
Cited Reactivity:

Assay type:  
Immunohistochemistry  
Primary antibody type:  
Rabbit Polyclonal  
Secondary antibody type:  
Polymer-HRP-Goat anti-Rabbit

## Kit Component

Component	Size	Concentration
Antigen Retrieval Buffer	100 mL	50×
Washing Buffer	100 mL ×2	20×
Blocking Buffer	5 mL	RTU
Primary Antibody	5 mL	RTU
Secondary Antibody	5 mL	RTU
Chromogen Component A	0.2 mL	RTU
Chromogen Component B	4 mL	RTU
Signal Enhancer	5 mL	RTU
Counter Staining Reagent	5 mL	RTU
Mounting Media	5 mL	RTU
Control Slide	1 slide (Optional)	FFPE
Datasheet	1 Copy	
Manual	1 Copy	

## Storage Instructions

All the reagents are stored at 2-8°C. The kit is stable for 6 months from the date of receipt.

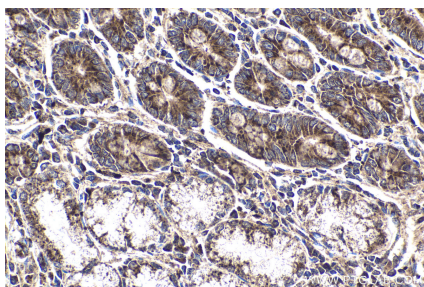
## Background

Deltex homolog 1 (E3 ubiquitin-protein ligase DTX1) is a regulator of Notch signaling, a signaling pathway involved in cell-cell communications that regulates a broad spectrum of cell-fate determinations. Probably acts both as a positive and negative regulator of Notch, depending on the developmental and cell context. Functions as an ubiquitin ligase protein in vivo, mediating ubiquitination and promoting degradation of MEK1, suggesting that it may regulate the Notch pathway via some ubiquitin ligase activity. DTX1 is conserved from Drosophila, and is expressed in a wide array of tissues, particularly in the central nervous system, testes, and endothelial cells, mainly colocalized with Notch1. It contains a RING-type zinc finger and 2 WWE domains.

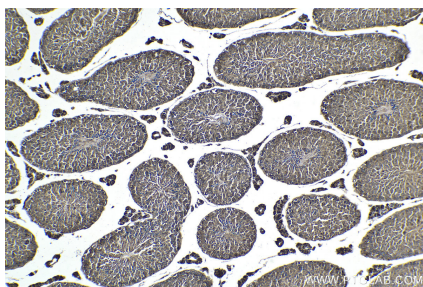
## Synonyms

deltex homolog 1 (Drosophila), Deltex1, DTX1, hDTX1, hDx 1, Protein deltex 1

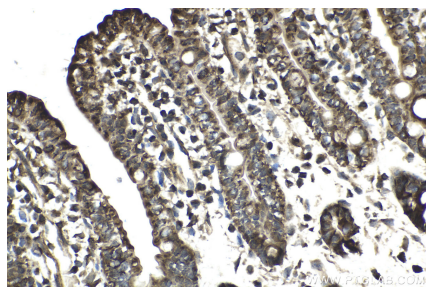
## Selected Validation Data



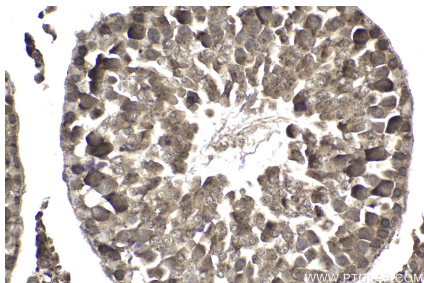
Immunohistochemical analysis of paraffin-embedded human stomach cancer tissue slide using KHC1811 (DTX1 IHC Kit).



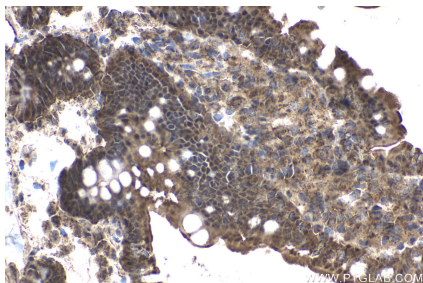
Immunohistochemical analysis of paraffin-embedded mouse testis tissue slide using KHC1811 (DTX1 IHC Kit).



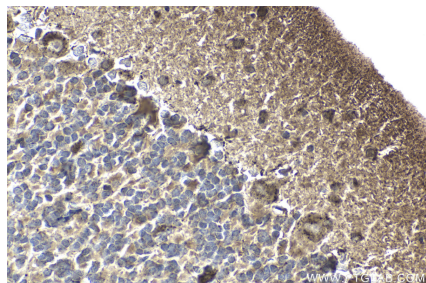
Immunohistochemical analysis of paraffin-embedded mouse small intestine tissue slide using KHC1811 (DTX1 IHC Kit).



Immunohistochemical analysis of paraffin-embedded rat testis tissue slide using KHC1811 (DTX1 IHC Kit).



Immunohistochemical analysis of paraffin-embedded rat small intestine tissue slide using KHC1811 (DTX1 IHC Kit).



Immunohistochemical analysis of paraffin-embedded rat cerebellum tissue slide using KHC1811 (DTX1 IHC Kit).