

IHC*easy* SETD3 Ready-To-Use IHC Kit

Catalog Number: **KHC1807**

General Information

Sample type:
FFPE tissue

Cited sample type:

Reactivity:
Human, Mouse, Rat

Cited Reactivity:

Assay type:
Immunohistochemistry

Primary antibody type:
Rabbit Polyclonal

Secondary antibody type:
Polymer-HRP-Goat anti-Rabbit

Kit Component

Component	Size	Concentration
Antigen Retrieval Buffer	100 mL	50×
Washing Buffer	100 mL ×2	20×
Blocking Buffer	5 mL	RTU
Primary Antibody	5 mL	RTU
Secondary Antibody	5 mL	RTU
Chromogen Component A	0.2 mL	RTU
Chromogen Component B	4 mL	RTU
Signal Enhancer	5 mL	RTU
Counter Staining Reagent	5 mL	RTU
Mounting Media	5 mL	RTU
Control Slide	1 slide (Optional)	FFPE
Datasheet	1 Copy	
Manual	1 Copy	

Storage Instructions

All the reagents are stored at 2-8°C. The kit is stable for 6 months from the date of receipt.

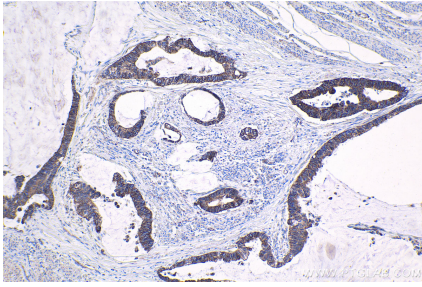
Background

SETD3 (SET domain protein 3), a ubiquitously expressed protein, is epigenetically up-regulated in response to muscle loading and hypertrophy. The SETD3 mRNA is ubiquitously expressed at a similar basal level in most examined tissues, with the noticeable exception of the skeletal muscle, kidneys, and testes. SETD3 deficient female mice have severely decreased litter sizes due to primary maternal dystocia that is refractory to ecobolic induction agents.

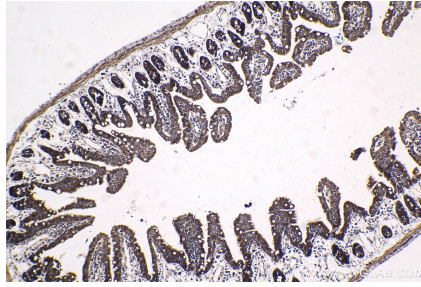
Synonyms

C14orf154, DKFZp761E1415, FLJ23027, SET domain containing 3, SETD3

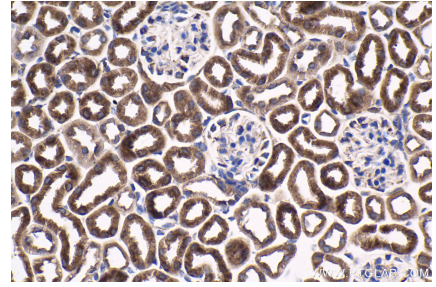
Selected Validation Data



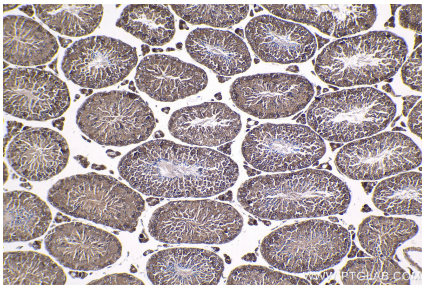
Immunohistochemical analysis of paraffin-embedded human urothelial carcinoma tissue slide using KHC1807 (SETD3 IHC Kit).



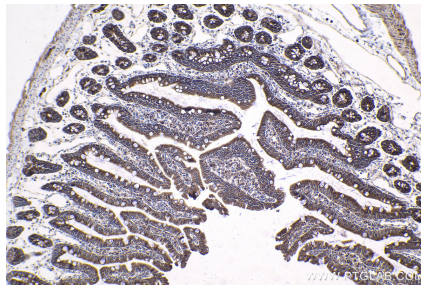
Immunohistochemical analysis of paraffin-embedded mouse small intestine tissue slide using KHC1807 (SETD3 IHC Kit).



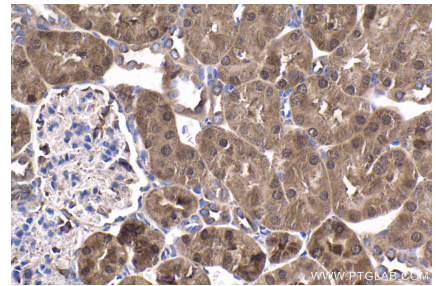
Immunohistochemical analysis of paraffin-embedded mouse kidney tissue slide using KHC1807 (SETD3 IHC Kit).



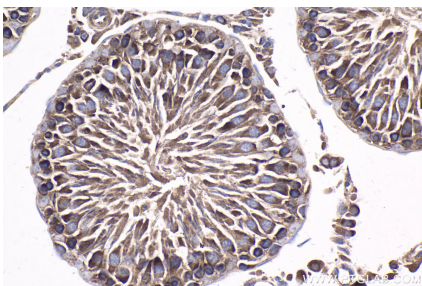
Immunohistochemical analysis of paraffin-embedded mouse testis tissue slide using KHC1807 (SETD3 IHC Kit).



Immunohistochemical analysis of paraffin-embedded rat small intestine tissue slide using KHC1807 (SETD3 IHC Kit).



Immunohistochemical analysis of paraffin-embedded rat kidney tissue slide using KHC1807 (SETD3 IHC Kit).



Immunohistochemical analysis of paraffin-embedded rat testis tissue slide using KHC1807 (SETD3 IHC Kit).