

IHC*easy* IRF2BP2 Ready-To-Use IHC Kit

Catalog Number: **KHC1804**

General Information

Sample type:
FFPE tissue
Cited sample type:
Reactivity:
Human
Cited Reactivity:

Assay type:
Immunohistochemistry
Primary antibody type:
Rabbit Polyclonal
Secondary antibody type:
Polymer-HRP-Goat anti-Rabbit

Kit Component

Component	Size	Concentration
Antigen Retrieval Buffer	100 mL	50×
Washing Buffer	100 mL ×2	20×
Blocking Buffer	5 mL	RTU
Primary Antibody	5 mL	RTU
Secondary Antibody	5 mL	RTU
Chromogen Component A	0.2 mL	RTU
Chromogen Component B	4 mL	RTU
Signal Enhancer	5 mL	RTU
Counter Staining Reagent	5 mL	RTU
Mounting Media	5 mL	RTU
Control Slide	1 slide (Optional)	FFPE
Datasheet	1 Copy	
Manual	1 Copy	

Storage Instructions

All the reagents are stored at 2-8°C. The kit is stable for 6 months from the date of receipt.

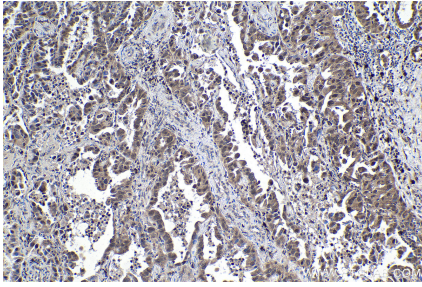
Background

IRF2BP2 belongs to the IRF2BP family. IRF2BP2 acts as a transcriptional repressor and as a transcriptional corepressor in a IRF2-dependent manner. This repression is not mediated at least in part by histone deacetylase activities.

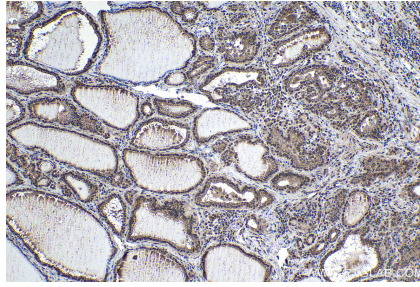
Synonyms

IRF 2 binding protein 2, IRF 2BP2, IRF2BP2

Selected Validation Data



Immunohistochemical analysis of paraffin-embedded human lung cancer tissue slide using KHC1804 (IRF2BP2 IHC Kit).



Immunohistochemical analysis of paraffin-embedded human thyroid cancer tissue slide using KHC1804 (IRF2BP2 IHC Kit).