

# IHC*easy* SETX Ready-To-Use IHC Kit

Catalog Number: **KHC1801**

## General Information

Sample type:  
FFPE tissue  
Cited sample type:  
Reactivity:  
Human, Mouse, Rat  
Cited Reactivity:

Assay type:  
Immunohistochemistry  
Primary antibody type:  
Rabbit Polyclonal  
Secondary antibody type:  
Polymer-HRP-Goat anti-Rabbit

## Kit Component

Component	Size	Concentration
Antigen Retrieval Buffer	100 mL	50×
Washing Buffer	100 mL ×2	20×
Blocking Buffer	5 mL	RTU
Primary Antibody	5 mL	RTU
Secondary Antibody	5 mL	RTU
Chromogen Component A	0.2 mL	RTU
Chromogen Component B	4 mL	RTU
Signal Enhancer	5 mL	RTU
Counter Staining Reagent	5 mL	RTU
Mounting Media	5 mL	RTU
Control Slide	1 slide (Optional)	FFPE
Datasheet	1 Copy	
Manual	1 Copy	

## Storage Instructions

All the reagents are stored at 2-8°C. The kit is stable for 6 months from the date of receipt.

## Background

SETX is involved in DNA double-strand breaks damage response generated by oxidative stress. It might also plays a role in the development and maturation of germ cells.

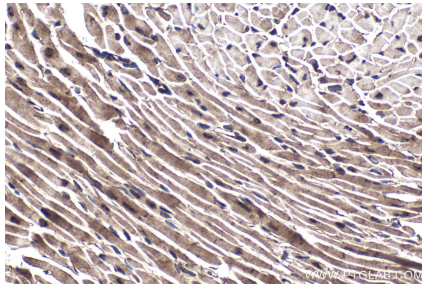
## Synonyms

ALS4, AOA2, KIAA0625, Probable helicase senataxin, SCAR1, SEN1 homolog, senataxin, SETX

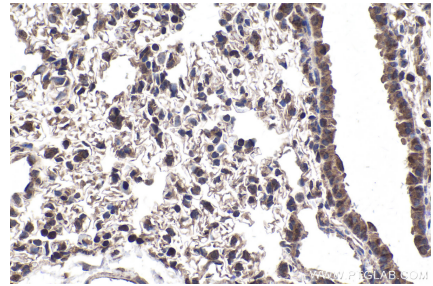
## Selected Validation Data



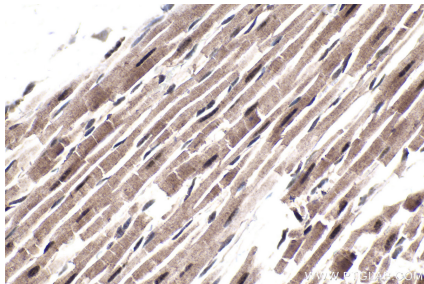
Immunohistochemical analysis of paraffin-embedded human urothelial carcinoma tissue slide using KHC1801 (SETX IHC Kit).



Immunohistochemical analysis of paraffin-embedded mouse heart tissue slide using KHC1801 (SETX IHC Kit).



Immunohistochemical analysis of paraffin-embedded mouse lung tissue slide using KHC1801 (SETX IHC Kit).



Immunohistochemical analysis of paraffin-embedded rat heart tissue slide using KHC1801 (SETX IHC Kit).