

IHC*easy* PTPRN Ready-To-Use IHC Kit

Catalog Number: **KHC1765**

General Information

Sample type:
FFPE tissue

Cited sample type:

Reactivity:
Human, Mouse, Rat

Cited Reactivity:

Assay type:
Immunohistochemistry

Primary antibody type:
Rabbit Polyclonal

Secondary antibody type:
Polymer-HRP-Goat anti-Rabbit

Kit Component

Component	Size	Concentration
Antigen Retrieval Buffer	100 mL	50×
Washing Buffer	100 mL ×2	20×
Blocking Buffer	5 mL	RTU
Primary Antibody	5 mL	RTU
Secondary Antibody	5 mL	RTU
Chromogen Component A	0.2 mL	RTU
Chromogen Component B	4 mL	RTU
Signal Enhancer	5 mL	RTU
Counter Staining Reagent	5 mL	RTU
Mounting Media	5 mL	RTU
Control Slide	1 slide (Optional)	FFPE
Datasheet	1 Copy	
Manual	1 Copy	

Storage Instructions

All the reagents are stored at 2-8°C. The kit is stable for 6 months from the date of receipt.

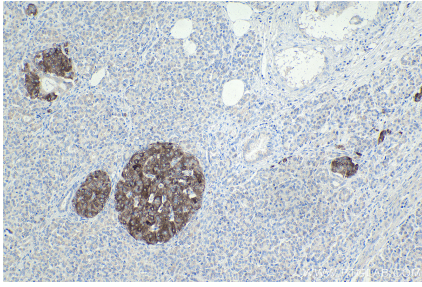
Background

PTPRN is a member of the protein tyrosine phosphatase (PTP) family, which contains a transmembrane region, an intracellular PTP-like domain and an extracellular N-terminus. Experiments found that PTPRN localizes to secretory granules and is exclusively expressed in neuroendocrine cells (including pancreatic islets cell). PTPRN was found to be a major autoantigen in insulin-dependent diabetes mellitus and the detection of autoantibodies against PTPRN is commonly used as a diabetes diagnosis marker.

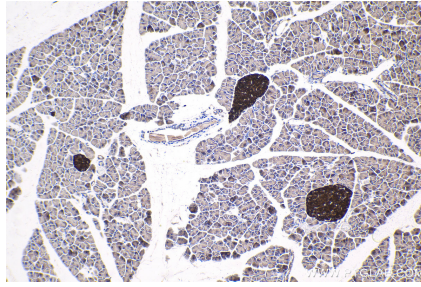
Synonyms

IA 2, IA 2/PTP, IA2, ICA 512, ICA3, ICA512, Islet cell antigen 512, Islet cell autoantigen 3, PTP IA 2, PTPRN, R PTP N

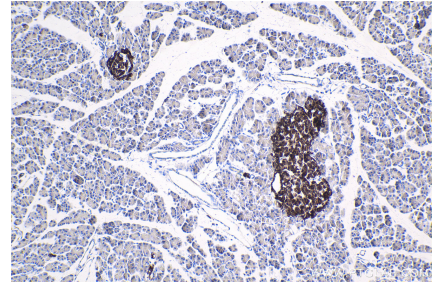
Selected Validation Data



Immunohistochemical analysis of paraffin-embedded human pancreas cancer tissue slide using KHC1765 (PTRN IHC Kit).



Immunohistochemical analysis of paraffin-embedded mouse pancreas tissue slide using KHC1765 (PTRN IHC Kit).



Immunohistochemical analysis of paraffin-embedded rat pancreas tissue slide using KHC1765 (PTRN IHC Kit).