

IHC*easy* IFI16 Ready-To-Use IHC Kit

Catalog Number: **KHC1764**

General Information

Sample type:
FFPE tissue

Cited sample type:

Reactivity:
Human, Mouse, Rat

Cited Reactivity:

Assay type:
Immunohistochemistry

Primary antibody type:
Rabbit Polyclonal

Secondary antibody type:
Polymer-HRP-Goat anti-Rabbit

Kit Component

Component	Size	Concentration
Antigen Retrieval Buffer	100 mL	50×
Washing Buffer	100 mL ×2	20×
Blocking Buffer	5 mL	RTU
Primary Antibody	5 mL	RTU
Secondary Antibody	5 mL	RTU
Chromogen Component A	0.2 mL	RTU
Chromogen Component B	4 mL	RTU
Signal Enhancer	5 mL	RTU
Counter Staining Reagent	5 mL	RTU
Mounting Media	5 mL	RTU
Control Slide	1 slide (Optional)	FFPE
Datasheet	1 Copy	
Manual	1 Copy	

Storage Instructions

All the reagents are stored at 2-8°C. The kit is stable for 6 months from the date of receipt.

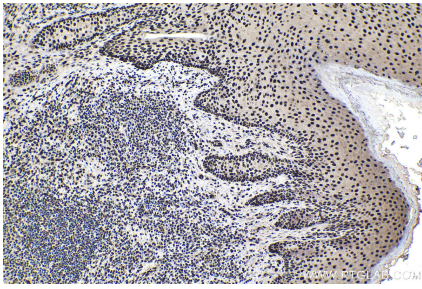
Background

IFI16 is a member of a family of interferon-inducible nuclear proteins involved in transcriptional regulation functions as a transcriptional repressor. IFI16 may be involved in TP53-mediated transcriptional activation by enhancing TP53 sequence-specific DNA binding and modulating TP53 phosphorylation status. It has been reported that IFI16 participates in the regulation of autophagy, TP53-mediated cell death and innate immune response.

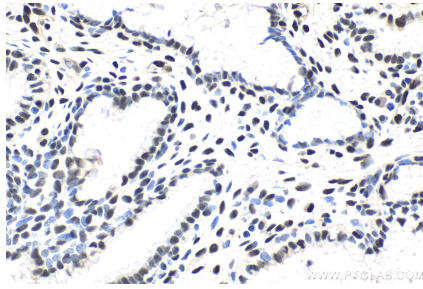
Synonyms

Ifi 16, IFI16, IFNGIP1, PYHIN2

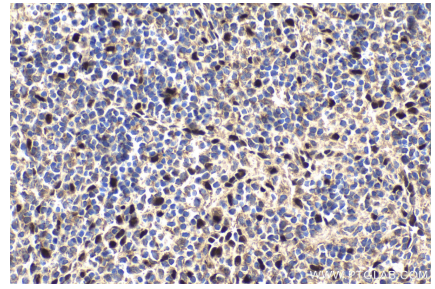
Selected Validation Data



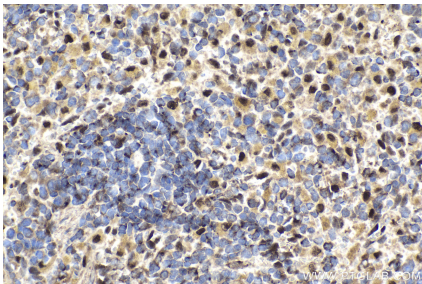
Immunohistochemical analysis of paraffin-embedded human skin cancer tissue slide using KHC1764 (IFI16 IHC Kit).



Immunohistochemical analysis of paraffin-embedded human cervical cancer tissue slide using KHC1764 (IFI16 IHC Kit).



Immunohistochemical analysis of paraffin-embedded mouse spleen tissue slide using KHC1764 (IFI16 IHC Kit).



Immunohistochemical analysis of paraffin-embedded rat spleen tissue slide using KHC1764 (IFI16 IHC Kit).