

IHC*easy* KANK1 Ready-To-Use IHC Kit

Catalog Number: **KHC1734**

General Information

Sample type:
FFPE tissue
Cited sample type:
Reactivity:
Human, Mouse, Rat
Cited Reactivity:

Assay type:
Immunohistochemistry
Primary antibody type:
Rabbit Polyclonal
Secondary antibody type:
Polymer-HRP-Goat anti-Rabbit

Kit Component

Component	Size	Concentration
Antigen Retrieval Buffer	100 mL	50×
Washing Buffer	100 mL ×2	20×
Blocking Buffer	5 mL	RTU
Primary Antibody	5 mL	RTU
Secondary Antibody	5 mL	RTU
Chromogen Component A	0.2 mL	RTU
Chromogen Component B	4 mL	RTU
Signal Enhancer	5 mL	RTU
Counter Staining Reagent	5 mL	RTU
Mounting Media	5 mL	RTU
Control Slide	1 slide (Optional)	FFPE
Datasheet	1 Copy	
Manual	1 Copy	

Storage Instructions

All the reagents are stored at 2-8°C. The kit is stable for 6 months from the date of receipt.

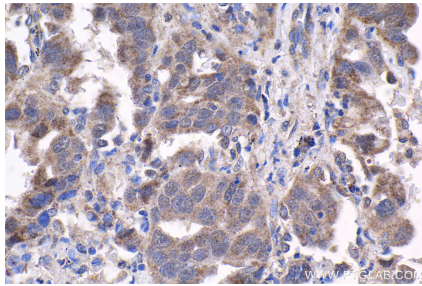
Background

KANK1 (KN motif and ankyrin repeat domain-containing protein 1) is involved in the control of cytoskeleton formation by regulating actin polymerization, inhibiting actin fiber formation and cell migration. It inhibits RhoA activity, the formation of lamellipodia but not of filopodia. It also inhibits fibronectin-mediated cell spreading and regulates Rac signaling pathways. Talin-KANK1 interaction controls the recruitment of cortical microtubule stabilizing complexes to focal adhesions.

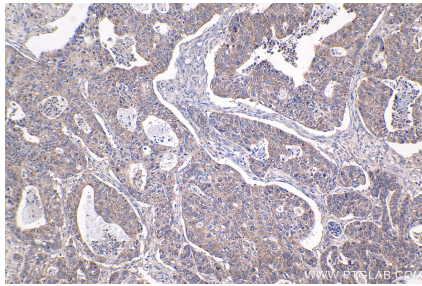
Synonyms

ANKRD15, DKFZp451G231, KANK, KANK1, KIAA0172

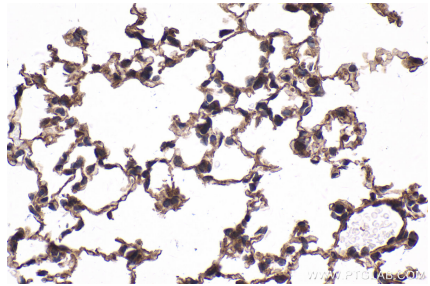
Selected Validation Data



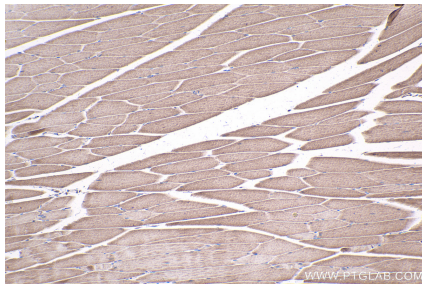
Immunohistochemical analysis of paraffin-embedded human lung cancer tissue slide using KHC1734 (KANK1 IHC Kit).



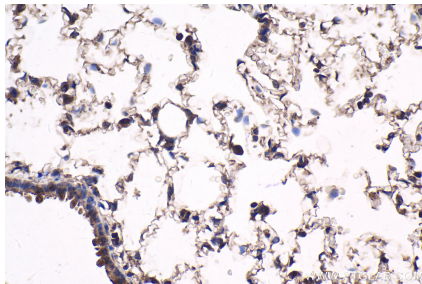
Immunohistochemical analysis of paraffin-embedded human stomach cancer tissue slide using KHC1734 (KANK1 IHC Kit).



Immunohistochemical analysis of paraffin-embedded mouse lung tissue slide using KHC1734 (KANK1 IHC Kit).



Immunohistochemical analysis of paraffin-embedded mouse skeletal muscle tissue slide using KHC1734 (KANK1 IHC Kit).



Immunohistochemical analysis of paraffin-embedded rat lung tissue slide using KHC1734 (KANK1 IHC Kit).