

# IHC*easy* TRIM25 Ready-To-Use IHC Kit

Catalog Number: **KHC1729**

## General Information

Sample type:  
FFPE tissue  
Cited sample type:  
Reactivity:  
Human, Mouse, Rat  
Cited Reactivity:

Assay type:  
Immunohistochemistry  
Primary antibody type:  
Rabbit Polyclonal  
Secondary antibody type:  
Polymer-HRP-Goat anti-Rabbit

## Kit Component

Component	Size	Concentration
Antigen Retrieval Buffer	100 mL	50×
Washing Buffer	100 mL ×2	20×
Blocking Buffer	5 mL	RTU
Primary Antibody	5 mL	RTU
Secondary Antibody	5 mL	RTU
Chromogen Component A	0.2 mL	RTU
Chromogen Component B	4 mL	RTU
Signal Enhancer	5 mL	RTU
Counter Staining Reagent	5 mL	RTU
Mounting Media	5 mL	RTU
Control Slide	1 slide (Optional)	FFPE
Datasheet	1 Copy	
Manual	1 Copy	

## Storage Instructions

All the reagents are stored at 2-8°C. The kit is stable for 6 months from the date of receipt.

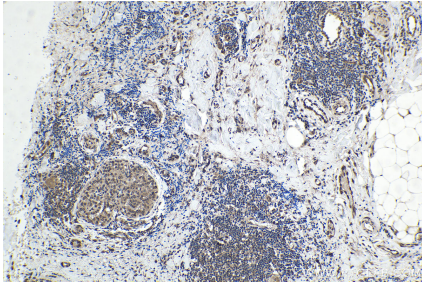
## Background

TRIM25 (tripartite motif-containing 25) is also named as EFP, Z147, ZNF147, RNF147 and belongs to the zinc finger protein family and tripartite motif (TRIM) family. It induces the Lys63-linked ubiquitination of RIG-I, which is crucial for the cytosolic RIG-I signalling pathway to elicit host antiviral innate immunity. It is also essential not only for DDX58 ubiquitination but also for DDX58-mediated interferon-production and antiviral activity in response to RNA virus infection. TRIM25 can be detected in both the cytoplasmic and nuclear.

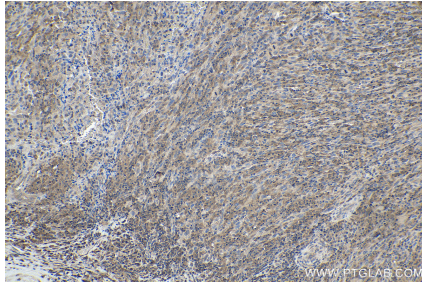
## Synonyms

EFP, RING finger protein 147, RNF147, TRIM25, tripartite motif containing 25, Z147, Zinc finger protein 147, ZNF147

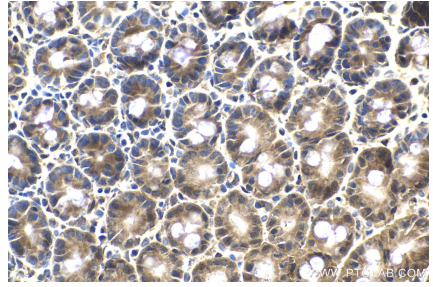
## Selected Validation Data



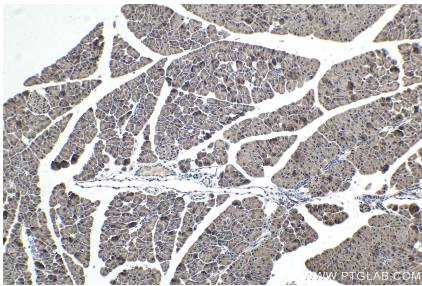
Immunohistochemical analysis of paraffin-embedded human thyroid cancer tissue slide using KHC1729 (TRIM25 IHC Kit).



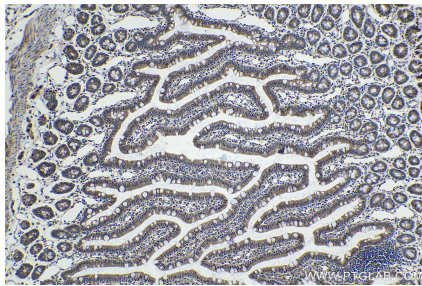
Immunohistochemical analysis of paraffin-embedded human skin cancer tissue slide using KHC1729 (TRIM25 IHC Kit).



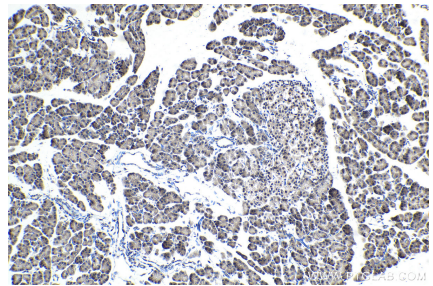
Immunohistochemical analysis of paraffin-embedded mouse small intestine tissue slide using KHC1729 (TRIM25 IHC Kit).



Immunohistochemical analysis of paraffin-embedded mouse pancreas tissue slide using KHC1729 (TRIM25 IHC Kit).



Immunohistochemical analysis of paraffin-embedded rat small intestine tissue slide using KHC1729 (TRIM25 IHC Kit).



Immunohistochemical analysis of paraffin-embedded rat pancreas tissue slide using KHC1729 (TRIM25 IHC Kit).