

IHC*easy* MTA1 Ready-To-Use IHC Kit

Catalog Number: **KHC1710**

General Information

Sample type:
FFPE tissue

Cited sample type:

Reactivity:
Human, Mouse, Rat

Cited Reactivity:

Assay type:
Immunohistochemistry

Primary antibody type:
Rabbit Polyclonal

Secondary antibody type:
Polymer-HRP-Goat anti-Rabbit

Kit Component

Component	Size	Concentration
Antigen Retrieval Buffer	100 mL	50×
Washing Buffer	100 mL ×2	20×
Blocking Buffer	5 mL	RTU
Primary Antibody	5 mL	RTU
Secondary Antibody	5 mL	RTU
Chromogen Component A	0.2 mL	RTU
Chromogen Component B	4 mL	RTU
Signal Enhancer	5 mL	RTU
Counter Staining Reagent	5 mL	RTU
Mounting Media	5 mL	RTU
Control Slide	1 slide (Optional)	FFPE
Datasheet	1 Copy	
Manual	1 Copy	

Storage Instructions

All the reagents are stored at 2-8°C. The kit is stable for 6 months from the date of receipt.

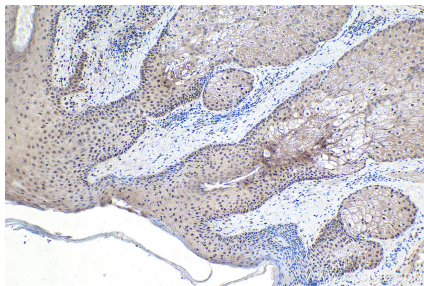
Background

Metastasis-associated protein 1 (MTA1) is a member of the MTA family which is involved in regulating DNA-based biological processes. MTA1 is an integral part of nucleosome remodeling histone deacetylase complex (NuRD complex) and regulates nucleosome remodeling and deacetylation by stabilizing the NuRD complex and related proteins. MTA1 expression is associated with tumor malignancy in several cancer.

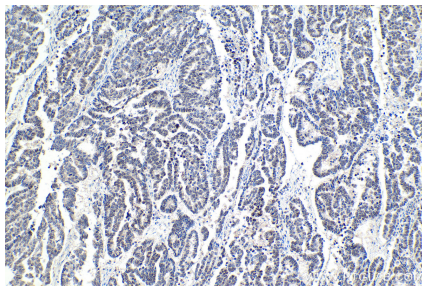
Synonyms

metastasis associated 1, MTA1

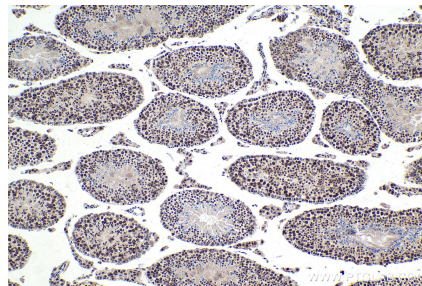
Selected Validation Data



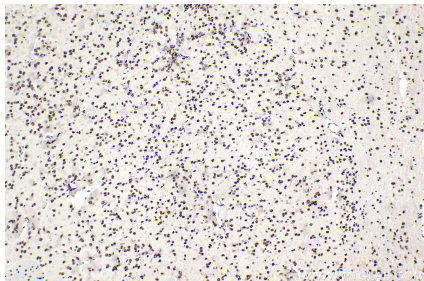
Immunohistochemical analysis of paraffin-embedded human skin cancer tissue slide using KHC1710 (MTA1 IHC Kit).



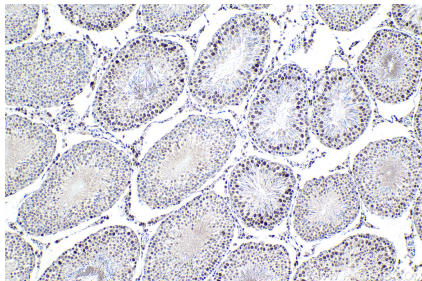
Immunohistochemical analysis of paraffin-embedded human ovary tumor tissue slide using KHC1710 (MTA1 IHC Kit).



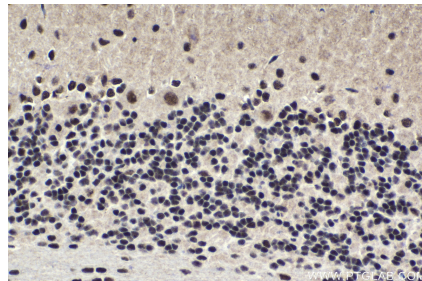
Immunohistochemical analysis of paraffin-embedded mouse testis tissue slide using KHC1710 (MTA1 IHC Kit).



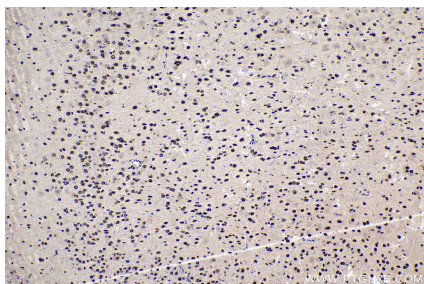
Immunohistochemical analysis of paraffin-embedded mouse brain tissue slide using KHC1710 (MTA1 IHC Kit).



Immunohistochemical analysis of paraffin-embedded rat testis tissue slide using KHC1710 (MTA1 IHC Kit).



Immunohistochemical analysis of paraffin-embedded rat cerebellum tissue slide using KHC1710 (MTA1 IHC Kit).



Immunohistochemical analysis of paraffin-embedded rat brain tissue slide using KHC1710 (MTA1 IHC Kit).