

IHC*easy* SRSF5/SFRS5 Ready-To-Use IHC Kit

Catalog Number: **KHC1708**

General Information

Sample type:
FFPE tissue
Cited sample type:
Reactivity:
Human, Mouse, Rat
Cited Reactivity:

Assay type:
Immunohistochemistry
Primary antibody type:
Rabbit Polyclonal
Secondary antibody type:
Polymer-HRP-Goat anti-Rabbit

Kit Component

Component	Size	Concentration
Antigen Retrieval Buffer	100 mL	50×
Washing Buffer	100 mL ×2	20×
Blocking Buffer	5 mL	RTU
Primary Antibody	5 mL	RTU
Secondary Antibody	5 mL	RTU
Chromogen Component A	0.2 mL	RTU
Chromogen Component B	4 mL	RTU
Signal Enhancer	5 mL	RTU
Counter Staining Reagent	5 mL	RTU
Mounting Media	5 mL	RTU
Control Slide	1 slide (Optional)	FFPE
Datasheet	1 Copy	
Manual	1 Copy	

Storage Instructions

All the reagents are stored at 2-8°C. The kit is stable for 6 months from the date of receipt.

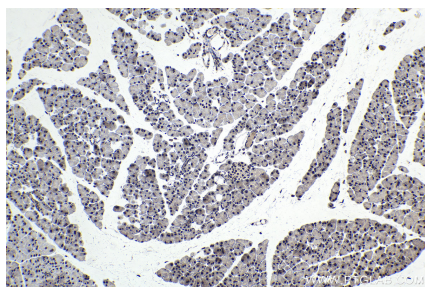
Background

SR proteins own a characteristic C-terminal Ser/Arg-rich repeat (RS domain) of variable length and constitute a family of highly conserved nuclear phosphoproteins that can function as both essential and alternative pre-mRNA splicing factors. The binding of SR proteins to pre-mRNA appears to be one of the earliest steps in spliceosome assembly, enhancing the binding of U1 snRNP to the 5' splice site to form a commitment complex. Alternative splicing has a major role in the regulation of gene expression. SFRS5 belongs to the serine/arginine (SR) protein family of regulators of alternative pre-mRNA splicing.

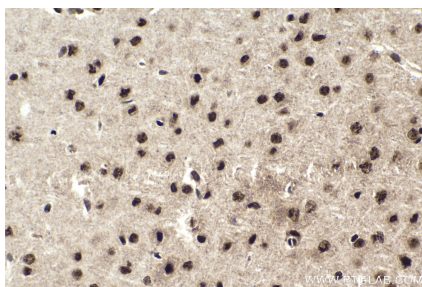
Synonyms

Delayed early protein HRS, HRS, Pre mRNA splicing factor SRP40, SFRS5, SRP40, SRSF5

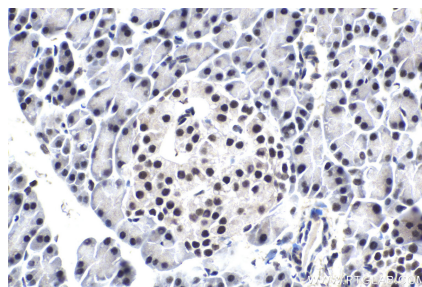
Selected Validation Data



Immunohistochemical analysis of paraffin-embedded mouse pancreas tissue slide using KHC1708 (SRSF5/SFRS5 IHC Kit).



Immunohistochemical analysis of paraffin-embedded mouse brain tissue slide using KHC1708 (SRSF5/SFRS5 IHC Kit).



Immunohistochemical analysis of paraffin-embedded rat pancreas tissue slide using KHC1708 (SRSF5/SFRS5 IHC Kit).