

# IHC*easy* PPP1R8 Ready-To-Use IHC Kit

Catalog Number: **KHC1697**

## General Information

**Sample type:**  
FFPE tissue

**Cited sample type:**

**Reactivity:**  
Human, Mouse, Rat

**Cited Reactivity:**

**Assay type:**  
Immunohistochemistry

**Primary antibody type:**  
Rabbit Polyclonal

**Secondary antibody type:**  
Polymer-HRP-Goat anti-Rabbit

## Kit Component

Component	Size	Concentration
Antigen Retrieval Buffer	100 mL	50×
Washing Buffer	100 mL ×2	20×
Blocking Buffer	5 mL	RTU
Primary Antibody	5 mL	RTU
Secondary Antibody	5 mL	RTU
Chromogen Component A	0.2 mL	RTU
Chromogen Component B	4 mL	RTU
Signal Enhancer	5 mL	RTU
Counter Staining Reagent	5 mL	RTU
Mounting Media	5 mL	RTU
Control Slide	1 slide (Optional)	FFPE
Datasheet	1 Copy	
Manual	1 Copy	

## Storage Instructions

All the reagents are stored at 2-8°C. The kit is stable for 6 months from the date of receipt.

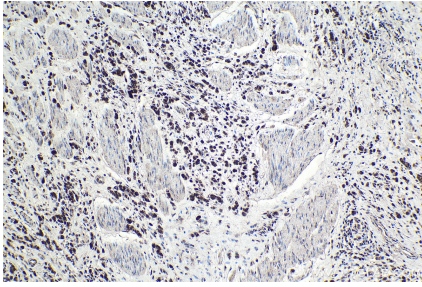
## Background

PPP1R8, also named as ARD1, NIPP1, is a 351 amino acid protein, which has a basic N- and C-terminal and an acidic central domain. PPP1R8 is ubiquitously expressed, with highest levels in heart and skeletal muscle, followed by brain, placenta, lung, liver and pancreas. PPP1R8 has RNA-binding activity but does not cleave RNA and may target PP-1 to RNA-associated substrates and may also be involved in pre-mRNA splicing.

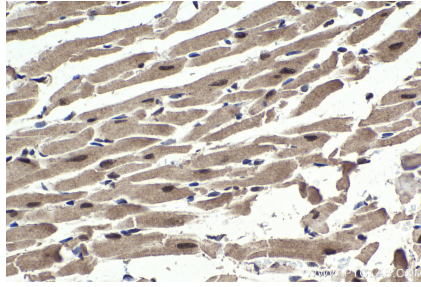
## Synonyms

ARD 1, ARD1, NIPP 1, NIPP1, PPP1R8, PRO2047

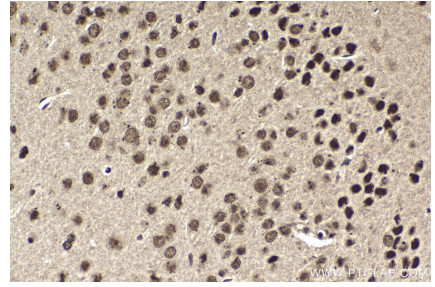
## Selected Validation Data



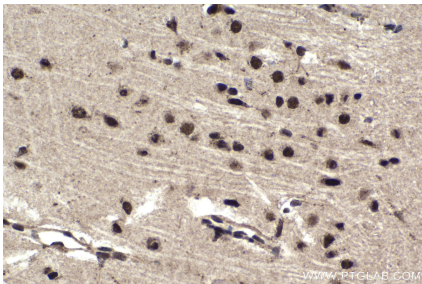
Immunohistochemical analysis of paraffin-embedded human stomach cancer tissue slide using KHC1697 (PPP1R8 IHC Kit).



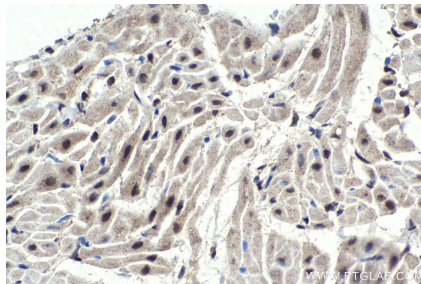
Immunohistochemical analysis of paraffin-embedded mouse heart tissue slide using KHC1697 (PPP1R8 IHC Kit).



Immunohistochemical analysis of paraffin-embedded mouse brain tissue slide using KHC1697 (PPP1R8 IHC Kit).



Immunohistochemical analysis of paraffin-embedded rat brain tissue slide using KHC1697 (PPP1R8 IHC Kit).



Immunohistochemical analysis of paraffin-embedded rat heart tissue slide using KHC1697 (PPP1R8 IHC Kit).