

IHC*easy* CHD3 Ready-To-Use IHC Kit

Catalog Number: **KHC1694**

General Information

Sample type:
FFPE tissue

Cited sample type:

Reactivity:
Human, Mouse, Rat

Cited Reactivity:

Assay type:
Immunohistochemistry

Primary antibody type:
Rabbit Polyclonal

Secondary antibody type:
Polymer-HRP-Goat anti-Rabbit

Kit Component

Component	Size	Concentration
Antigen Retrieval Buffer	100 mL	50×
Washing Buffer	100 mL ×2	20×
Blocking Buffer	5 mL	RTU
Primary Antibody	5 mL	RTU
Secondary Antibody	5 mL	RTU
Chromogen Component A	0.2 mL	RTU
Chromogen Component B	4 mL	RTU
Signal Enhancer	5 mL	RTU
Counter Staining Reagent	5 mL	RTU
Mounting Media	5 mL	RTU
Control Slide	1 slide (Optional)	FFPE
Datasheet	1 Copy	
Manual	1 Copy	

Storage Instructions

All the reagents are stored at 2-8°C. The kit is stable for 6 months from the date of receipt.

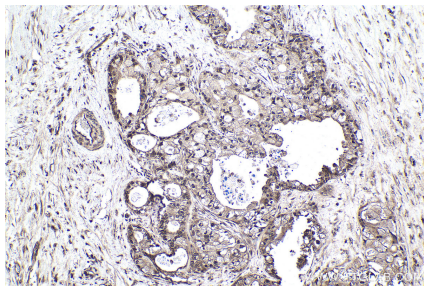
Background

CHD3, also named as Mi2 ALPHA or Zinc finger helicase, is a 2000 amino acid protein, which contains one helicase C-terminal domain, one helicase ATP-binding domain, and two chromo domain. CHD3 localizes in the nucleus and cytoplasm. CHD3 is widely expressed. CHD3 is a component of the histone deacetylase NuRD complex, which participates in the remodeling of chromatin by deacetylating histones. CHD3 is required for anchoring centrosomal pericentric in both interphase and mitosis.

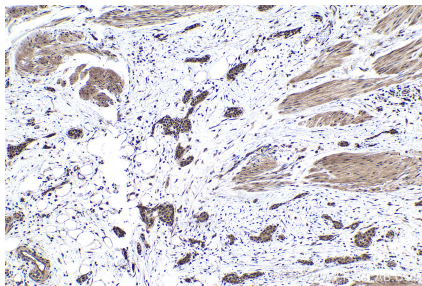
Synonyms

ATP dependent helicase CHD3, CHD 3, CHD3, hZFH, Mi 2a, Mi2 ALPHA, ZFH, Zinc finger helicase

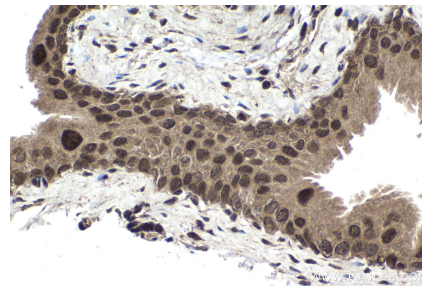
Selected Validation Data



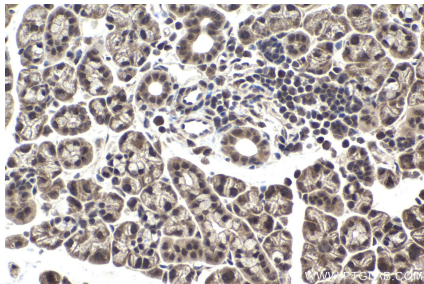
Immunohistochemical analysis of paraffin-embedded human pancreas cancer tissue slide using KHC1694 (CHD3 IHC Kit).



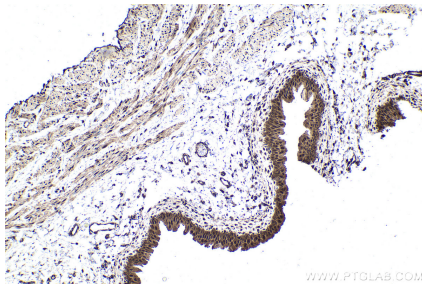
Immunohistochemical analysis of paraffin-embedded human urothelial carcinoma tissue slide using KHC1694 (CHD3 IHC Kit).



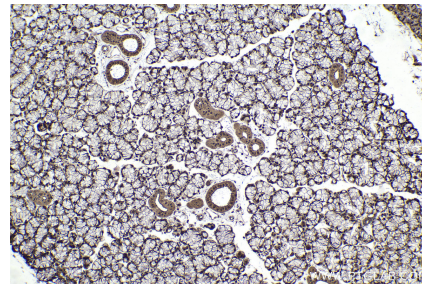
Immunohistochemical analysis of paraffin-embedded mouse bladder tissue slide using KHC1694 (CHD3 IHC Kit).



Immunohistochemical analysis of paraffin-embedded mouse salivary gland tissue slide using KHC1694 (CHD3 IHC Kit).



Immunohistochemical analysis of paraffin-embedded rat bladder tissue slide using KHC1694 (CHD3 IHC Kit).



Immunohistochemical analysis of paraffin-embedded rat salivary gland tissue slide using KHC1694 (CHD3 IHC Kit).