

# IHCeasy<sup>®</sup> SATB1 Ready-To-Use IHC Kit

Catalog Number: KHC1666

## General Information

Sample type:  
FFPE tissue  
Cited sample type:  
Reactivity:  
Human, Mouse, Rat  
Cited Reactivity:

Assay type:  
Immunohistochemistry  
Primary antibody type:  
Rabbit Polyclonal  
Secondary antibody type:  
Polymer-HRP-Goat anti-Rabbit

## Kit Component

Component	Size	Concentration
Antigen Retrieval Buffer	100 mL	50×
Washing Buffer	100 mL ×2	20×
Blocking Buffer	5 mL	RTU
Primary Antibody	5 mL	RTU
Secondary Antibody	5 mL	RTU
Chromogen Component A	0.2 mL	RTU
Chromogen Component B	4 mL	RTU
Signal Enhancer	5 mL	RTU
Counter Staining Reagent	5 mL	RTU
Mounting Media	5 mL	RTU
Control Slide	1 slide (Optional)	FFPE
Datasheet	1 Copy	
Manual	1 Copy	

## Storage Instructions

All the reagents are stored at 2-8°C. The kit is stable for 6 months from the date of receipt.

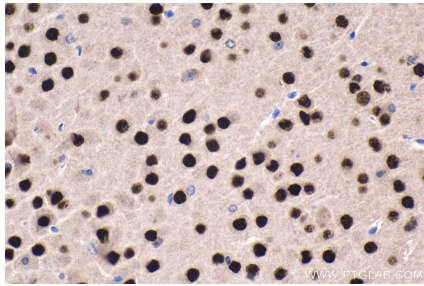
## Background

Epigenetic modifications and dynamic changes in chromatin organization by organizer proteins have recently been shown to play an instrumental role in regulating cancer-promoting genes. Special AT-rich binding protein (SATB1) is a unique type of global regulator that integrates higher-order chromatin organization -with regulation of gene expression. SATB1 is a T cell-enriched transcription factor and a chromatin organizer essential for controlling genes that participate in T-cell development and activation. It regulates gene expression by periodically anchoring matrix attachment regions to the nuclear matrix and directly recruiting chromatin-modifying factors. Depending on its posttranslational modifications, SATB1 activates or represses multiple genes. Its expression is regulated by interleukin-4 (IL4) during T helper-2(Th2) cell differentiation.

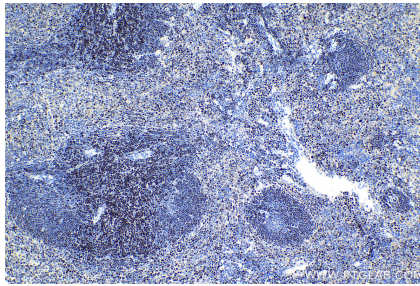
## Synonyms

DNA binding protein SATB1, SATB homeobox 1, SATB1

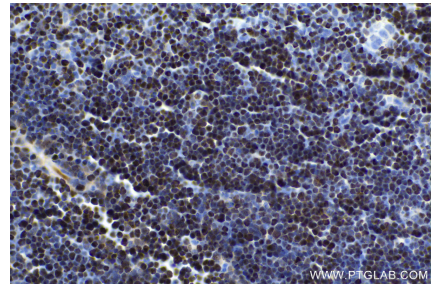
## Selected Validation Data



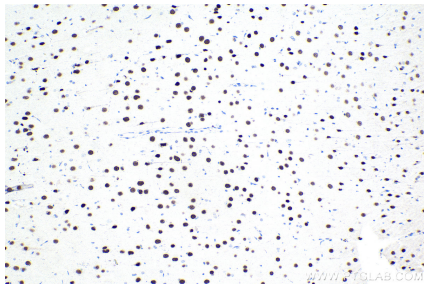
Immunohistochemical analysis of paraffin-embedded mouse brain tissue slide using KHC1666 (SATB1 IHC Kit).



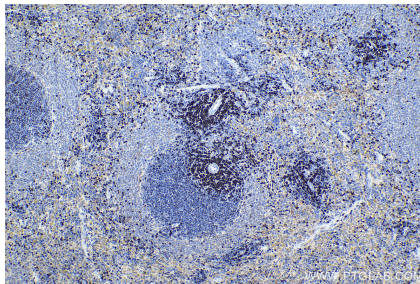
Immunohistochemical analysis of paraffin-embedded mouse spleen tissue slide using KHC1666 (SATB1 IHC Kit).



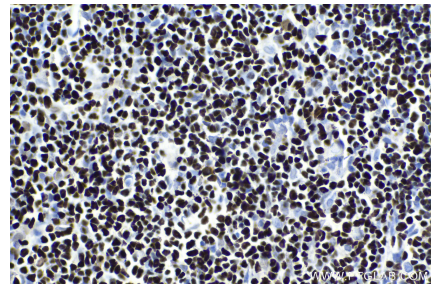
Immunohistochemical analysis of paraffin-embedded mouse thymus tissue slide using KHC1666 (SATB1 IHC Kit).



Immunohistochemical analysis of paraffin-embedded rat brain tissue slide using KHC1666 (SATB1 IHC Kit).



Immunohistochemical analysis of paraffin-embedded rat spleen tissue slide using KHC1666 (SATB1 IHC Kit).



Immunohistochemical analysis of paraffin-embedded rat thymus tissue slide using KHC1666 (SATB1 IHC Kit).