

IHC*easy* TIAL1 Ready-To-Use IHC Kit

Catalog Number: **KHC1662**

General Information

Sample type:
FFPE tissue

Cited sample type:

Reactivity:
Human, Mouse, Rat

Cited Reactivity:

Assay type:
Immunohistochemistry

Primary antibody type:
Mouse Monoclonal

Secondary antibody type:
Polymer-HRP-Goat anti-Mouse

Kit Component

Component	Size	Concentration
Antigen Retrieval Buffer	100 mL	50×
Washing Buffer	100 mL ×2	20×
Blocking Buffer	5 mL	RTU
Primary Antibody	5 mL	RTU
Secondary Antibody	5 mL	RTU
Chromogen Component A	0.2 mL	RTU
Chromogen Component B	4 mL	RTU
Signal Enhancer	5 mL	RTU
Counter Staining Reagent	5 mL	RTU
Mounting Media	5 mL	RTU
Control Slide	1 slide (Optional)	FFPE
Datasheet	1 Copy	
Manual	1 Copy	

Storage Instructions

All the reagents are stored at 2-8°C. The kit is stable for 6 months from the date of receipt.

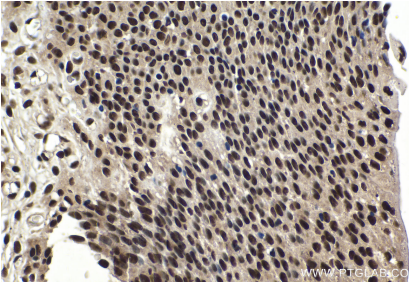
Background

TIAR, also named as TIA 1 related protein, is an RNA-binding protein which is associated with apoptosis. It has been shown that mouse with disrupted TIAR gene show high levels of embryonic lethality. TIAR plays an important role in cytoplasm and nucleus where it can control translation of some specific mRNAs and activate splicing of exons with weak 5-splice sites.

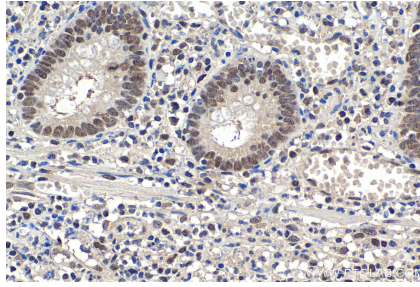
Synonyms

Nucleolysin TIAR, TCBP, TIA 1 related protein, TIAL1, TIAR

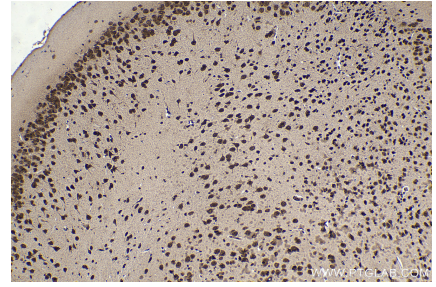
Selected Validation Data



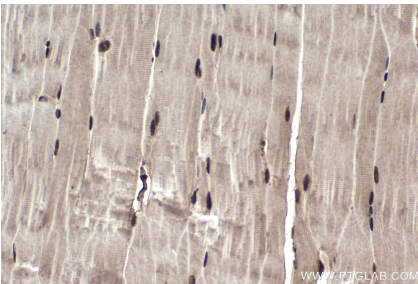
Immunohistochemical analysis of paraffin-embedded human urothelial carcinoma tissue slide using KHC1662 (TIAL1 IHC Kit).



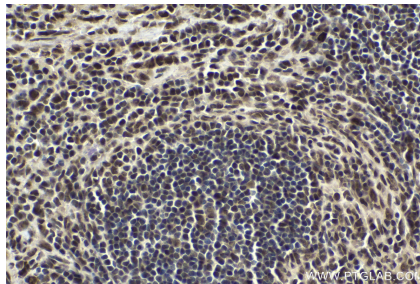
Immunohistochemical analysis of paraffin-embedded human appendicitis tissue slide using KHC1662 (TIAL1 IHC Kit).



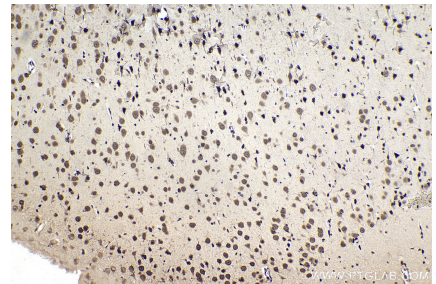
Immunohistochemical analysis of paraffin-embedded mouse brain tissue slide using KHC1662 (TIAL1 IHC Kit).



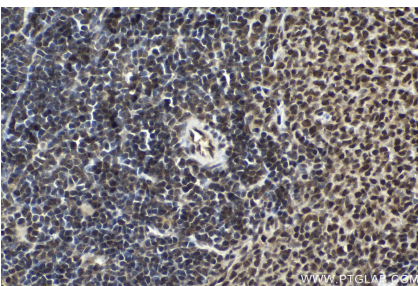
Immunohistochemical analysis of paraffin-embedded mouse skeletal muscle tissue slide using KHC1662 (TIAL1 IHC Kit).



Immunohistochemical analysis of paraffin-embedded mouse spleen tissue slide using KHC1662 (TIAL1 IHC Kit).



Immunohistochemical analysis of paraffin-embedded rat brain tissue slide using KHC1662 (TIAL1 IHC Kit).



Immunohistochemical analysis of paraffin-embedded rat spleen tissue slide using KHC1662 (TIAL1 IHC Kit).