

IHC*easy* RAD23B Ready-To-Use IHC Kit

Catalog Number: **KHC1629**

General Information

Sample type:
FFPE tissue
Cited sample type:
Reactivity:
Human, Mouse, Rat
Cited Reactivity:

Assay type:
Immunohistochemistry
Primary antibody type:
Mouse Monoclonal
Secondary antibody type:
Polymer-HRP-Goat anti-Mouse

Kit Component

Component	Size	Concentration
Antigen Retrieval Buffer	100 mL	50×
Washing Buffer	100 mL ×2	20×
Blocking Buffer	5 mL	RTU
Primary Antibody	5 mL	RTU
Secondary Antibody	5 mL	RTU
Chromogen Component A	0.2 mL	RTU
Chromogen Component B	4 mL	RTU
Signal Enhancer	5 mL	RTU
Counter Staining Reagent	5 mL	RTU
Mounting Media	5 mL	RTU
Control Slide	1 slide (Optional)	FFPE
Datasheet	1 Copy	
Manual	1 Copy	

Storage Instructions

All the reagents are stored at 2-8°C. The kit is stable for 6 months from the date of receipt.

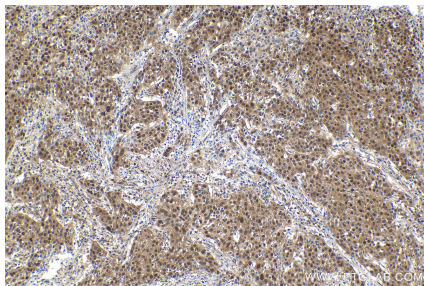
Background

RAD23B, also named as p58, hHR23B and HR23B, belongs to the RAD23 family. It plays a central role both in proteosomal degradation of misfolded proteins and DNA repair. RAD23B is a central component of a complex required to couple deglycosylation and proteasome-mediated degradation of misfolded proteins in the endoplasmic reticulum that are retrotranslocated in the cytosol. Involved in DNA excision repair by stabilizing XPC protein. It may play a part in DNA damage recognition and/or in altering chromatin structure to allow access by damage-processing enzymes.

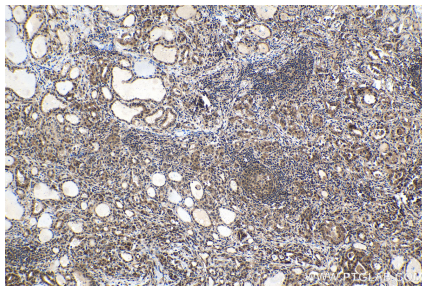
Synonyms

HHR23B, HR23B, P58, RAD23B

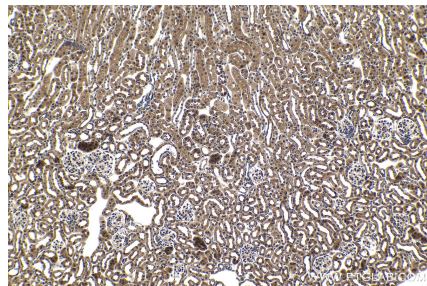
Selected Validation Data



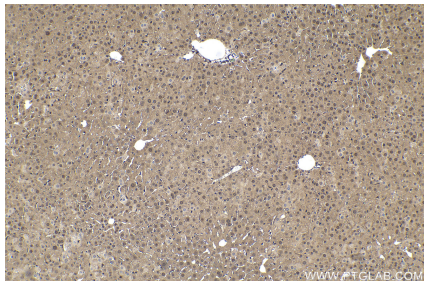
Immunohistochemical analysis of paraffin-embedded human cervical cancer tissue slide using KHC1629 (RAD23B IHC Kit).



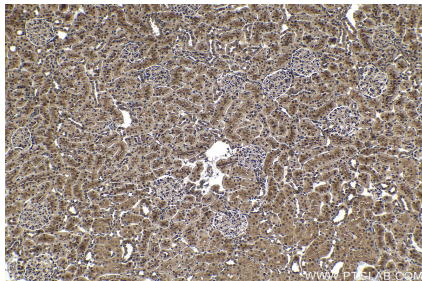
Immunohistochemical analysis of paraffin-embedded human thyroid cancer tissue slide using KHC1629 (RAD23B IHC Kit).



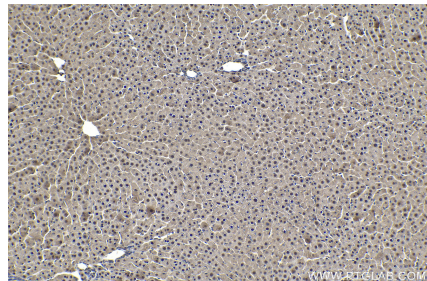
Immunohistochemical analysis of paraffin-embedded mouse kidney tissue slide using KHC1629 (RAD23B IHC Kit).



Immunohistochemical analysis of paraffin-embedded mouse liver tissue slide using KHC1629 (RAD23B IHC Kit).



Immunohistochemical analysis of paraffin-embedded rat kidney tissue slide using KHC1629 (RAD23B IHC Kit).



Immunohistochemical analysis of paraffin-embedded rat liver tissue slide using KHC1629 (RAD23B IHC Kit).