

# IHC*easy* PRKAA2 Ready-To-Use IHC Kit

Catalog Number: **KHC1628**

## General Information

Sample type:  
FFPE tissue  
Cited sample type:  
Reactivity:  
Human, Mouse, Rat  
Cited Reactivity:

Assay type:  
Immunohistochemistry  
Primary antibody type:  
Rabbit Polyclonal  
Secondary antibody type:  
Polymer-HRP-Goat anti-Rabbit

## Kit Component

Component	Size	Concentration
Antigen Retrieval Buffer	100 mL	50×
Washing Buffer	100 mL ×2	20×
Blocking Buffer	5 mL	RTU
Primary Antibody	5 mL	RTU
Secondary Antibody	5 mL	RTU
Chromogen Component A	0.2 mL	RTU
Chromogen Component B	4 mL	RTU
Signal Enhancer	5 mL	RTU
Counter Staining Reagent	5 mL	RTU
Mounting Media	5 mL	RTU
Control Slide	1 slide (Optional)	FFPE
Datasheet	1 Copy	
Manual	1 Copy	

## Storage Instructions

All the reagents are stored at 2-8°C. The kit is stable for 6 months from the date of receipt.

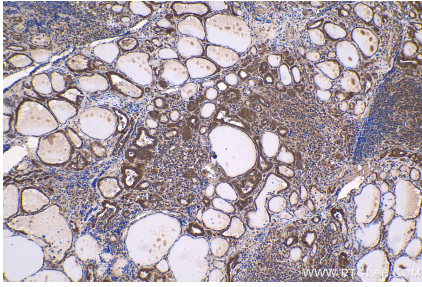
## Background

PRKAA2 (protein kinase, AMP-activated, alpha 2 catalytic subunit), also named as AMPKA2, AMPK, PRKAA, AMPK2, belongs to the CAMK Ser/Thr protein kinase family and SNF1 subfamily. PRKAA2 is an  $\alpha$   $\beta$   $\gamma$  heterotrimer that is activated by low cellular energy status, such as decreases in both the ATP/AMP ratio and the phosphocreatine content and it is a glycogen synthase kinase, phosphorylating Ser7 at the NH2 terminus, which decreases glycogen synthase activity. The protein can be ubiquitinated.

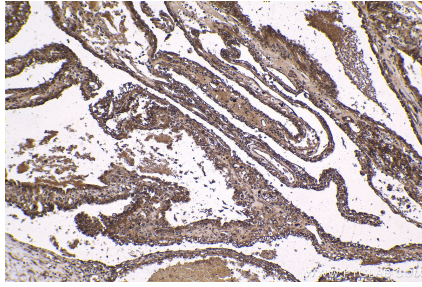
## Synonyms

AMPK, AMPK alpha 2, AMPK subunit alpha 2, AMPK2, AMPKA2, AMPK  $\alpha$  2, PRKAA, PRKAA2

## Selected Validation Data



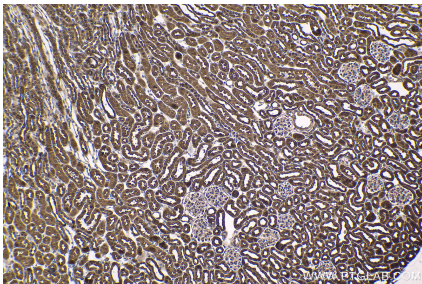
Immunohistochemical analysis of paraffin-embedded human thyroid cancer tissue slide using KHC1628 (PRKAA2 IHC Kit).



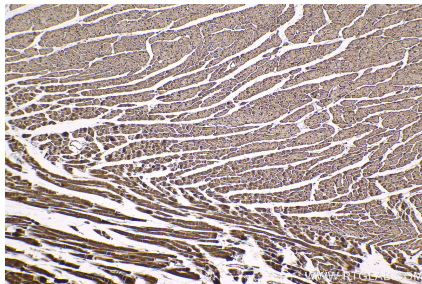
Immunohistochemical analysis of paraffin-embedded human renal cell carcinoma tissue slide using KHC1628 (PRKAA2 IHC Kit).



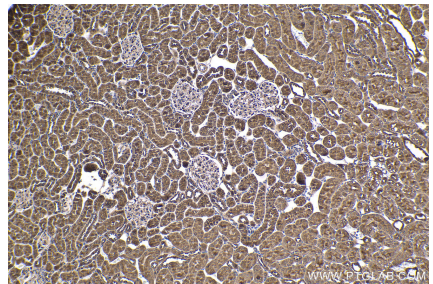
Immunohistochemical analysis of paraffin-embedded mouse cerebellum tissue slide using KHC1628 (PRKAA2 IHC Kit).



Immunohistochemical analysis of paraffin-embedded mouse kidney tissue slide using KHC1628 (PRKAA2 IHC Kit).



Immunohistochemical analysis of paraffin-embedded rat heart tissue slide using KHC1628 (PRKAA2 IHC Kit).



Immunohistochemical analysis of paraffin-embedded rat kidney tissue slide using KHC1628 (PRKAA2 IHC Kit).