

# IHC*easy* RXRG Ready-To-Use IHC Kit

Catalog Number: **KHC1611**

## General Information

**Sample type:**  
FFPE tissue

**Cited sample type:**

**Reactivity:**  
Human, Mouse, Rat

**Cited Reactivity:**

**Assay type:**  
Immunohistochemistry

**Primary antibody type:**  
Rabbit Polyclonal

**Secondary antibody type:**  
Polymer-HRP-Goat anti-Rabbit

## Kit Component

Component	Size	Concentration
Antigen Retrieval Buffer	100 mL	50×
Washing Buffer	100 mL ×2	20×
Blocking Buffer	5 mL	RTU
Primary Antibody	5 mL	RTU
Secondary Antibody	5 mL	RTU
Chromogen Component A	0.2 mL	RTU
Chromogen Component B	4 mL	RTU
Signal Enhancer	5 mL	RTU
Counter Staining Reagent	5 mL	RTU
Mounting Media	5 mL	RTU
Control Slide	1 slide (Optional)	FFPE
Datasheet	1 Copy	
Manual	1 Copy	

## Storage Instructions

All the reagents are stored at 2-8°C. The kit is stable for 6 months from the date of receipt.

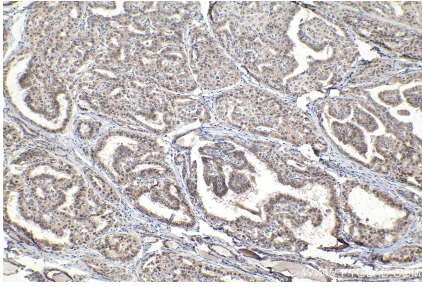
## Background

RXRG, also named as, Retinoic acid receptor RXR-gamma, is a 463 amino acid protein, which localize in the nucleus and may form homodimer. Retinoic acid receptors bind as heterodimers to their target response elements in response to their ligands, all-trans or 9-cis retinoic acid, and regulate gene expression in various biological processes. The RAR/RXR heterodimers bind to the retinoic acid response elements (RARE) composed of tandem 5'-AGGTCA-3' sites known as DR1-DR5.

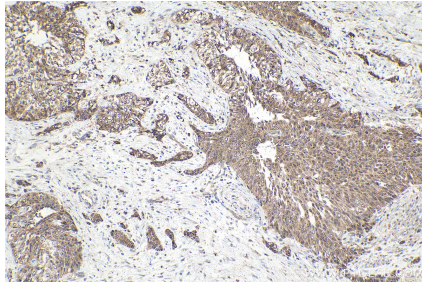
## Synonyms

NR2B3, Retinoid X receptor gamma, retinoid X receptor, gamma, RXRC, RXRG

## Selected Validation Data



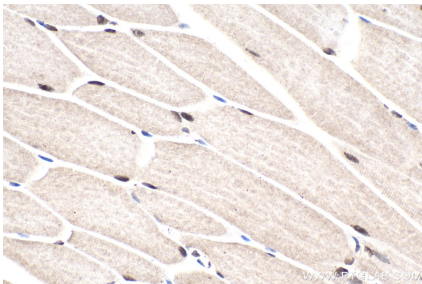
Immunohistochemical analysis of paraffin-embedded human thyroid cancer tissue slide using KHC1611 (RXRG IHC Kit).



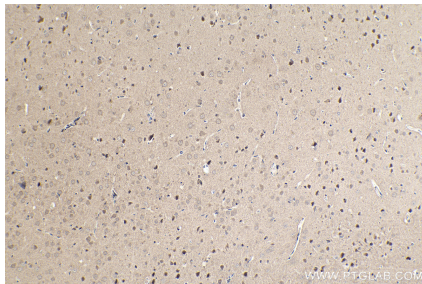
Immunohistochemical analysis of paraffin-embedded human urothelial carcinoma tissue slide using KHC1611 (RXRG IHC Kit).



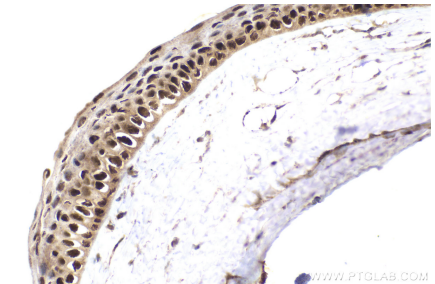
Immunohistochemical analysis of paraffin-embedded mouse eye tissue slide using KHC1611 (RXRG IHC Kit).



Immunohistochemical analysis of paraffin-embedded mouse skeletal muscle tissue slide using KHC1611 (RXRG IHC Kit).



Immunohistochemical analysis of paraffin-embedded rat brain tissue slide using KHC1611 (RXRG IHC Kit).



Immunohistochemical analysis of paraffin-embedded rat eye tissue slide using KHC1611 (RXRG IHC Kit).