

IHC*easy* UBE3A Ready-To-Use IHC Kit

Catalog Number: **KHC1602**

General Information

Sample type:
FFPE tissue
Cited sample type:
Reactivity:
Human, Mouse, Rat
Cited Reactivity:

Assay type:
Immunohistochemistry
Primary antibody type:
Rabbit Polyclonal
Secondary antibody type:
Polymer-HRP-Goat anti-Rabbit

Kit Component

Component	Size	Concentration
Antigen Retrieval Buffer	100 mL	50×
Washing Buffer	100 mL ×2	20×
Blocking Buffer	5 mL	RTU
Primary Antibody	5 mL	RTU
Secondary Antibody	5 mL	RTU
Chromogen Component A	0.2 mL	RTU
Chromogen Component B	4 mL	RTU
Signal Enhancer	5 mL	RTU
Counter Staining Reagent	5 mL	RTU
Mounting Media	5 mL	RTU
Control Slide	1 slide (Optional)	FFPE
Datasheet	1 Copy	
Manual	1 Copy	

Storage Instructions

All the reagents are stored at 2-8°C. The kit is stable for 6 months from the date of receipt.

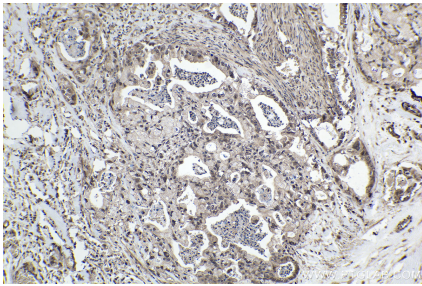
Background

UBE3A (Ubiquitin-protein ligase E3A) is also named as E6AP, EPVE6AP, HPVE6A and belongs to the E3 ubiquitin protein ligase family. It functions as both an E3 ligase in the ubiquitin proteasome pathway and as a transcriptional coactivator. It is also initially identified as a cellular protein that mediates in vitro association of the human papillomavirus E6 protein with p53, leading to the ubiquitin-dependent degradation of p53. Defects in UBE3A are a cause of Angelman syndrome (AS).

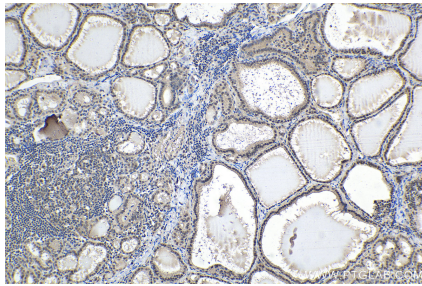
Synonyms

ANCR, AS, E6 AP, E6AP, E6AP ubiquitin protein ligase, EPVE6AP, HPVE6A, UBE3A, ubiquitin protein ligase E3A

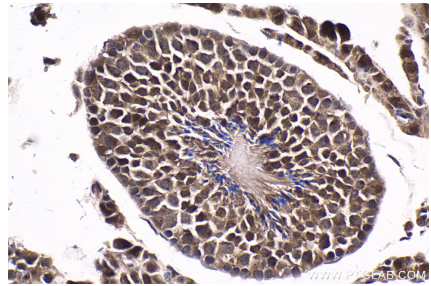
Selected Validation Data



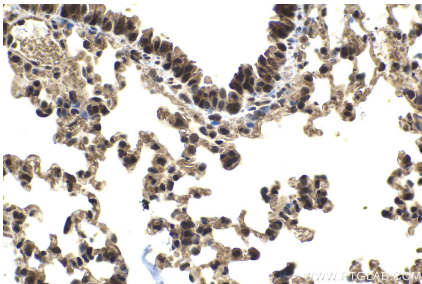
Immunohistochemical analysis of paraffin-embedded human pancreas cancer tissue slide using KHC1602 (UBE3A IHC Kit).



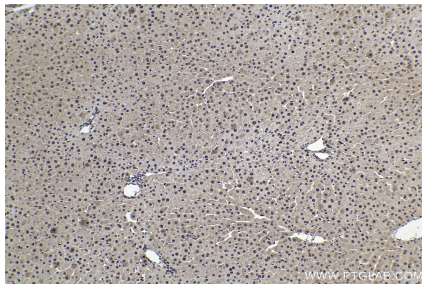
Immunohistochemical analysis of paraffin-embedded human thyroid cancer tissue slide using KHC1602 (UBE3A IHC Kit).



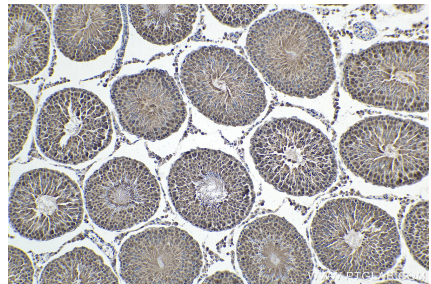
Immunohistochemical analysis of paraffin-embedded mouse testis tissue slide using KHC1602 (UBE3A IHC Kit).



Immunohistochemical analysis of paraffin-embedded mouse lung tissue slide using KHC1602 (UBE3A IHC Kit).



Immunohistochemical analysis of paraffin-embedded rat liver tissue slide using KHC1602 (UBE3A IHC Kit).



Immunohistochemical analysis of paraffin-embedded rat testis tissue slide using KHC1602 (UBE3A IHC Kit).