

IHCeasy[®] GATA2 Ready-To-Use IHC Kit

Catalog Number: **KHC1601**

General Information

Sample type:
FFPE tissue
Cited sample type:
Reactivity:
Human, Mouse, Rat
Cited Reactivity:

Assay type:
Immunohistochemistry
Primary antibody type:
Mouse Monoclonal
Secondary antibody type:
Polymer-HRP-Goat anti-Mouse

Kit Component

| Component | Size | Concentration |
|--------------------------|--------------------|---------------|
| Antigen Retrieval Buffer | 100 mL | 50× |
| Washing Buffer | 100 mL ×2 | 20× |
| Blocking Buffer | 5 mL | RTU |
| Primary Antibody | 5 mL | RTU |
| Secondary Antibody | 5 mL | RTU |
| Chromogen Component A | 0.2 mL | RTU |
| Chromogen Component B | 4 mL | RTU |
| Signal Enhancer | 5 mL | RTU |
| Counter Staining Reagent | 5 mL | RTU |
| Mounting Media | 5 mL | RTU |
| Control Slide | 1 slide (Optional) | FFPE |
| Datasheet | 1 Copy | |
| Manual | 1 Copy | |

Storage Instructions

All the reagents are stored at 2-8°C. The kit is stable for 6 months from the date of receipt.

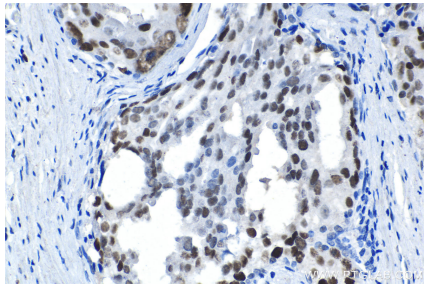
Background

GATA2 is a member of GATA family of transcription factors that contains zinc fingers in DNA binding domain. GATA2 acts as a transcriptional activator that regulates endothelin-1 expression in endothelial cells. Together with GATA3, GATA2 regulates adipocyte differentiation through molecular control of the preadipocyte-adipocyte transition. It also affects the activity of Rho inhibitor p190RhoGAP that controls capillary network formation in vitro and retinal angiogenesis in vivo.

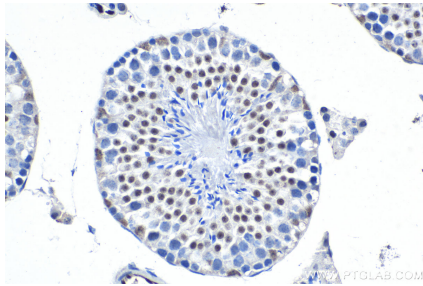
Synonyms

FLJ45948, GATA binding protein 2, GATA2, NFE1B

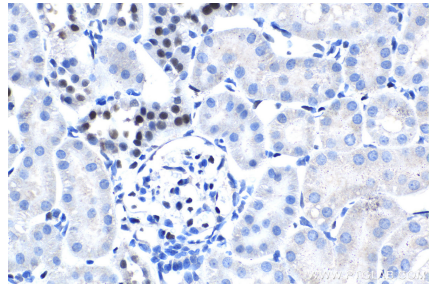
Selected Validation Data



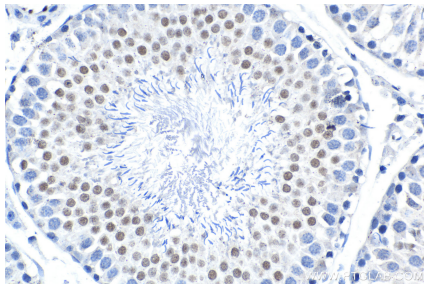
Immunohistochemical analysis of paraffin-embedded human prostate cancer tissue slide using KHC1601 (GATA2 IHC Kit).



Immunohistochemical analysis of paraffin-embedded mouse testis tissue slide using KHC1601 (GATA2 IHC Kit).



Immunohistochemical analysis of paraffin-embedded rat kidney tissue slide using KHC1601 (GATA2 IHC Kit).



Immunohistochemical analysis of paraffin-embedded rat testis tissue slide using KHC1601 (GATA2 IHC Kit).