

IHCeasy[®] EIF4A3 Ready-To-Use IHC Kit

Catalog Number: **KHC1588**

General Information

Sample type:
FFPE tissue
Cited sample type:
Reactivity:
Human, Mouse, Rat
Cited Reactivity:

Assay type:
Immunohistochemistry
Primary antibody type:
Mouse Monoclonal
Secondary antibody type:
Polymer-HRP-Goat anti-Mouse

Kit Component

Component	Size	Concentration
Antigen Retrieval Buffer	100 mL	50×
Washing Buffer	100 mL ×2	20×
Blocking Buffer	5 mL	RTU
Primary Antibody	5 mL	RTU
Secondary Antibody	5 mL	RTU
Chromogen Component A	0.2 mL	RTU
Chromogen Component B	4 mL	RTU
Signal Enhancer	5 mL	RTU
Counter Staining Reagent	5 mL	RTU
Mounting Media	5 mL	RTU
Control Slide	1 slide (Optional)	FFPE
Datasheet	1 Copy	
Manual	1 Copy	

Storage Instructions

All the reagents are stored at 2-8°C. The kit is stable for 6 months from the date of receipt.

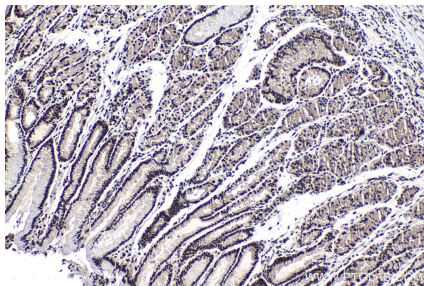
Background

EIF4A3 is a component of the exon junction complex (EJC), which assembles near exon-exon junctions of mRNAs as a result of splicing. EJC proteins involves in postsplicing events, including mRNA export, cytoplasmic localization, and nonsense-mediated decay. Its RNA-dependent ATPase and RNA-helicase activities are induced by CASC3, but abolished in presence of the MAGOH/RBM8A heterodimer, thereby trapping the ATP-bound EJC core onto spliced mRNA in a stable conformation. Besides, it involved in translational enhancement of spliced mRNAs after formation of the 80S ribosome complex and binds spliced mRNA in sequence-independent manner, 20-24 nucleotides upstream of mRNA exon-exon junctions.

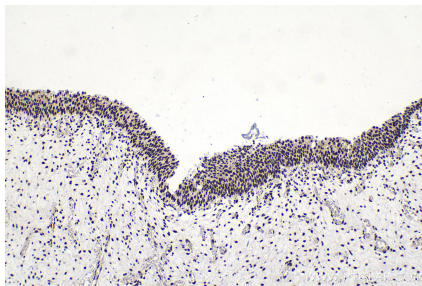
Synonyms

DDX48, DEAD box protein 48, eIF 4A III, eIF4A III, EIF4A3, eIF4AIII, hNMP 265, hNMP265, KIAA0111, Nuclear matrix protein 265, NUK 34

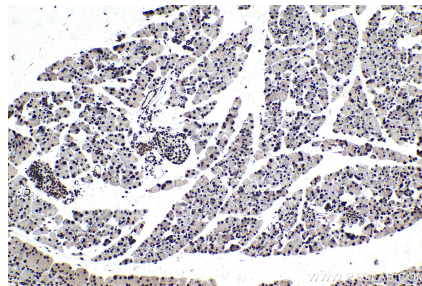
Selected Validation Data



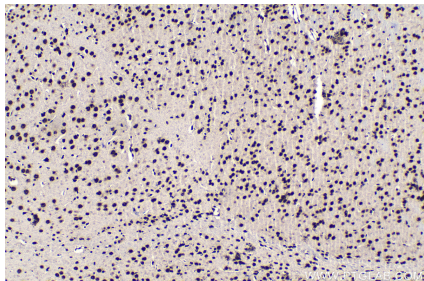
Immunohistochemical analysis of paraffin-embedded human stomach cancer tissue slide using KHC1588 (EIF4A3 IHC Kit).



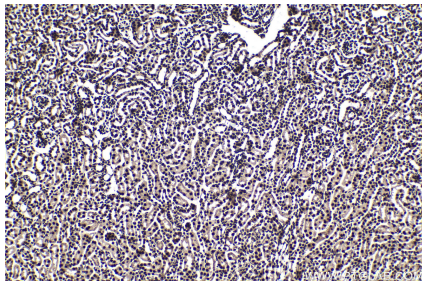
Immunohistochemical analysis of paraffin-embedded human urothelial carcinoma tissue slide using KHC1588 (EIF4A3 IHC Kit).



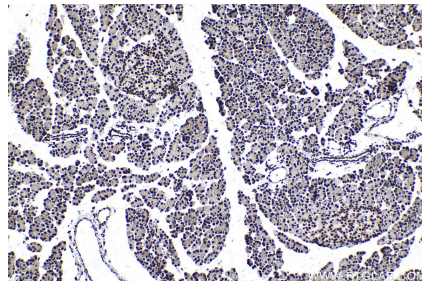
Immunohistochemical analysis of paraffin-embedded mouse pancreas tissue slide using KHC1588 (EIF4A3 IHC Kit).



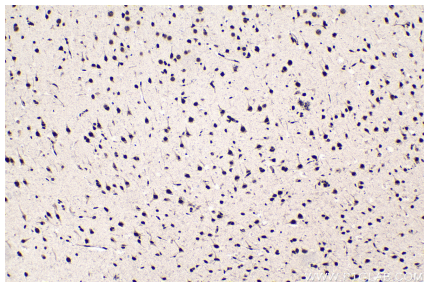
Immunohistochemical analysis of paraffin-embedded mouse brain tissue slide using KHC1588 (EIF4A3 IHC Kit).



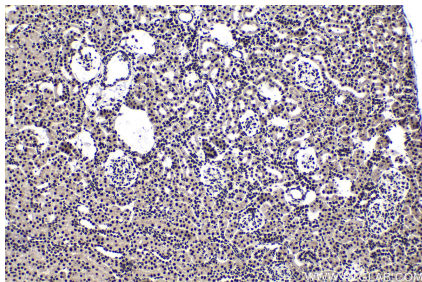
Immunohistochemical analysis of paraffin-embedded mouse kidney tissue slide using KHC1588 (EIF4A3 IHC Kit).



Immunohistochemical analysis of paraffin-embedded rat pancreas tissue slide using KHC1588 (EIF4A3 IHC Kit).



Immunohistochemical analysis of paraffin-embedded rat brain tissue slide using KHC1588 (EIF4A3 IHC Kit).



Immunohistochemical analysis of paraffin-embedded rat kidney tissue slide using KHC1588 (EIF4A3 IHC Kit).