

IHCeasy[®] GCK Ready-To-Use IHC Kit

Catalog Number: **KHC1584**

General Information

Sample type:
FFPE tissue
Cited sample type:
Reactivity:
Human, Mouse, Rat
Cited Reactivity:

Assay type:
Immunohistochemistry
Primary antibody type:
Rabbit Polyclonal
Secondary antibody type:
Polymer-HRP-Goat anti-Rabbit

Kit Component

Component	Size	Concentration
Antigen Retrieval Buffer	100 mL	50×
Washing Buffer	100 mL ×2	20×
Blocking Buffer	5 mL	RTU
Primary Antibody	5 mL	RTU
Secondary Antibody	5 mL	RTU
Chromogen Component A	0.2 mL	RTU
Chromogen Component B	4 mL	RTU
Signal Enhancer	5 mL	RTU
Counter Staining Reagent	5 mL	RTU
Mounting Media	5 mL	RTU
Control Slide	1 slide (Optional)	FFPE
Datasheet	1 Copy	
Manual	1 Copy	

Storage Instructions

All the reagents are stored at 2-8°C. The kit is stable for 6 months from the date of receipt.

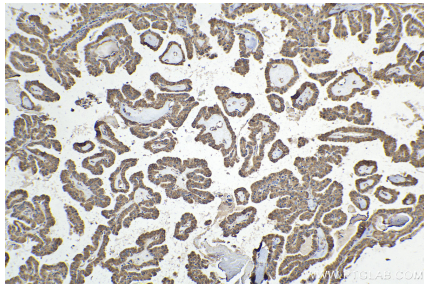
Background

Glucokinase (GCK) is a structurally and functionally unique member of hexokinase family. It is expressed only in mammalian liver and pancreatic islet beta cells. Because of its unique functional characteristics, the enzyme plays an important regulatory role in glucose metabolism. The rate of glucose metabolism in liver and pancreas is a function of the activity of the enzyme. Moreover, GCK has been found to have relationship with diabetes. Defects in GCK are the cause of maturity-onset diabetes of the young type 2 (MODY2) and familial hyperinsulinemic hypoglycemia type 3 (HHF3).

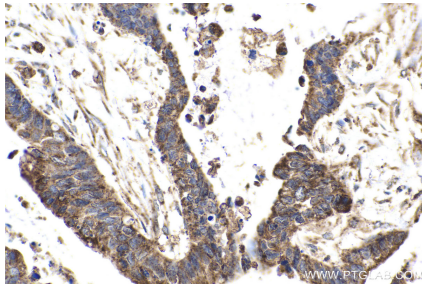
Synonyms

GCK, GK, GLK, Glucokinase, glucokinase (hexokinase 4), Hexokinase 4, Hexokinase D, Hexokinase type IV, HHF3, HK IV, HK4, HKIV, HXKP, MODY2

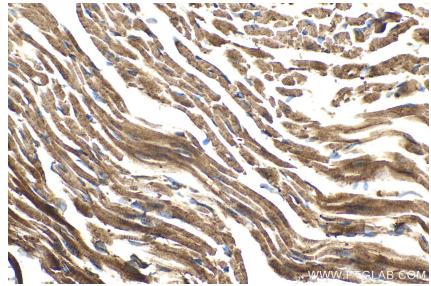
Selected Validation Data



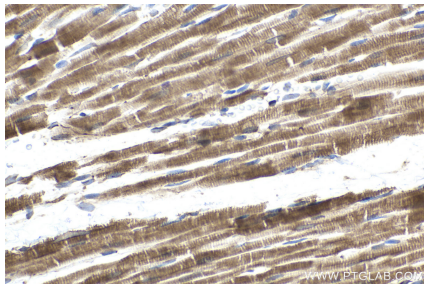
Immunohistochemical analysis of paraffin-embedded human thyroid cancer tissue slide using KHC1584 (GCK IHC Kit).



Immunohistochemical analysis of paraffin-embedded human urothelial carcinoma tissue slide using KHC1584 (GCK IHC Kit).



Immunohistochemical analysis of paraffin-embedded mouse heart tissue slide using KHC1584 (GCK IHC Kit).



Immunohistochemical analysis of paraffin-embedded rat heart tissue slide using KHC1584 (GCK IHC Kit).