

IHC*easy* PSMB9 Ready-To-Use IHC Kit

Catalog Number: **KHC1570**

General Information

Sample type:
FFPE tissue
Cited sample type:
Reactivity:
Human, Mouse, Rat
Cited Reactivity:

Assay type:
Immunohistochemistry
Primary antibody type:
Mouse Monoclonal
Secondary antibody type:
Polymer-HRP-Goat anti-Mouse

Kit Component

Component	Size	Concentration
Antigen Retrieval Buffer	100 mL	50×
Washing Buffer	100 mL ×2	20×
Blocking Buffer	5 mL	RTU
Primary Antibody	5 mL	RTU
Secondary Antibody	5 mL	RTU
Chromogen Component A	0.2 mL	RTU
Chromogen Component B	4 mL	RTU
Signal Enhancer	5 mL	RTU
Counter Staining Reagent	5 mL	RTU
Mounting Media	5 mL	RTU
Control Slide	1 slide (Optional)	FFPE
Datasheet	1 Copy	
Manual	1 Copy	

Storage Instructions

All the reagents are stored at 2-8°C. The kit is stable for 6 months from the date of receipt.

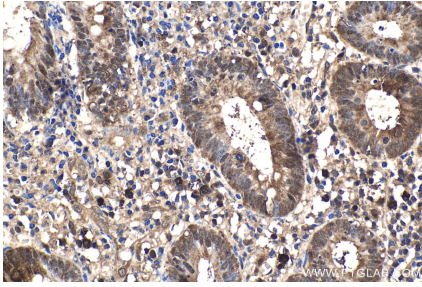
Background

PSMB9, also named as LMP2, PSMB6i and RING12, belongs to the peptidase T1B family. The proteasome is a multicatalytic proteinase complex which is characterized by its ability to cleave peptides with Arg, Phe, Tyr, Leu, and Glu adjacent to the leaving group at neutral or slightly basic pH. Replacement of PSMB6 by PSMB9 increases the capacity of the immunoproteasome to cleave model peptides after hydrophobic and basic residues. High expression of PSMB9 associated with the poor prognosis of patients with NPC.

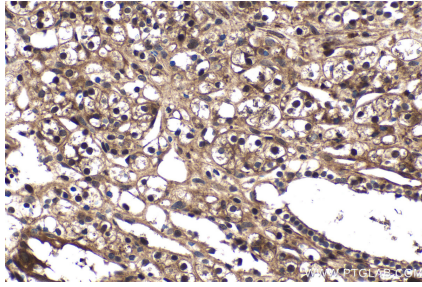
Synonyms

beta1i, LMP2, Low molecular mass protein 2, Macropain chain 7, Proteasome chain 7, Proteasome subunit beta 1i, Proteasome subunit beta type 9, PSMB6i, PSMB9, RING12

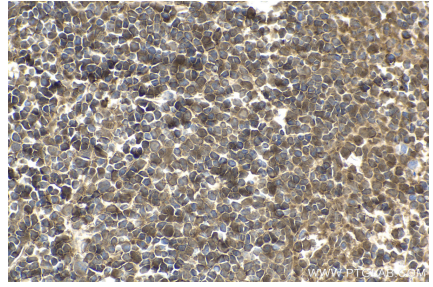
Selected Validation Data



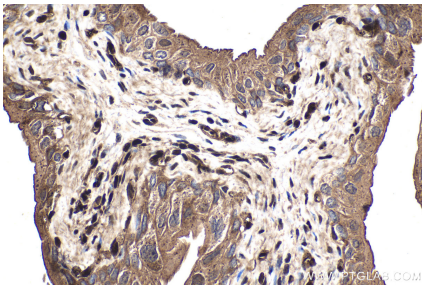
Immunohistochemical analysis of paraffin-embedded human appendicitis tissue slide using KHC1570 (PSMB9 IHC Kit).



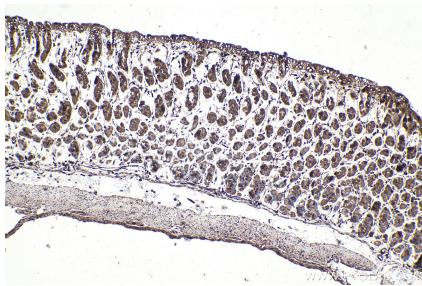
Immunohistochemical analysis of paraffin-embedded human renal cell carcinoma tissue slide using KHC1570 (PSMB9 IHC Kit).



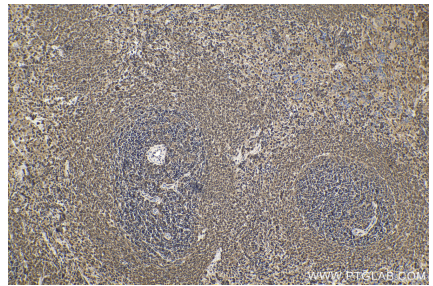
Immunohistochemical analysis of paraffin-embedded mouse spleen tissue slide using KHC1570 (PSMB9 IHC Kit).



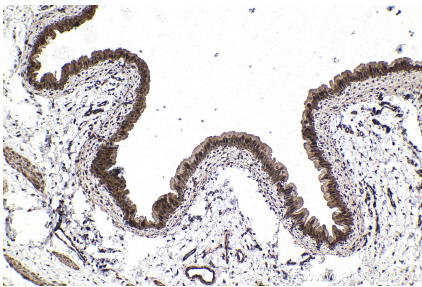
Immunohistochemical analysis of paraffin-embedded mouse bladder tissue slide using KHC1570 (PSMB9 IHC Kit).



Immunohistochemical analysis of paraffin-embedded mouse stomach tissue slide using KHC1570 (PSMB9 IHC Kit).



Immunohistochemical analysis of paraffin-embedded rat spleen tissue slide using KHC1570 (PSMB9 IHC Kit).



Immunohistochemical analysis of paraffin-embedded rat bladder tissue slide using KHC1570 (PSMB9 IHC Kit).