

# IHC*easy* NELFE Ready-To-Use IHC Kit

Catalog Number: **KHC1542**

## General Information

Sample type:  
FFPE tissue  
Cited sample type:  
Reactivity:  
Human, Mouse, Rat  
Cited Reactivity:

Assay type:  
Immunohistochemistry  
Primary antibody type:  
Rabbit Polyclonal  
Secondary antibody type:  
Polymer-HRP-Goat anti-Rabbit

## Kit Component

Component	Size	Concentration
Antigen Retrieval Buffer	100 mL	50×
Washing Buffer	100 mL ×2	20×
Blocking Buffer	5 mL	RTU
Primary Antibody	5 mL	RTU
Secondary Antibody	5 mL	RTU
Chromogen Component A	0.2 mL	RTU
Chromogen Component B	4 mL	RTU
Signal Enhancer	5 mL	RTU
Counter Staining Reagent	5 mL	RTU
Mounting Media	5 mL	RTU
Control Slide	1 slide (Optional)	FFPE
Datasheet	1 Copy	
Manual	1 Copy	

## Storage Instructions

All the reagents are stored at 2-8°C. The kit is stable for 6 months from the date of receipt.

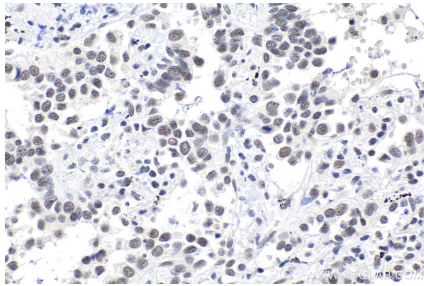
## Background

RDBP, also named NELF-E and RD, belongs to the RRM NELF-E family. It is an essential component of the NELF complex which is a complex that negatively regulates the elongation of transcription by RNA polymerase II. The NELF complex, a complex acts via an association with the DSIF complex and causes transcriptional pausing, is counteracted by the P-TEFb kinase complex. RDBP was recently found implicated in RNA polymerase II pausing by association with Hsp90.

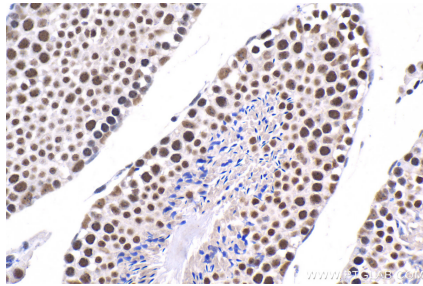
## Synonyms

D6S45, Negative elongation factor E, NELF E, NELFE, RD, RD RNA binding protein, RDBP, RDP, RNA binding protein RD

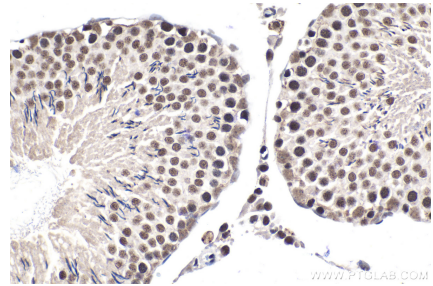
## Selected Validation Data



Immunohistochemical analysis of paraffin-embedded human lung cancer tissue slide using KHC1542 (NELFE IHC Kit).



Immunohistochemical analysis of paraffin-embedded mouse testis tissue slide using KHC1542 (NELFE IHC Kit).



Immunohistochemical analysis of paraffin-embedded rat testis tissue slide using KHC1542 (NELFE IHC Kit).