

IHC*easy* PSMC3 Ready-To-Use IHC Kit

Catalog Number: **KHC1541**

General Information

Sample type:
FFPE tissue
Cited sample type:
Reactivity:
Human, Mouse
Cited Reactivity:

Assay type:
Immunohistochemistry
Primary antibody type:
Rabbit Polyclonal
Secondary antibody type:
Polymer-HRP-Goat anti-Rabbit

Kit Component

Component	Size	Concentration
Antigen Retrieval Buffer	100 mL	50×
Washing Buffer	100 mL ×2	20×
Blocking Buffer	5 mL	RTU
Primary Antibody	5 mL	RTU
Secondary Antibody	5 mL	RTU
Chromogen Component A	0.2 mL	RTU
Chromogen Component B	4 mL	RTU
Signal Enhancer	5 mL	RTU
Counter Staining Reagent	5 mL	RTU
Mounting Media	5 mL	RTU
Control Slide	1 slide (Optional)	FFPE
Datasheet	1 Copy	
Manual	1 Copy	

Storage Instructions

All the reagents are stored at 2-8°C. The kit is stable for 6 months from the date of receipt.

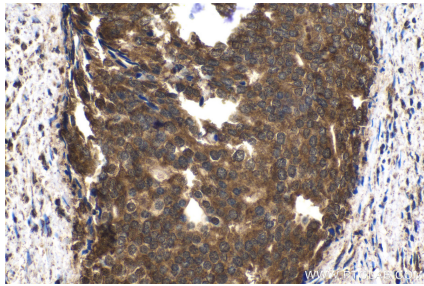
Background

PSMC3(26S protease regulatory subunit 6A) is also named as TBP1, Proteasome 26S subunit ATPase 3 and belongs to the AAA ATPase family. The 26S protease is involved in the ATP-dependent degradation of ubiquitinated proteins. It is a multifunctional protein, component of the regulatory subunit of the proteasome, involved in different cellular processes.

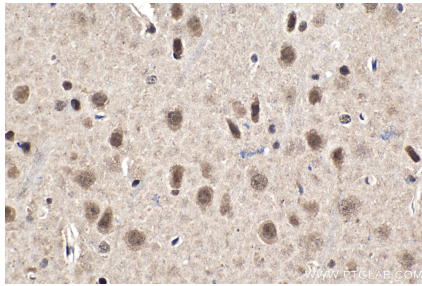
Synonyms

Proteasome subunit P50, PSMC3, Tat binding protein 1, TBP 1, TBP1

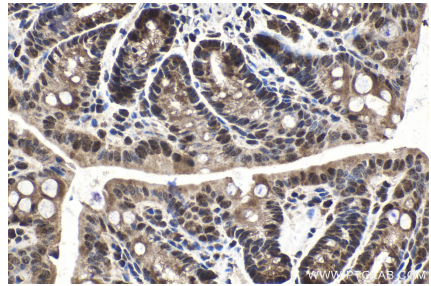
Selected Validation Data



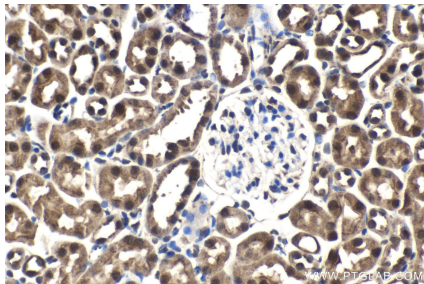
Immunohistochemical analysis of paraffin-embedded human prostate cancer tissue slide using KHC1541 (PSMC3 IHC Kit).



Immunohistochemical analysis of paraffin-embedded mouse brain tissue slide using KHC1541 (PSMC3 IHC Kit).



Immunohistochemical analysis of paraffin-embedded mouse colon tissue slide using KHC1541 (PSMC3 IHC Kit).



Immunohistochemical analysis of paraffin-embedded mouse kidney tissue slide using KHC1541 (PSMC3 IHC Kit).