

IHC*easy* SUPT7L Ready-To-Use IHC Kit

Catalog Number: **KHC1485**

General Information

Sample type:
FFPE tissue
Cited sample type:
Reactivity:
Human, Mouse, Rat
Cited Reactivity:

Assay type:
Immunohistochemistry
Primary antibody type:
Rabbit Polyclonal
Secondary antibody type:
Polymer-HRP-Goat anti-Rabbit

Kit Component

Component	Size	Concentration
Antigen Retrieval Buffer	100 mL	50×
Washing Buffer	100 mL ×2	20×
Blocking Buffer	5 mL	RTU
Primary Antibody	5 mL	RTU
Secondary Antibody	5 mL	RTU
Chromogen Component A	0.2 mL	RTU
Chromogen Component B	4 mL	RTU
Signal Enhancer	5 mL	RTU
Counter Staining Reagent	5 mL	RTU
Mounting Media	5 mL	RTU
Control Slide	1 slide (Optional)	FFPE
Datasheet	1 Copy	
Manual	1 Copy	

Storage Instructions

All the reagents are stored at 2-8°C. The kit is stable for 6 months from the date of receipt.

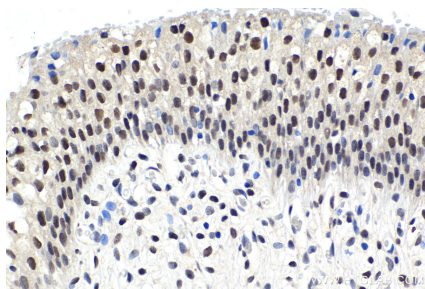
Background

SUPT7L, also named as KIAA0764, STAF65gamma, is a component of the STAGA transcription coactivator-HAT complex.

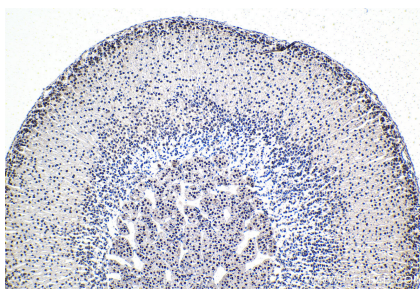
Synonyms

Adenocarcinoma antigen ART1, ART1, KIAA0764, SPT7L, STAF65, STAF65(gamma), STAF65gamma, STAGA complex 65 subunit gamma, Suppressor of Ty 7 like, SUPT7L

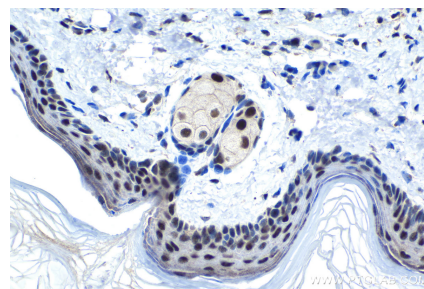
Selected Validation Data



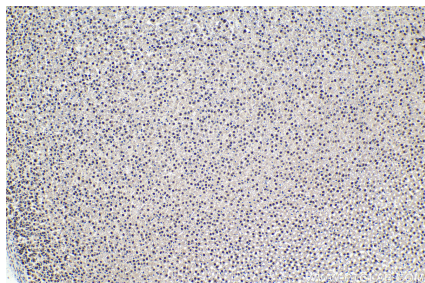
Immunohistochemical analysis of paraffin-embedded human urothelial carcinoma tissue slide using KHC1485 (SUPT7L IHC Kit).



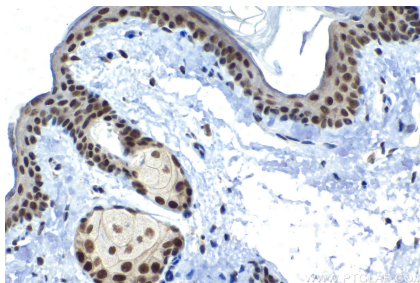
Immunohistochemical analysis of paraffin-embedded mouse adrenal gland tissue slide using KHC1485 (SUPT7L IHC Kit).



Immunohistochemical analysis of paraffin-embedded mouse skin tissue slide using KHC1485 (SUPT7L IHC Kit).



Immunohistochemical analysis of paraffin-embedded rat adrenal gland tissue slide using KHC1485 (SUPT7L IHC Kit).



Immunohistochemical analysis of paraffin-embedded rat skin tissue slide using KHC1485 (SUPT7L IHC Kit).