

IHC*easy* MICAL2 Ready-To-Use IHC Kit

Catalog Number: **KHC1484**

General Information

Sample type:
FFPE tissue
Cited sample type:
Reactivity:
Human, Mouse, Rat
Cited Reactivity:

Assay type:
Immunohistochemistry
Primary antibody type:
Rabbit Polyclonal
Secondary antibody type:
Polymer-HRP-Goat anti-Rabbit

Kit Component

Component	Size	Concentration
Antigen Retrieval Buffer	100 mL	50×
Washing Buffer	100 mL ×2	20×
Blocking Buffer	5 mL	RTU
Primary Antibody	5 mL	RTU
Secondary Antibody	5 mL	RTU
Chromogen Component A	0.2 mL	RTU
Chromogen Component B	4 mL	RTU
Signal Enhancer	5 mL	RTU
Counter Staining Reagent	5 mL	RTU
Mounting Media	5 mL	RTU
Control Slide	1 slide (Optional)	FFPE
Datasheet	1 Copy	
Manual	1 Copy	

Storage Instructions

All the reagents are stored at 2-8°C. The kit is stable for 6 months from the date of receipt.

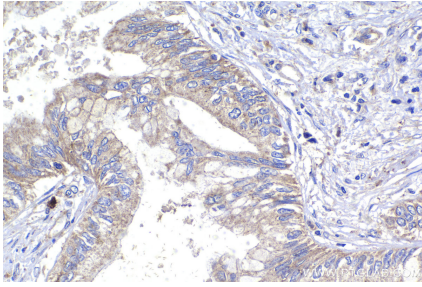
Background

MICALs (Molecules Interacting with CasL) are atypical multidomain flavoenzymes with diverse cellular functions. There are three known isoforms, MICAL1, MICAL2, and MICAL3, as well as the MICAL-like proteins MICAL-L1 and MICAL-L2. MICAL2 has three conserved domains: an N-terminal flavin adenine dinucleotide (FAD) binding domain, a calponin homology (CH) domain, and a Lin11, Isl-1, and Mec-3 (LIM) domain. It has been demonstrated that MICAL2 could regulate actin stress fibers and is required for normal actin organization. In addition, MICAL2-PV, a novel splicing variant of MICAL2, has been reported to be involved in cancer progression of prostate cancer. The primary antibody in this kit can recognize both MICAL2 and MICAL2-PV.

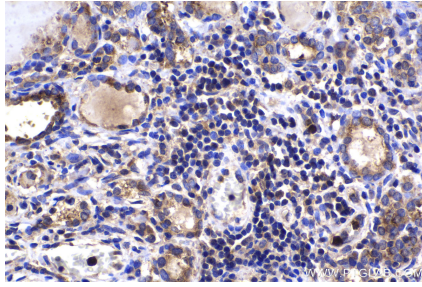
Synonyms

KIAA0750, MICAL2, MICAL2PV1, MICAL2PV2, Protein MICAL 2

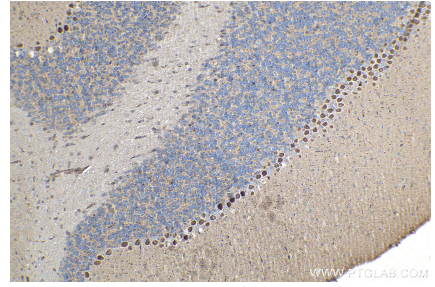
Selected Validation Data



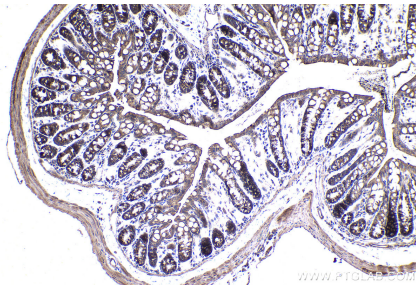
Immunohistochemical analysis of paraffin-embedded human pancreas cancer tissue slide using KHC1484 (MICAL2 IHC Kit).



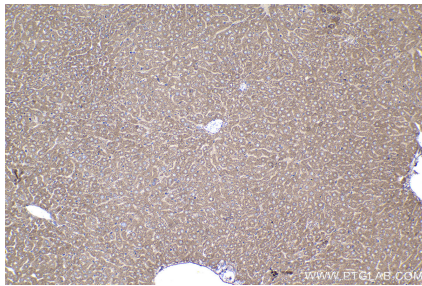
Immunohistochemical analysis of paraffin-embedded human thyroid cancer tissue slide using KHC1484 (MICAL2 IHC Kit).



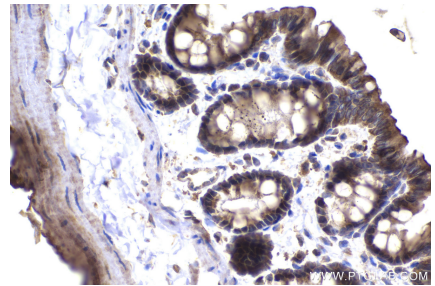
Immunohistochemical analysis of paraffin-embedded mouse cerebellum tissue slide using KHC1484 (MICAL2 IHC Kit).



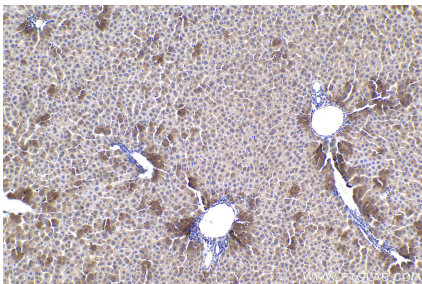
Immunohistochemical analysis of paraffin-embedded mouse colon tissue slide using KHC1484 (MICAL2 IHC Kit).



Immunohistochemical analysis of paraffin-embedded mouse liver tissue slide using KHC1484 (MICAL2 IHC Kit).



Immunohistochemical analysis of paraffin-embedded rat colon tissue slide using KHC1484 (MICAL2 IHC Kit).



Immunohistochemical analysis of paraffin-embedded rat liver tissue slide using KHC1484 (MICAL2 IHC Kit).