

# IHC*easy* ZMPSTE24 Ready-To-Use IHC Kit

Catalog Number: **KHC1478**

## General Information

**Sample type:**  
FFPE tissue

**Cited sample type:**

**Reactivity:**  
Human, Mouse, Rat

**Cited Reactivity:**

**Assay type:**  
Immunohistochemistry

**Primary antibody type:**  
Rabbit Polyclonal

**Secondary antibody type:**  
Polymer-HRP-Goat anti-Rabbit

## Kit Component

Component	Size	Concentration
Antigen Retrieval Buffer	100 mL	50×
Washing Buffer	100 mL ×2	20×
Blocking Buffer	5 mL	RTU
Primary Antibody	5 mL	RTU
Secondary Antibody	5 mL	RTU
Chromogen Component A	0.2 mL	RTU
Chromogen Component B	4 mL	RTU
Signal Enhancer	5 mL	RTU
Counter Staining Reagent	5 mL	RTU
Mounting Media	5 mL	RTU
Control Slide	1 slide (Optional)	FFPE
Datasheet	1 Copy	
Manual	1 Copy	

## Storage Instructions

All the reagents are stored at 2-8°C. The kit is stable for 6 months from the date of receipt.

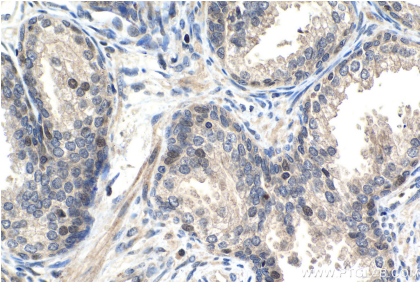
## Background

ZMPSTE24(CAAX prenyl protease 1 homolog) gene encodes a zinc metalloproteinase involved in the processing of farnesylated proteins. The significance of ZMPSTE24 in human disease stems from its role as an enzyme necessary for the correct processing and maturation of lamin A, an intermediate filament component of the nuclear envelope.

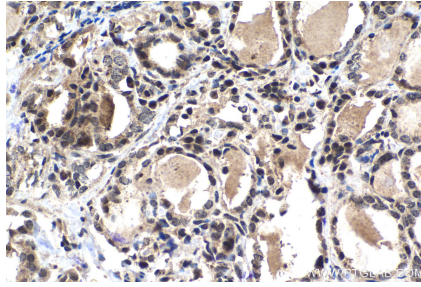
## Synonyms

CAAX prenyl protease 1 homolog, FACE 1, FACE1, STE24, Ste24p, ZMPSTE24

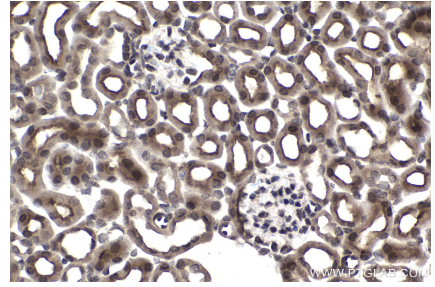
## Selected Validation Data



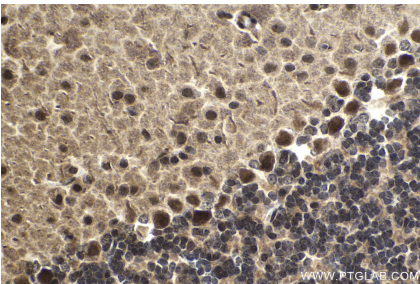
Immunohistochemical analysis of paraffin-embedded human prostate cancer tissue slide using KHC1478 (ZMPSTE24 IHC Kit).



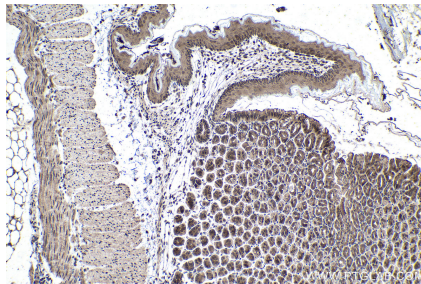
Immunohistochemical analysis of paraffin-embedded human thyroid cancer tissue slide using KHC1478 (ZMPSTE24 IHC Kit).



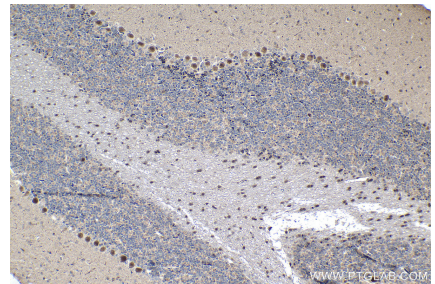
Immunohistochemical analysis of paraffin-embedded mouse kidney tissue slide using KHC1478 (ZMPSTE24 IHC Kit).



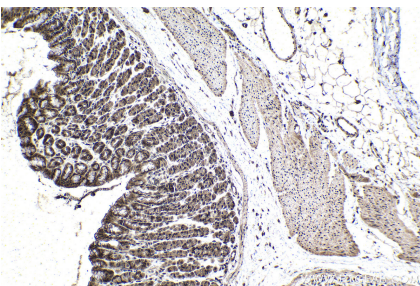
Immunohistochemical analysis of paraffin-embedded mouse cerebellum tissue slide using KHC1478 (ZMPSTE24 IHC Kit).



Immunohistochemical analysis of paraffin-embedded mouse stomach tissue slide using KHC1478 (ZMPSTE24 IHC Kit).



Immunohistochemical analysis of paraffin-embedded rat cerebellum tissue slide using KHC1478 (ZMPSTE24 IHC Kit).



Immunohistochemical analysis of paraffin-embedded rat stomach tissue slide using KHC1478 (ZMPSTE24 IHC Kit).