

# IHC*easy* SRSF10 Ready-To-Use IHC Kit

Catalog Number: **KHC1475**

## General Information

Sample type:  
FFPE tissue  
Cited sample type:  
Reactivity:  
Human, Mouse, Rat  
Cited Reactivity:

Assay type:  
Immunohistochemistry  
Primary antibody type:  
Rabbit Polyclonal  
Secondary antibody type:  
Polymer-HRP-Goat anti-Rabbit

## Kit Component

Component	Size	Concentration
Antigen Retrieval Buffer	100 mL	50×
Washing Buffer	100 mL ×2	20×
Blocking Buffer	5 mL	RTU
Primary Antibody	5 mL	RTU
Secondary Antibody	5 mL	RTU
Chromogen Component A	0.2 mL	RTU
Chromogen Component B	4 mL	RTU
Signal Enhancer	5 mL	RTU
Counter Staining Reagent	5 mL	RTU
Mounting Media	5 mL	RTU
Control Slide	1 slide (Optional)	FFPE
Datasheet	1 Copy	
Manual	1 Copy	

## Storage Instructions

All the reagents are stored at 2-8°C. The kit is stable for 6 months from the date of receipt.

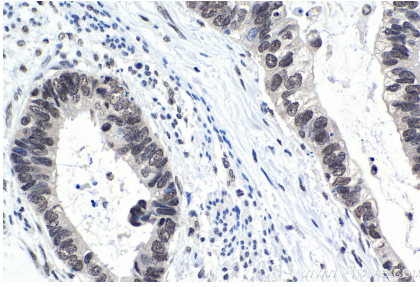
## Background

FUSIP1, also named as SRSF10, SRp40, SRp38, FUSIP2, SFRS13A, or TASR, is a 262 amino acid protein, which belongs to the splicing factor SR family. FUSIP1 as a Splicing factor that in its dephosphorylated form acts as a general repressor of pre-mRNA splicing. FUSIP1 is required for splicing repression in M-phase cells and after heat shock and also acts as a splicing factor that specifically promotes exon skipping during alternative splicing. FUSIP1 Interacting with YTHDC1, a RNA-binding protein that recognizes and binds N6-methyladenosine (m6A)-containing RNAs, prevents SRSF10 from binding to its mRNA-binding sites close to m6A-containing regions, leading to inhibit exon skipping during alternative splicing.

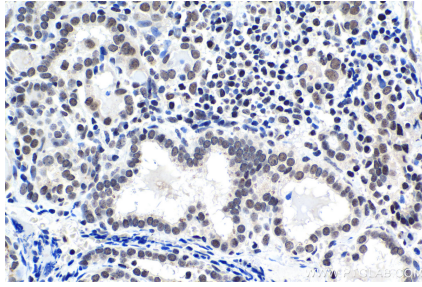
## Synonyms

40 kDa SR repressor protein, FUSIP1, FUSIP2, NSSR, SFRS13, SFRS13A, Splicing factor SRp38, SRp38, SRp40, SRSF10, TASR, TASR1, TASR2, TLS associated SR protein

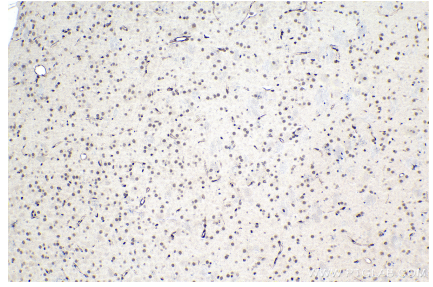
## Selected Validation Data



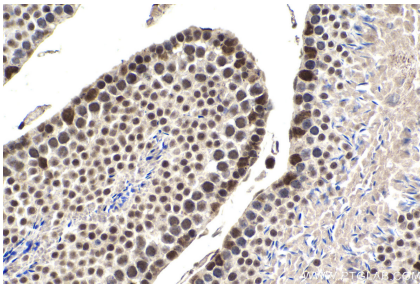
Immunohistochemical analysis of paraffin-embedded human urothelial carcinoma tissue slide using KHC1475 (SRSF10 IHC Kit).



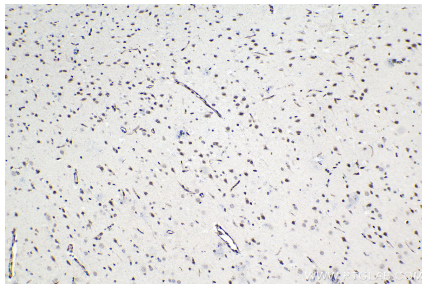
Immunohistochemical analysis of paraffin-embedded human thyroid cancer tissue slide using KHC1475 (SRSF10 IHC Kit).



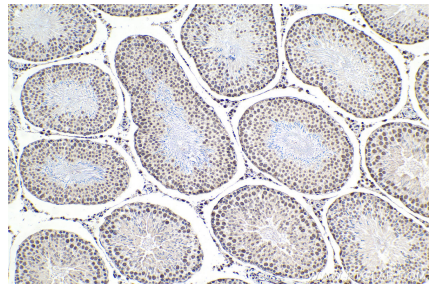
Immunohistochemical analysis of paraffin-embedded mouse brain tissue slide using KHC1475 (SRSF10 IHC Kit).



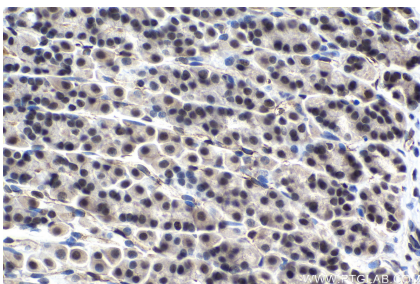
Immunohistochemical analysis of paraffin-embedded mouse testis tissue slide using KHC1475 (SRSF10 IHC Kit).



Immunohistochemical analysis of paraffin-embedded rat brain tissue slide using KHC1475 (SRSF10 IHC Kit).



Immunohistochemical analysis of paraffin-embedded rat testis tissue slide using KHC1475 (SRSF10 IHC Kit).



Immunohistochemical analysis of paraffin-embedded rat stomach tissue slide using KHC1475 (SRSF10 IHC Kit).