

IHC*easy* ZFP161 Ready-To-Use IHC Kit

Catalog Number: **KHC1457**

General Information

Sample type:
FFPE tissue
Cited sample type:
Reactivity:
Human, Mouse, Rat
Cited Reactivity:

Assay type:
Immunohistochemistry
Primary antibody type:
Rabbit Polyclonal
Secondary antibody type:
Polymer-HRP-Goat anti-Rabbit

Kit Component

Component	Size	Concentration
Antigen Retrieval Buffer	100 mL	50×
Washing Buffer	100 mL ×2	20×
Blocking Buffer	5 mL	RTU
Primary Antibody	5 mL	RTU
Secondary Antibody	5 mL	RTU
Chromogen Component A	0.2 mL	RTU
Chromogen Component B	4 mL	RTU
Signal Enhancer	5 mL	RTU
Counter Staining Reagent	5 mL	RTU
Mounting Media	5 mL	RTU
Control Slide	1 slide (Optional)	FFPE
Datasheet	1 Copy	
Manual	1 Copy	

Storage Instructions

All the reagents are stored at 2-8°C. The kit is stable for 6 months from the date of receipt.

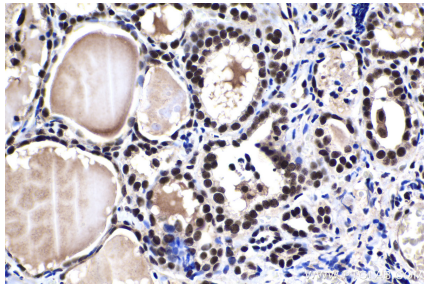
Background

ZBTB14, also named as :ZFP161, ZNF478, is a 449 amino acid protein, which interacts with ZBTB21. ZBTB14, is a transcriptional activator of the dopamine transporter (DAT), binding it's promoter at the consensus sequence 5'-CCTGCACAGTTCACGA-3'. ZBTB14 Binds to 5'-d(GCC)(n)-3' trinucleotide repeats in promoter regions and acts as a repressor of the FMR1 gene.

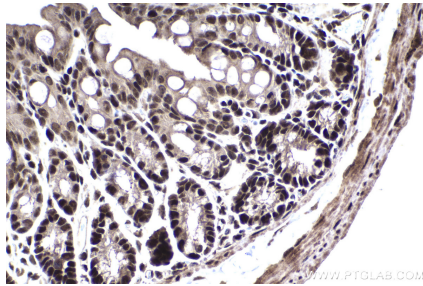
Synonyms

hZF5, ZBTB14, ZF5, Zfp 161, Zfp 5, ZFP161, Zinc finger protein 5 homolog, ZNF478

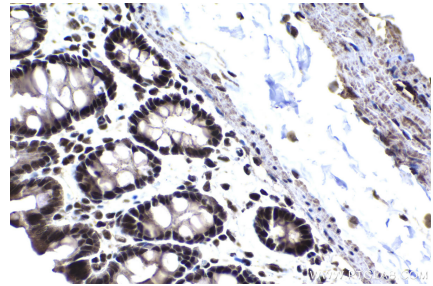
Selected Validation Data



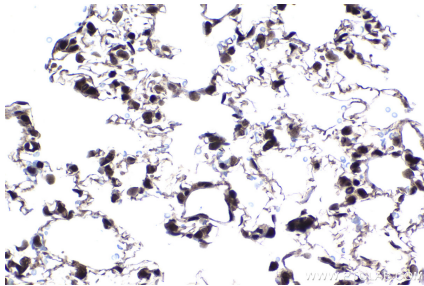
Immunohistochemical analysis of paraffin-embedded human thyroid cancer tissue slide using KHC1457 (ZFP161 IHC Kit).



Immunohistochemical analysis of paraffin-embedded mouse colon tissue slide using KHC1457 (ZFP161 IHC Kit).



Immunohistochemical analysis of paraffin-embedded rat colon tissue slide using KHC1457 (ZFP161 IHC Kit).



Immunohistochemical analysis of paraffin-embedded rat lung tissue slide using KHC1457 (ZFP161 IHC Kit).