

IHC*easy* INPPL1 Ready-To-Use IHC Kit

Catalog Number: **KHC1444**

General Information

Sample type:
FFPE tissue

Cited sample type:

Reactivity:
Human, Mouse, Rat

Cited Reactivity:

Assay type:
Immunohistochemistry

Primary antibody type:
Rabbit Polyclonal

Secondary antibody type:
Polymer-HRP-Goat anti-Rabbit

Kit Component

Component	Size	Concentration
Antigen Retrieval Buffer	100 mL	50×
Washing Buffer	100 mL ×2	20×
Blocking Buffer	5 mL	RTU
Primary Antibody	5 mL	RTU
Secondary Antibody	5 mL	RTU
Chromogen Component A	0.2 mL	RTU
Chromogen Component B	4 mL	RTU
Signal Enhancer	5 mL	RTU
Counter Staining Reagent	5 mL	RTU
Mounting Media	5 mL	RTU
Control Slide	1 slide (Optional)	FFPE
Datasheet	1 Copy	
Manual	1 Copy	

Storage Instructions

All the reagents are stored at 2-8°C. The kit is stable for 6 months from the date of receipt.

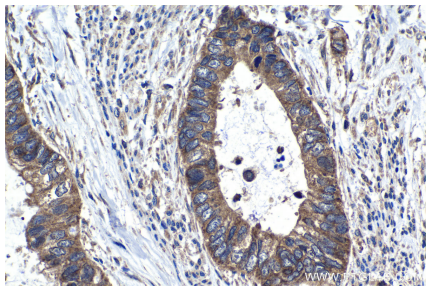
Background

Inositol polyphosphate phosphatase-like protein 1 (INPPL1) belongs to the inositol and phosphatidylinositol 5-phosphatase family, also known as SH2 domain-containing inositol 5'-phosphatase 2 (SHIP2), is ubiquitous in all organizations. SHIP2 is constitutively tyrosine-phosphorylated in chronic myeloid leukemia progenitor cells. In B cells, SHIP2 was most tyrosine phosphorylated after BCR and FC- γ riib crosslinking and was associated with Shc, but not after BCR stimulation alone. It has also been shown that SHIP2 can be phosphorylated at Tyr-986 in COS-7 cells and Chinese hamster ovary cells overexpressing the insulin receptor.

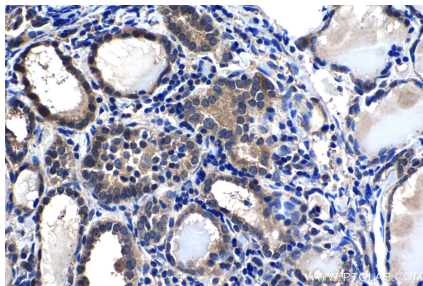
Synonyms

INPPL 1, INPPL1, Protein 51C, SHIP 2, SHIP2

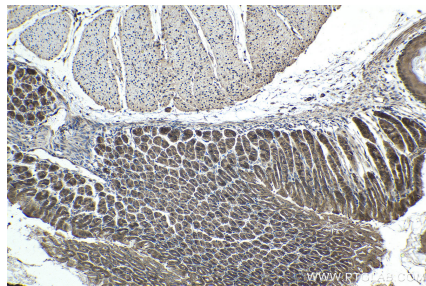
Selected Validation Data



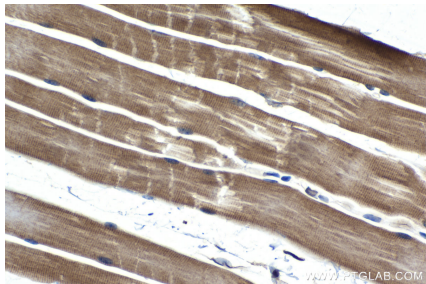
Immunohistochemical analysis of paraffin-embedded human urothelial carcinoma tissue slide using KHC1444 (INPPL1 IHC Kit).



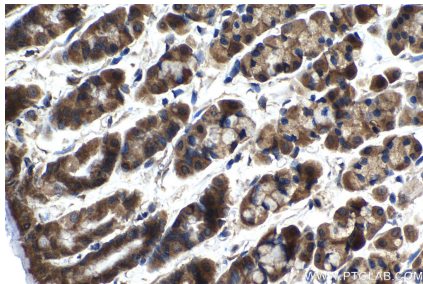
Immunohistochemical analysis of paraffin-embedded human thyroid cancer tissue slide using KHC1444 (INPPL1 IHC Kit).



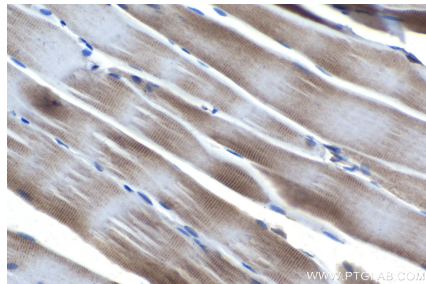
Immunohistochemical analysis of paraffin-embedded mouse stomach tissue slide using KHC1444 (INPPL1 IHC Kit).



Immunohistochemical analysis of paraffin-embedded mouse skeletal muscle tissue slide using KHC1444 (INPPL1 IHC Kit).



Immunohistochemical analysis of paraffin-embedded rat stomach tissue slide using KHC1444 (INPPL1 IHC Kit).



Immunohistochemical analysis of paraffin-embedded rat skeletal muscle tissue slide using KHC1444 (INPPL1 IHC Kit).