

IHC*easy* CNOT1 Ready-To-Use IHC Kit

Catalog Number: **KHC1415**

General Information

Sample type:
FFPE tissue
Cited sample type:
Reactivity:
Human, Mouse, Rat
Cited Reactivity:

Assay type:
Immunohistochemistry
Primary antibody type:
Mouse Monoclonal
Secondary antibody type:
Polymer-HRP-Goat anti-Mouse

Kit Component

Component	Size	Concentration
Antigen Retrieval Buffer	100 mL	50×
Washing Buffer	100 mL ×2	20×
Blocking Buffer	5 mL	RTU
Primary Antibody	5 mL	RTU
Secondary Antibody	5 mL	RTU
Chromogen Component A	0.2 mL	RTU
Chromogen Component B	4 mL	RTU
Signal Enhancer	5 mL	RTU
Counter Staining Reagent	5 mL	RTU
Mounting Media	5 mL	RTU
Control Slide	1 slide (Optional)	FFPE
Datasheet	1 Copy	
Manual	1 Copy	

Storage Instructions

All the reagents are stored at 2-8°C. The kit is stable for 6 months from the date of receipt.

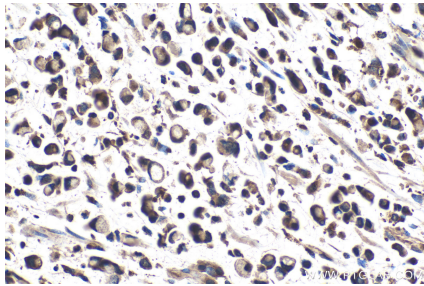
Background

CNOT1 is a component of CCR4-NOT protein complex, which is a regulator of RNA polymerase II transcription, acts as a transcription repressor. CCR4-NOT complex could participate in transcription as well as mRNA degradation. It's highly expressed in brain, heart, thymus, but weak in skeletal muscle and colon. CNOT1 undergoes alternative splicing to produce four isoforms.

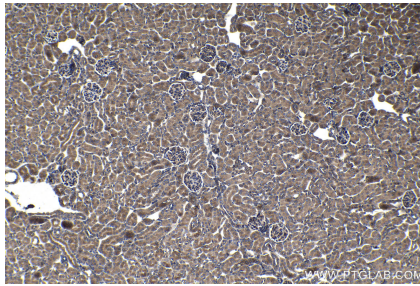
Synonyms

AD 005, CCR4 associated factor 1, CDC39, CNOT1, hNOT1, KIAA1007, NOT1, NOT1H

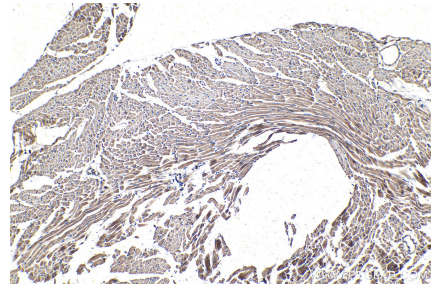
Selected Validation Data



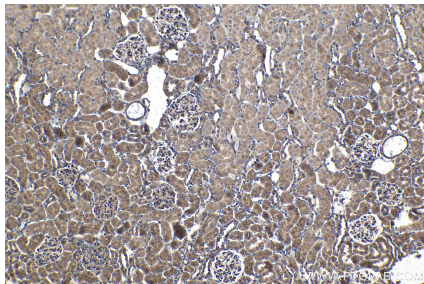
Immunohistochemical analysis of paraffin-embedded human stomach cancer tissue slide using KHC1415 (CNOT1 IHC Kit).



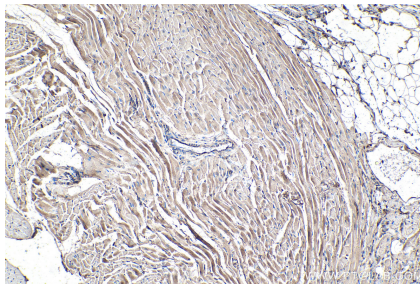
Immunohistochemical analysis of paraffin-embedded mouse kidney tissue slide using KHC1415 (CNOT1 IHC Kit).



Immunohistochemical analysis of paraffin-embedded mouse heart tissue slide using KHC1415 (CNOT1 IHC Kit).



Immunohistochemical analysis of paraffin-embedded rat kidney tissue slide using KHC1415 (CNOT1 IHC Kit).



Immunohistochemical analysis of paraffin-embedded rat heart tissue slide using KHC1415 (CNOT1 IHC Kit).