

IHC*easy* CD68 Ready-To-Use IHC Kit

Catalog Number: **KHC1414**

General Information

Sample type:
FFPE tissue
Cited sample type:
Reactivity:
Mouse, Rat
Cited Reactivity:

Assay type:
Immunohistochemistry
Primary antibody type:
Rabbit Polyclonal
Secondary antibody type:
Polymer-HRP-Goat anti-Rabbit

Kit Component

Component	Size	Concentration
Antigen Retrieval Buffer	100 mL	50×
Washing Buffer	100 mL ×2	20×
Blocking Buffer	5 mL	RTU
Primary Antibody	5 mL	RTU
Secondary Antibody	5 mL	RTU
Chromogen Component A	0.2 mL	RTU
Chromogen Component B	4 mL	RTU
Signal Enhancer	5 mL	RTU
Counter Staining Reagent	5 mL	RTU
Mounting Media	5 mL	RTU
Control Slide	1 slide (Optional)	FFPE
Datasheet	1 Copy	
Manual	1 Copy	

Storage Instructions

All the reagents are stored at 2-8°C. The kit is stable for 6 months from the date of receipt.

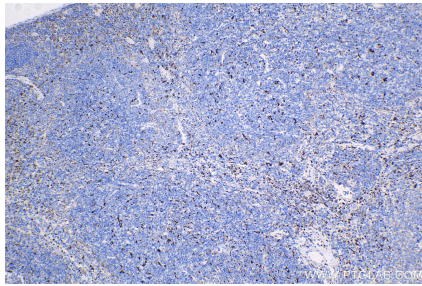
Background

Mouse CD68 (also known as macrosialin) is a type I transmembrane glycoprotein that is highly and specifically expressed by mouse tissue macrophages, and to a lesser extent by dendritic cells. It belongs to the lysosomal/endosomal-associated membrane glycoprotein (LAMP) family and primarily localizes to lysosomes and endosomes with a smaller fraction circulating to the cell surface. CD68 is also a member of the scavenger receptor family. It may play a role in phagocytic activities of tissue macrophages.

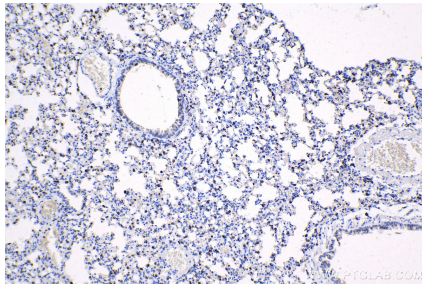
Synonyms

Cd68, CD68 antigen, gp110, Scard1

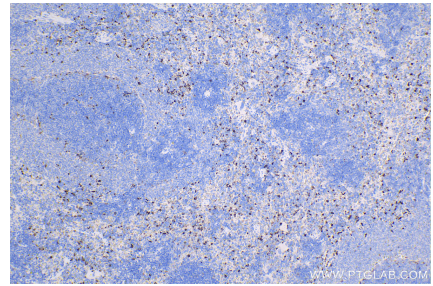
Selected Validation Data



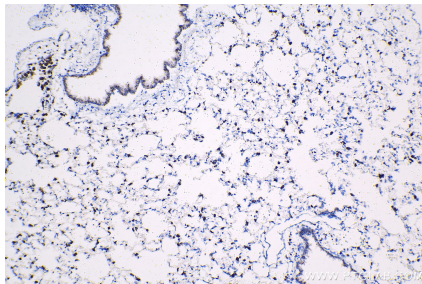
Immunohistochemical analysis of paraffin-embedded mouse spleen tissue slide using KHC1414 (CD68 IHC Kit).



Immunohistochemical analysis of paraffin-embedded mouse lung tissue slide using KHC1414 (CD68 IHC Kit).



Immunohistochemical analysis of paraffin-embedded rat spleen tissue slide using KHC1414 (CD68 IHC Kit).



Immunohistochemical analysis of paraffin-embedded rat lung tissue slide using KHC1414 (CD68 IHC Kit).