

# IHC*easy* RPS4X Ready-To-Use IHC Kit

Catalog Number: **KHC1409**

## General Information

**Sample type:**  
FFPE tissue

**Cited sample type:**

**Reactivity:**  
Human, Mouse, Rat

**Cited Reactivity:**

**Assay type:**  
Immunohistochemistry

**Primary antibody type:**  
Rabbit Polyclonal

**Secondary antibody type:**  
Polymer-HRP-Goat anti-Rabbit

## Kit Component

Component	Size	Concentration
Antigen Retrieval Buffer	100 mL	50×
Washing Buffer	100 mL ×2	20×
Blocking Buffer	5 mL	RTU
Primary Antibody	5 mL	RTU
Secondary Antibody	5 mL	RTU
Chromogen Component A	0.2 mL	RTU
Chromogen Component B	4 mL	RTU
Signal Enhancer	5 mL	RTU
Counter Staining Reagent	5 mL	RTU
Mounting Media	5 mL	RTU
Control Slide	1 slide (Optional)	FFPE
Datasheet	1 Copy	
Manual	1 Copy	

## Storage Instructions

All the reagents are stored at 2-8°C. The kit is stable for 6 months from the date of receipt.

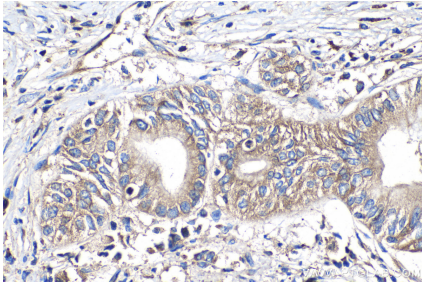
## Background

RPS4X, a X-linked gene in the human, encodes a subunit of ribosomal protein S4, a component of the 40S subunit and 60S subunit. Ribosomal protein S4 is the only ribosomal protein known to be encoded by more than one gene, namely this gene, RPS4Y2 and the ribosomal protein S4, X-linked (RPS4X).

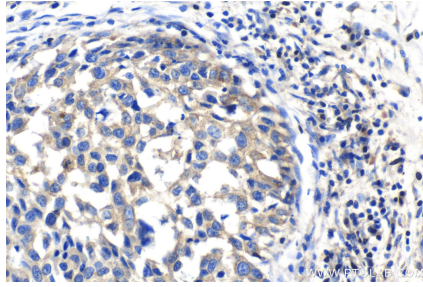
## Synonyms

CCG2, DXS306, ribosomal protein S4, X linked, RPS4, RPS4X, SCAR, SCR10

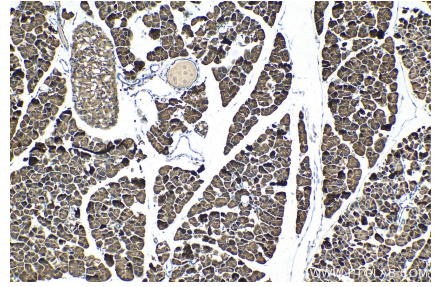
## Selected Validation Data



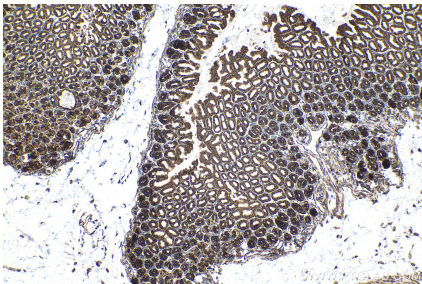
Immunohistochemical analysis of paraffin-embedded human pancreas cancer tissue slide using KHC1409 (RPS4X IHC Kit).



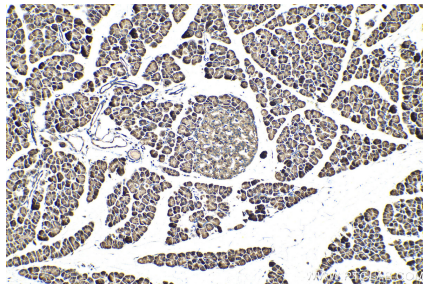
Immunohistochemical analysis of paraffin-embedded human breast cancer tissue slide using KHC1409 (RPS4X IHC Kit).



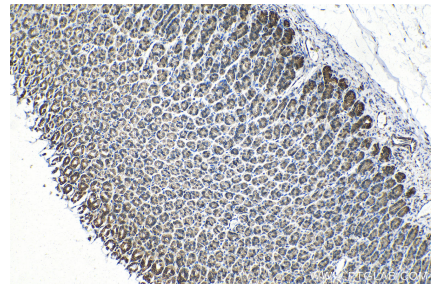
Immunohistochemical analysis of paraffin-embedded mouse pancreas tissue slide using KHC1409 (RPS4X IHC Kit).



Immunohistochemical analysis of paraffin-embedded mouse stomach tissue slide using KHC1409 (RPS4X IHC Kit).



Immunohistochemical analysis of paraffin-embedded rat pancreas tissue slide using KHC1409 (RPS4X IHC Kit).



Immunohistochemical analysis of paraffin-embedded rat stomach tissue slide using KHC1409 (RPS4X IHC Kit).