

IHCeasy[®] PSAP Ready-To-Use IHC Kit

Catalog Number: KHC1407

General Information

Sample type:
FFPE tissue
Cited sample type:
Reactivity:
Human, Mouse, Rat
Cited Reactivity:

Assay type:
Immunohistochemistry
Primary antibody type:
Rabbit Polyclonal
Secondary antibody type:
Polymer-HRP-Goat anti-Rabbit

Kit Component

Component	Size	Concentration
Antigen Retrieval Buffer	100 mL	50×
Washing Buffer	100 mL ×2	20×
Blocking Buffer	5 mL	RTU
Primary Antibody	5 mL	RTU
Secondary Antibody	5 mL	RTU
Chromogen Component A	0.2 mL	RTU
Chromogen Component B	4 mL	RTU
Signal Enhancer	5 mL	RTU
Counter Staining Reagent	5 mL	RTU
Mounting Media	5 mL	RTU
Control Slide	1 slide (Optional)	FFPE
Datasheet	1 Copy	
Manual	1 Copy	

Storage Instructions

All the reagents are stored at 2-8°C. The kit is stable for 6 months from the date of receipt.

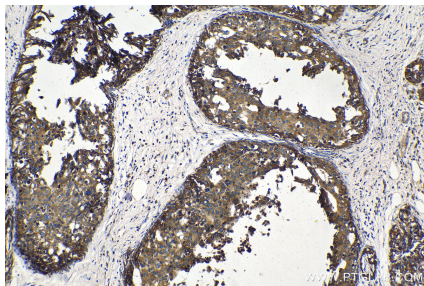
Background

The PSAP gene encodes prosaposin, a precursor of four small nonenzymatic glycoproteins termed 'sphingolipid activator proteins' (SAPs) that assist in the lysosomal hydrolysis of sphingolipids. After proteolytic processing of the prosaposin protein, these 4 released polypeptides are functional activators. Saposin A is encoded by residues 60 to 143 of PSAP, saposin B by 195 to 275, saposin C by 311 to 390, and saposin D by 405 to 487. Saposins A-D localize primarily to the lysosomal compartment where they facilitate the catabolism of glycosphingolipids with short oligosaccharide groups. Saposins A-D are required for the hydrolysis of certain sphingolipids by specific lysosomal hydrolases. Defects in PSAP are the cause of Gaucher disease, Tay-Sachs disease, and metachromatic leukodystrophy.

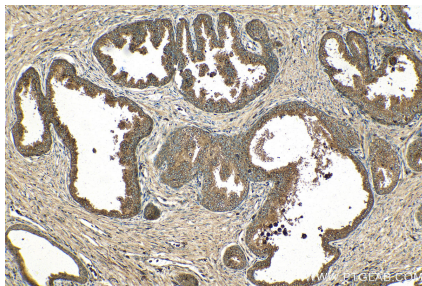
Synonyms

A1 activator, Cerebroside sulfate activator, Co beta glucosidase, Component C, CSAct, Dispersin, GLBA, Glucosylceramidase activator, Proactivator polypeptide, prosaposin, Protein C, PSAP, SAP 1, SAP 2 Saposin D, SAP1

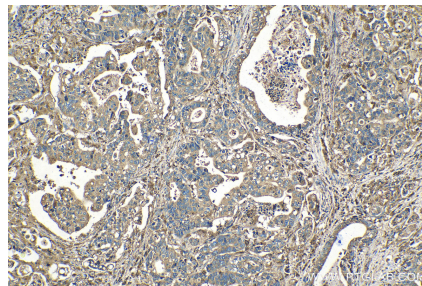
Selected Validation Data



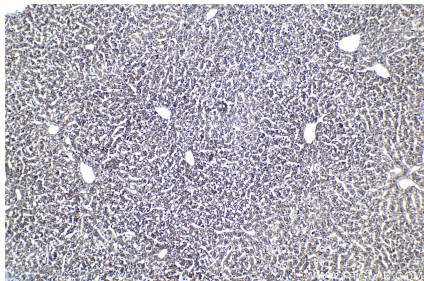
Immunohistochemical analysis of paraffin-embedded human breast cancer tissue slide using KHC1407 (PSAP IHC Kit).



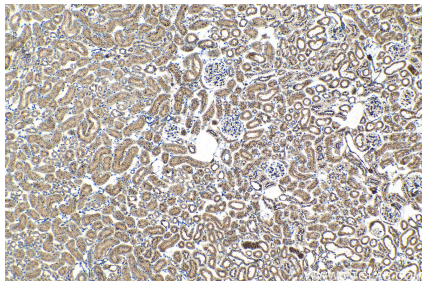
Immunohistochemical analysis of paraffin-embedded human prostate cancer tissue slide using KHC1407 (PSAP IHC Kit).



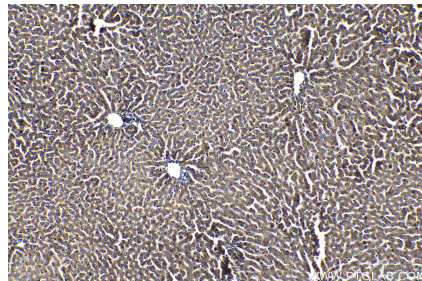
Immunohistochemical analysis of paraffin-embedded human stomach cancer tissue slide using KHC1407 (PSAP IHC Kit).



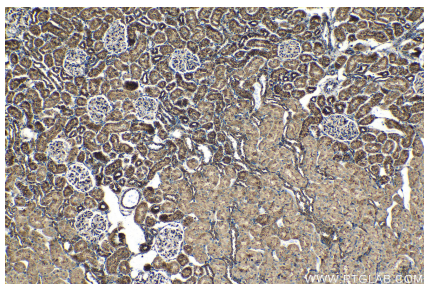
Immunohistochemical analysis of paraffin-embedded mouse liver tissue slide using KHC1407 (PSAP IHC Kit).



Immunohistochemical analysis of paraffin-embedded mouse kidney tissue slide using KHC1407 (PSAP IHC Kit).



Immunohistochemical analysis of paraffin-embedded rat liver tissue slide using KHC1407 (PSAP IHC Kit).



Immunohistochemical analysis of paraffin-embedded rat kidney tissue slide using KHC1407 (PSAP IHC Kit).